

art **DECOR**


APRIL 2023 | WALL DECOR



IMPRESIÓN BAJO DEMANDA:

Todas las imágenes de este catálogo están disponibles para impresión bajo demanda. Puede adquirir cualquier imagen en canvas de hasta 220 cm o litografía.

 www.facebook.com/artgallery.mexico

 www.instagram.com/artgallerymexico/

 www.pinterest.com/artgallerymex/

 www.twitter.com/artgallerymex

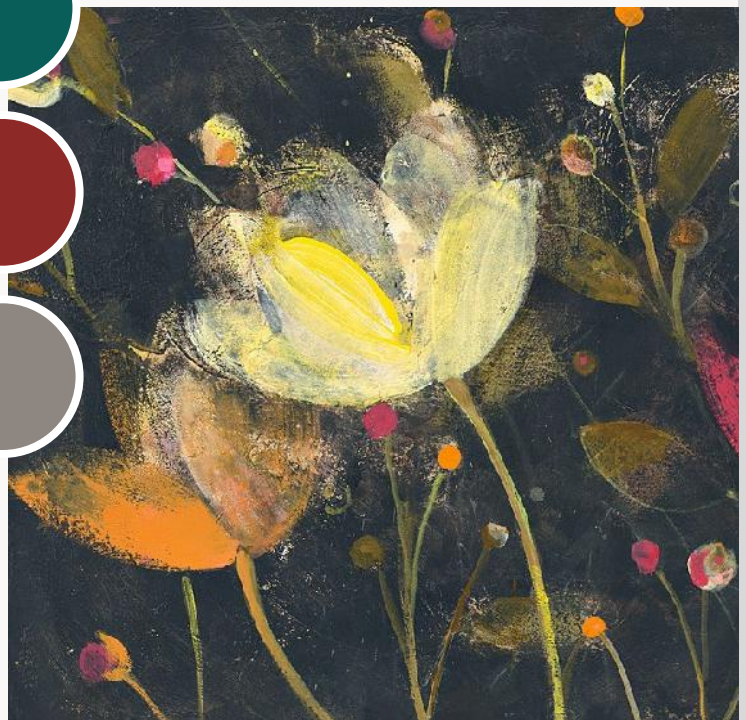






gothic garden

We simply adore this look. Our dark gothic floral art combines the delicate beauty of flowers with bold, contrasting colors and painterly techniques on dark backgrounds to add drama and intrigue to any room.



- 83842 MIDNIGHT BOUQUET I
- 81275 FLORAL ON BLACK II
- 79302 BRIGHTNESS FLOWERING
- 30233 MOONLIGHT GARDEN II

A



B



A: 81280 FLEETING BLOOMS I | B: 81282 FLEETING BLOOMS III
 C: 81281 FLEETING BLOOMS II | D: 83842 MIDNIGHT BOUQUET I
 E: 83843 MIDNIGHT BOUQUET II
 JULIA PURINTON



D



E

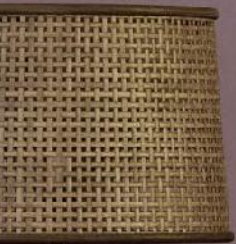


C





84116 SPRING BEAUTY
JULIA PURINTON





JMP

A



B





D



A: 84147 BLOOMING JOY I

B: 84148 BLOOMING JOY II

DANHUI NAI

C: 83519 FLOWER IMPRESSION I

D: 83520 FLOWER IMPRESSION II

PAMELA MUNGER

wild & free

Art that captures the beauty and majesty of animals in the wild, the natural world and its magnificent creatures. From horses in open fields to birds soaring across vast skies, these works of art capture the grace, power, and wonder of the animal kingdom.

A: 83664 BW
B: 80636 EAGLE PERCH BW
NATHAN LARSON



B



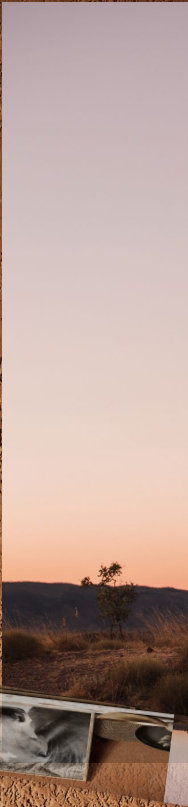


ild is a celebration of
galloping through
art showcase the

A

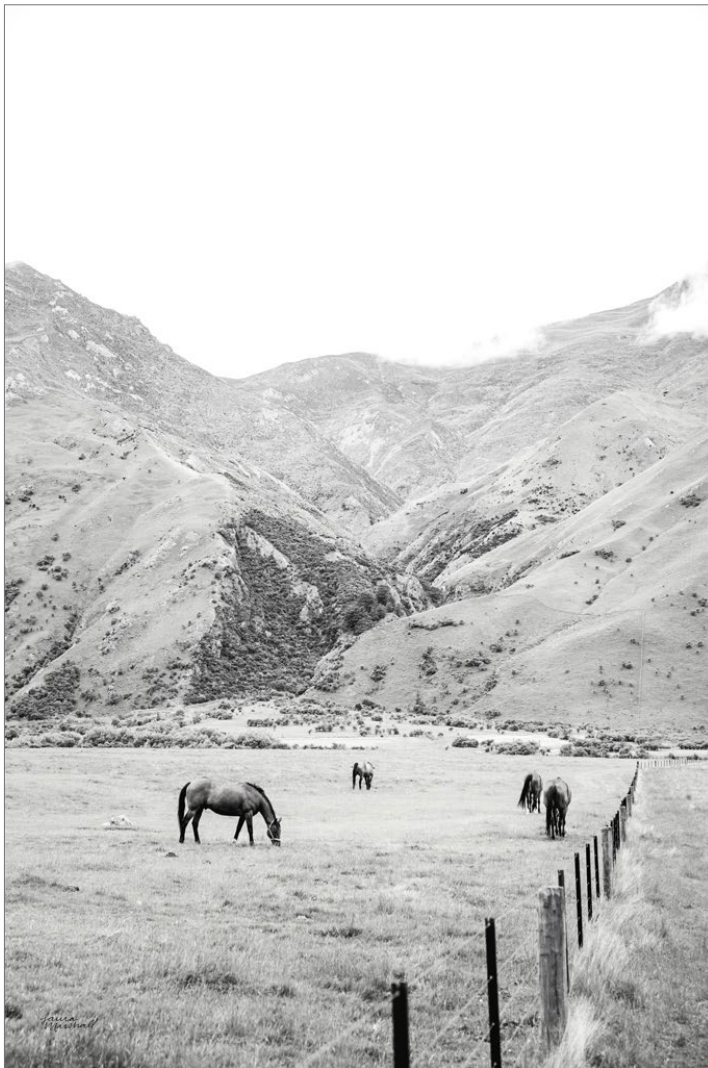


A





B



A: 84129 MOKE LAKE HORSES I
B: 84133 MOKE LAKE HORSES V
LAURA MARSHALL

A





B

C



A: 83661 HORSE MOVES
NATHAN LARSON

B: 83091 TRANQUIL LANDSCAPE
SILVIA VASSILEVA

C: 84086 NORTHERN MOOSE
WELLINGTON STUDIO



B





A: 84115 FLOCK
B: 84114 FIELD VIEW
JULIA PURINTON



A



C

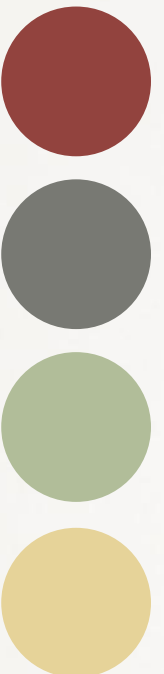




farm folk

Trendy folk art and the farmhouse aesthetic are a match made in home decor heaven. We love how folk art style collections combine simple yet elegant patterns and techniques with slightly bolder color palettes to brighten up the farm house look.

A: 83992 PATCHWORK CHICKENS I | B: 84002 PATCHWORK CHICKENS III
 C: 84003 PATCHWORK CHICKENS IV | D: 83993 PATCHWORK CHICKENS II
 COURTNEY PRAHL





A: 84081 FOLK COTTAGE I | B: 84082 FOLK COTTAGE II | C: 84083 FOLK COTTAGE III | D: 84084 FOLK COTTAGE IV
COURTNEY PRAHL



84134 COTTAGE WILDFLOWERS I
KATRINA PETE



84135 COTTAGE WILDFLOWERS II
KATRINA PETE



84136 COTTAGE WILDFLOWERS III
KATRINA PETE



84137 COTTAGE WILDFLOWERS IV
KATRINA PETE

A



B



wild wings

Wall decor is taking flight this season. You guessed it, butterflies and birds are emerging as a trend for the home. These winged beauties are associated with grace and freedom, making them a natural subject for creators of all types. They bring a sense of tranquility to our spaces and to be honest, we could all use a bit more of that in our daily lives.

A: 74460 BUTTERFLY STUDY I | B: 74461 BUTTERFLY STUDY II
FARIDA ZAMAN

C: 71330 BW BUTTERFLY CHART
DEBRA VAN SWEARINGEN





A



A: 84101 SWIFTS
DANHUI NAI

B: 84228 BARN SWALLOW FLIGHT II
SUE SCHLABACH

B





A: 35978 PRETTY BIRDS NEUTRAL STRING
JULIA PURINTON

B: 84125 PIPERS
PAMELA MUNGER

B



explore more art

PAMELA MUNGER



84126 BLUE FLORALS I



84127 BLUE FLORALS II



A

B

A: 83517 TALL FERN I | B: 83518 TALL FERN II
SILVIA VASSILEVA



83489 RUSSET BOUQUET
DANHUI NAI

JEANETTE VERTENTES



83800 FLIGHT



83854 FLOURISH



83799 PERIWINKLE
JEANETTE VERTENTES



JEANETTE
VERTENTES

Jeanette Vertentes is a contemporary painter known for colorful paintings filled with vibrant spirit. Living in Connecticut, close to the sea, her vivid creations are brought to life with contrasting and harmonious colors, movement and bold compositions.

JEANETTE VERTENTES



83801 PUFFS



83853 HYDRANGEA HARMONY

JULIA PURINTON



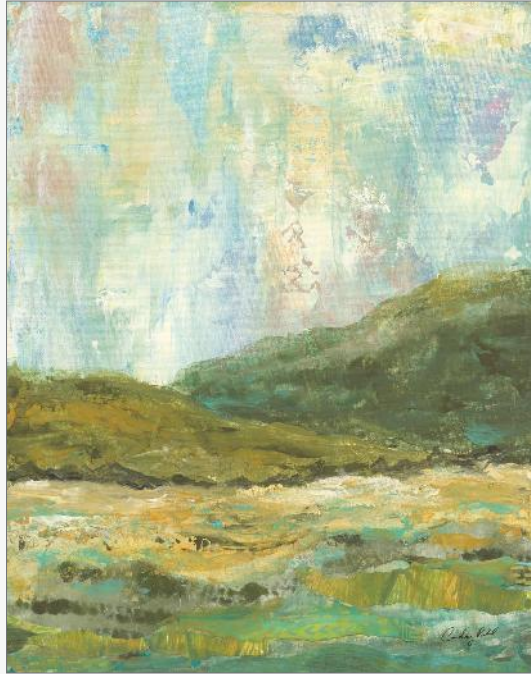
83623 FRENCH GARDEN



JULIA
PURINTON

Artist and muralist Julia Purinton divides her time between urban Washington, DC and a small rural village in Vermont. Both places provide plenty of material for her evocative landscapes and cityscapes. Working in oils, acrylics, venetian plaster and glaze, Julia's artwork has the luminous glow and vintage romance of images by artists who influence her: William Turner, John Singer Sargent and the Brandywine River School painters. Many layers of glaze create the atmospheric moods of her landscapes. Her work is found in galleries in New England.

COURTNEY PRAHL



83538 YONDER

SILVIA VASSILEVA



83095 SPRING TALE

JULIA PURINTON



81283 THE PATH OF WATER

JAMES WIENS



78136 MOODY LANDSCAPE

PAMELA MUNGER



84004 RESPLENDENT GREEN

PAMELA
MUNGER

Pamela Munger grew up in southern California and now calls rural western Colorado home. The big sky, mountains and seasons are a constant inspiration for her. "Painting is a lifeline, combining creativity, solitude and limitless possibilities. I'm all about experimentation with paint, surfaces and subject matter. I like to keep it simple, avoiding detail and not giving away the whole story."

Pamela started painting as a creative outlet for her work as an English teacher, which soon grew to a passion. She paints with acrylics, using brushes and palette knives. Pamela and her husband co-own Misty Mountain Hop Farm and she paints full time. If she isn't enjoying the outdoors, you'll find her at her easel.

ALAN MAJCHROWICZ



84029 CIRQUE OF THE TOWERS WATERFALL

ALAN MAJCHROWICZ



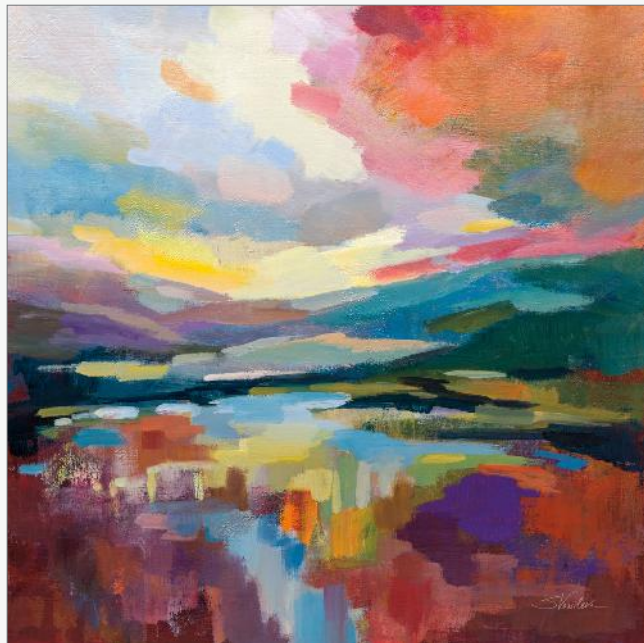
84043 TRAIN III

SUE SCHLABACH



83144 LUPINE EVENING

SILVIA VASSILEVA



83096 CRIMSON SKY

SILVIA VASSILEVA



83506 MAGENTA HILL I



83507 MAGENTA HILL II

A: 83540 CONFETTI II

B: 83539 CONFETTI I

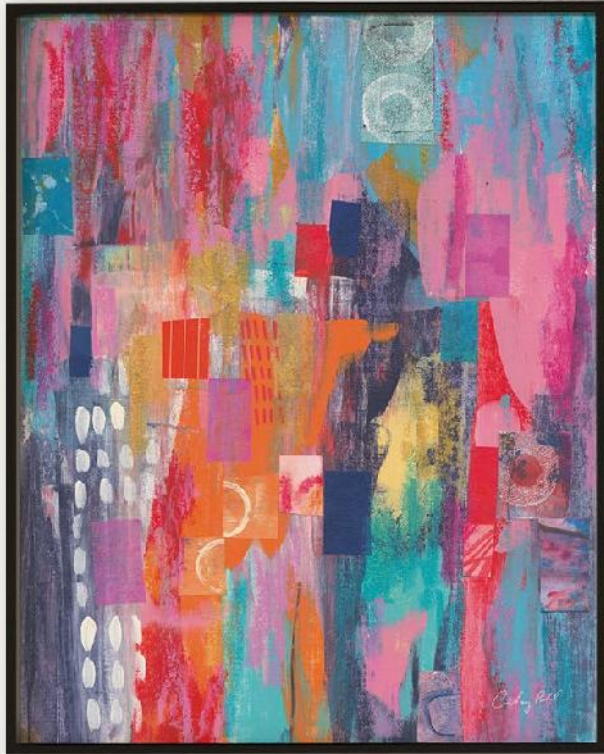
COURTNEY PRAHL



COURTNEY
PRAHL

Courtney Prahl is a mixed media collage artist who uses color and layers throughout her work. Juxtaposing old and new materials is part of her signature style, and she loves searching for vintage paper treasures at tag sales and flea markets to incorporate into her art. Courtney teaches art to children of all ages at an art center and community college, and is the co-founder of a local art charity "Lend a Hand" in her hometown. She resides in Maryland with her husband and two sons.

A



B



SILVIA VASSILEVA



83510 SPRING HUES I



83511 SPRING HUES II

SILVIA VASSILEVA



83512 STREAM



83145 CLICK BAIT



84149 GRAVITY
DANHUI NAI



DANHUI
NAI

Danhui Nai was born in mainland China and raised in an artistic household with her sculptor father and painter mother. Her natural passion for art was guided through classical training which she applies in her California studio to create beautiful, on-trend artwork in a variety of media. She studied interior design later in Paris and New York City. She worked in the textile industry in Manhattan, where she continued her studies and artistic development.

DANHUI NAI



84150 ATMOSPHERE

CHRIS PASCHKE



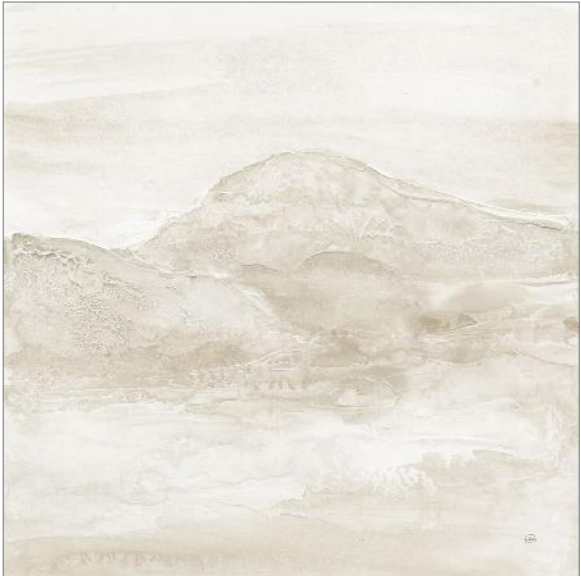
83965 HONEYBLOOM I



83966 HONEYBLOOM II

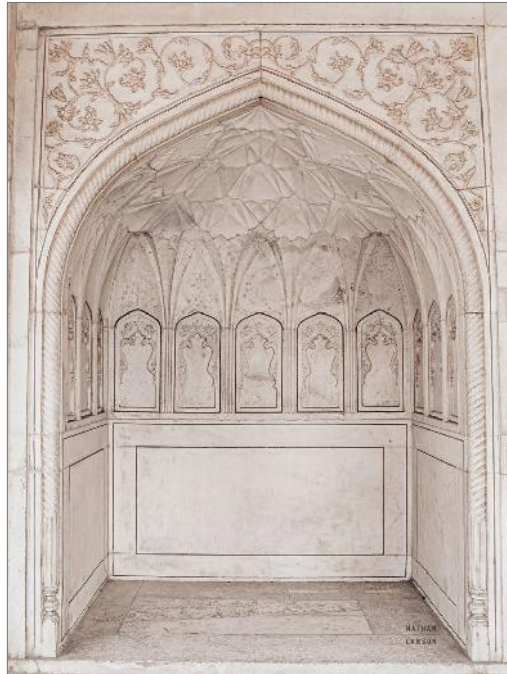


83967 HONEYBLOOM III



83968 HONEYBLOOM IV

NATHAN LARSON



81194 SET ASIDE

CHRIS PASCHKE



82278 INSTINCT I



82279 INSTINCT II

A



B

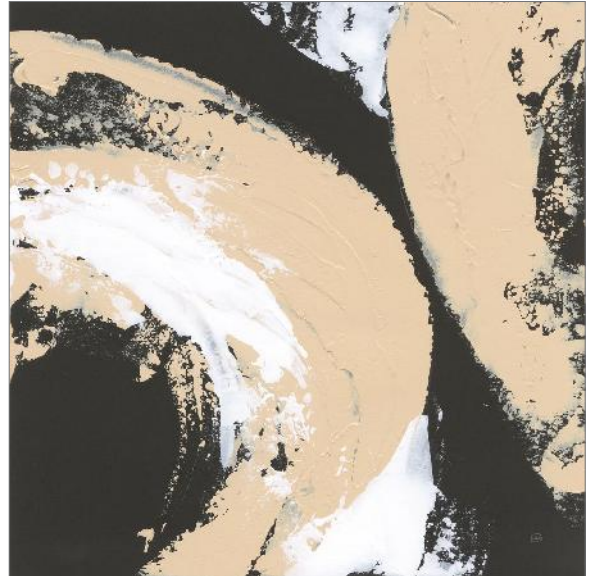


A: 83767 BLACK AND CREAM I | B: 83768 BLACK AND CREAM II
CHRIS PASCHKE

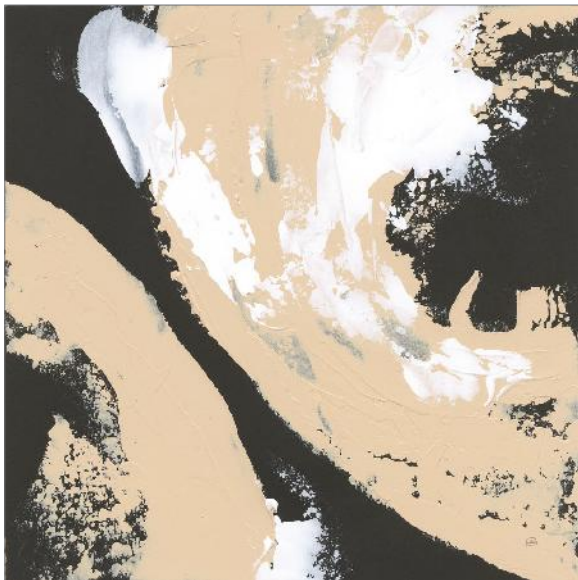
CHRIS PASCHKE



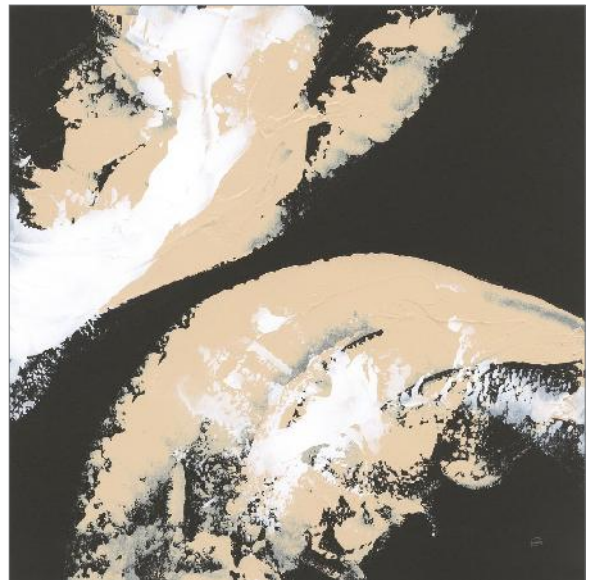
83769 CROSBY I



83770 CROSBY II



83771 CROSBY III



83772 CROSBY IV

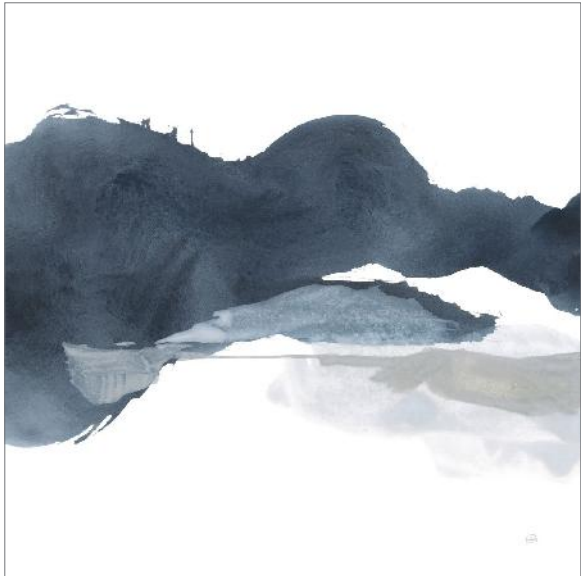
CHRIS PASCHKE



83773 ABSTRACTED COASTAL I



83774 ABSTRACTED COASTAL II



83775 ABSTRACTED COASTAL III



83776 ABSTRACTED COASTAL IV

CHRIS PASCHKE



83787 MUSINGS I



83788 MUSINGS II

CHRIS
PASCHKE

Chris Paschke is an internationally accomplished artist and calligrapher. Her fascination with both Eastern and Western letterforms and art has been a lifelong study. She has studied with contemporary European master calligraphers in Belgium, Germany, Austria, Russia, and after an inspiring visit to China her work took on a strong Asian influence.

For decades her art has been inspired by traditional Chinese masters and Japanese Sumi-e painting, crossed with the edgy abstract expressionism of Kline, Pollock, Rothko, Gottlieb, Motherwell and Jasper Johns—thus redefining both mediums into her own contemporary style. Her art is abstractly interpretive as she uses assorted mediums including gesso, resist, watercolor, gouache, text, encaustic, collaged paper and accents of gold leaf to achieve her images.



82853 SHIMMER
JEANETTE VERTENTES

JEANETTE VERTENTES



82854 ROUGH SURF

SILVIA VASSILEVA



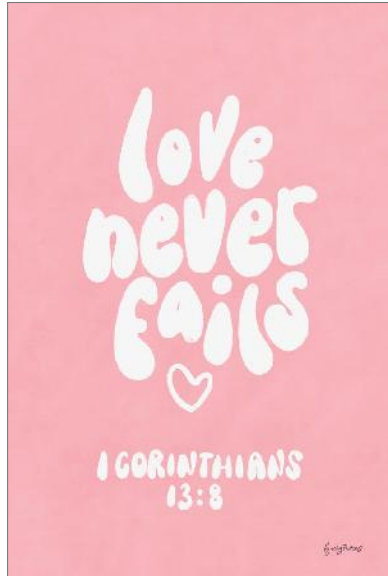
83508 EMERALD WAVE



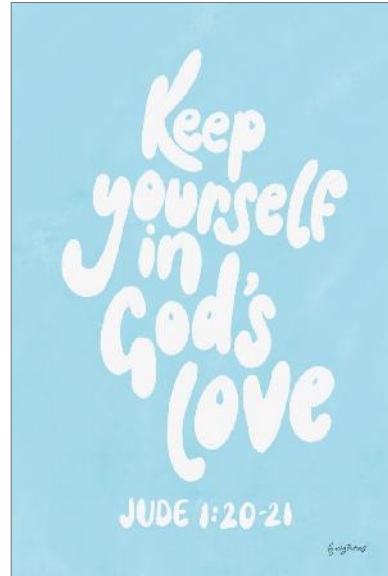
SILVIA
VASSILEVA

Silvia Vassileva pursued her love of art at the Academy of Fine Art in Bulgaria, where she earned both her bachelors and masters degrees. She spent six years painting and exhibiting her work in Japan before moving to the U.S. Silvia describes her style as very free and bold. She makes her paintings come alive by using contrast and unusual color palettes. Silvia's home studio, which she designed herself, is bright, contemporary and minimalist.

BECKY THORNS



83994 GOOD WORDS I



83995 GOOD WORDS II

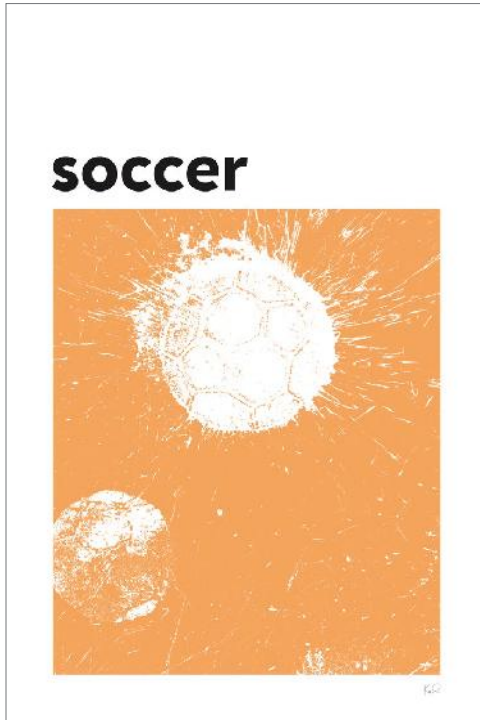


83998 GOOD WORDS V

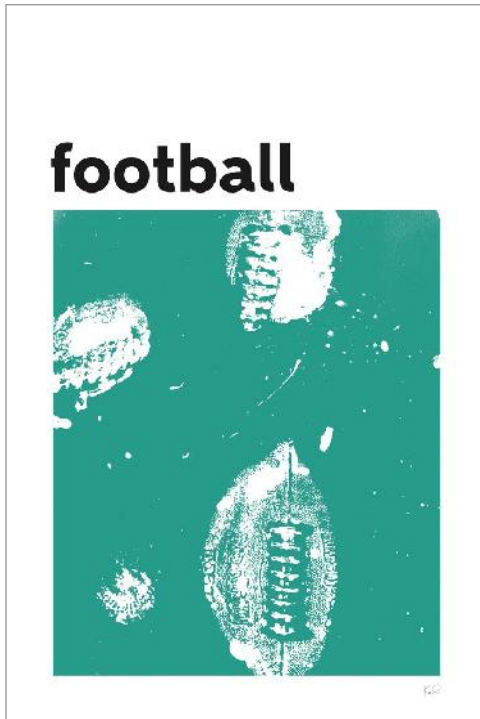


83999 GOOD WORDS VI

KENT YOUNGSTROM



84142 BALLER IV



84141 BALLER III

A: 84139 BALLER I
B: 84140 BALLER II
KENT YOUNGSTROM



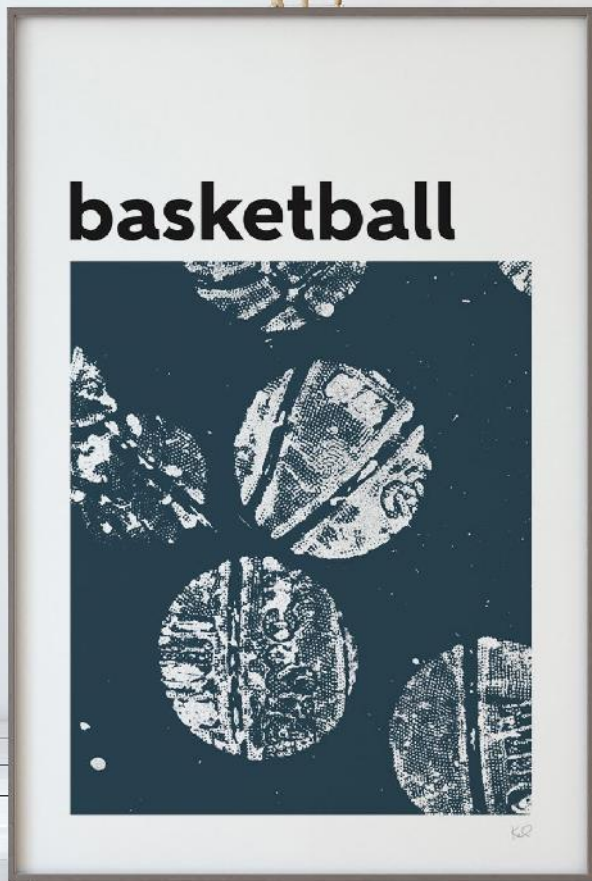
KENT
YOUNGSTROM

*"As an artist I enjoy the struggle as much as the end product."
Kent Youngstrom is an artist with a beautifully varied background from interior design to graphics. His art is a journey combining a touch of faith, sentimental imagery and, every once and a while, a laugh, so that the viewer can experience the same emotional passage.*

A



B



PROUD MEMBER OF

ART © COPYRIGHT © COALITION
PROTECTING ART *and* CREATIVITY