

art DECOR

JULY 2023 | WALL DECOR



NUESTRAS OBRAS Y CUADROS SON PERSONALIZADOS

Todas las imágenes de este catálogo están disponibles para impresión en el tamaño que lo desees. Dependiendo del tipo de enmarcado que elijas, se pueden imprimir en litografía (papel) o Canvas (lienzo).

También las enmarcamos a tu gusto y te asesoramos en todo el proceso

Visítanos y contáctanos:

 www.facebook.com/artgallery.mexico

 www.instagram.com/artgallerymexico/

 www.pinterest.com/artgallerymex/

 www.twitter.com/artgallerymex

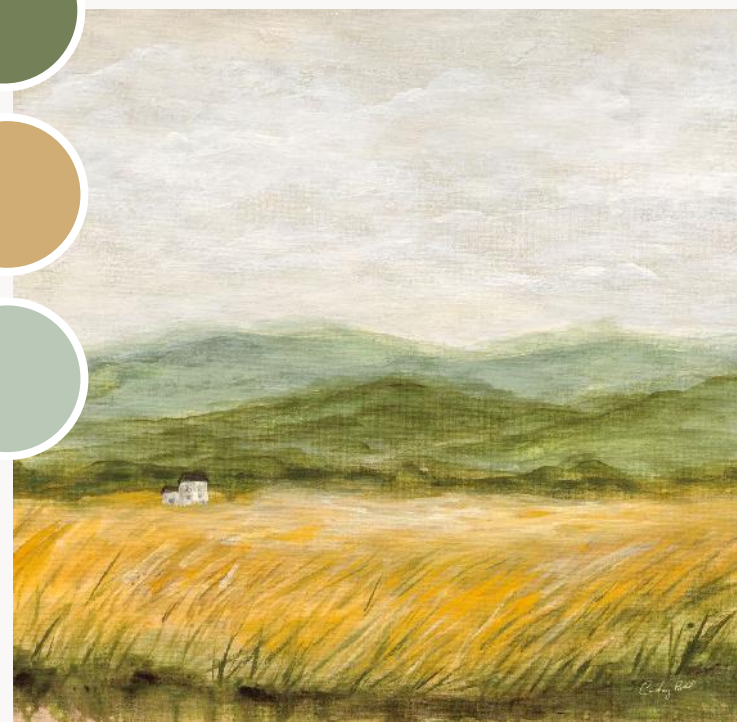






cottage country

With cottage-inspired wall decor, you can create a space that feels like a whimsical retreat, a place where imagination and nostalgia intertwine. Embrace the cozy charm of this trend and let your walls become a canvas that tells a story of idyllic countryside living and timeless beauty.



- 85382 RIVER AND CLOUDS
- 82695 FARMHOUSE ACROSS THE MEADOW
- 72739 MEADOW POPPIES
- 85524 WINDSWEEP I

A



B





A: 85164 COTTAGE RETREAT
B: 85165 RUSTIC CHARM
JULIA PURINTON



A



A: 85382 RIVER AND CLOUDS
B: 84999 MOUNTAIN CREEK
SILVIA VASSILEVA

B



A



B



C



A: 85524 WINDSWEPT I | B: 85525 WINDSWEPT II
COURTNEY PRAHL

C: 85391 WARM BAY TRAIL
DANHUI NAI



85635 MIGRATION MOON
DEBRA VAN SWEARINGEN



85771 WILD BLOOMS II
NATHAN LARSON



85772 WILD BLOOMS III
NATHAN LARSON



85770 WILD BLOOMS I
NATHAN LARSON



83983 PASTURES
NATHAN LARSON

garden gallery

From delicate watercolors to beautiful botanical sketches, ardening-inspired art offers a delightful way to infuse any space with the colors and textures of the natural world. These captivating pieces bring a sense of tranquility, rejuvenation, and a connection to the great outdoors.



C

A



B



A: 84852 COTTAGE GARDENING I | B: 84853 COTTAGE GARDENING II
C: 84854 COTTAGE GARDENING III | D: 84855 COTTAGE GARDENING IV
DANHUI NAI



D

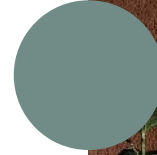
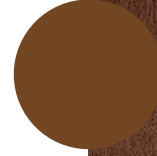
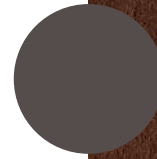


ART DECOR



A: 85743 FALLING FEATHERS I | B: 85744 FALLING FEATHERS II
C: 85745 FALLING FEATHERS III | D: 85746 FALLING FEATHERS IV
KATRINA PETE

E: 84145 GERANIUM GLORY II | F: 84146 GERANIUM GLORY III
DANHUI NAI



F





A: 84102 FERN I | B: 84103 FERN II
DANHUI NAI

A: 85780 FOREST FERNS II | B: 85779 FOREST FERNS I
KATRINA PETE



C



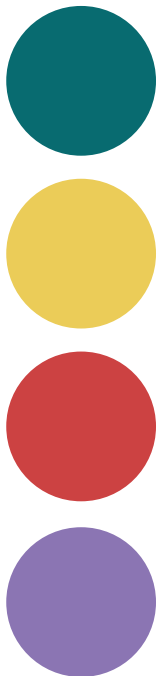
D



butterfly garden

Let's fill our walls with the vibrant beauty of colorful florals and botanicals. Let nature's palette and the graceful dance of butterflies, bees and bugs bring joy and enchantment to our homes. These collections are the perfect way to infuse spaces with the charm of a living garden.

A



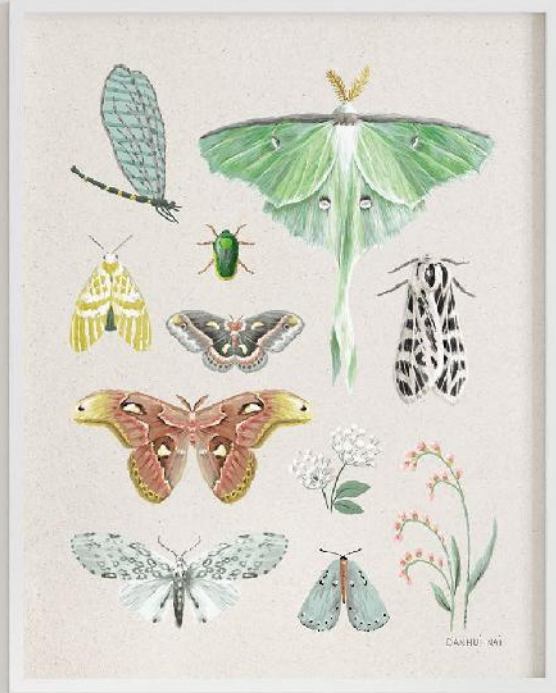
A: 8511 WILDFLOWERS
PAMELA MUNGER

B: 84763 BEAUTY OF THE FOREST III | C: 84764 BEAUTY OF THE FOREST IV
DANHUI NAI

B

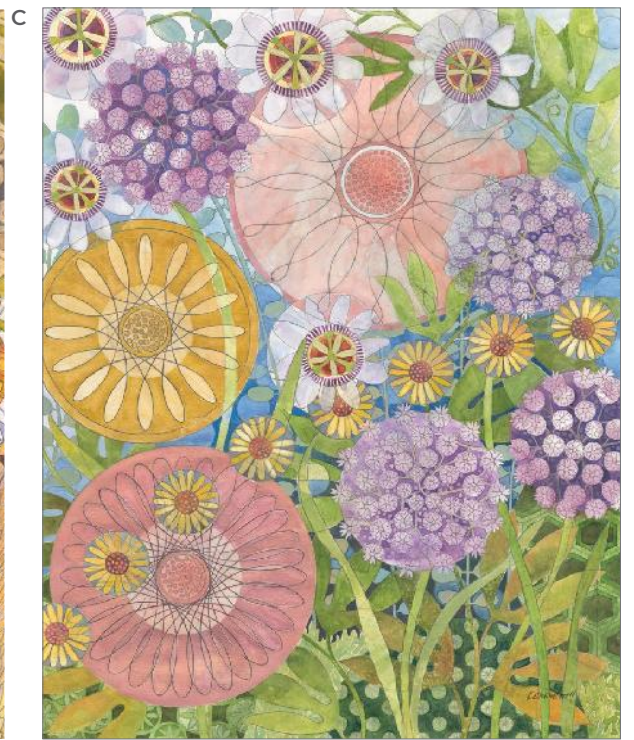


C





A



A: 84749 WHIMSICAL GARDEN I | B: 84750 WHIMSICAL GARDEN II
C: 84751 WHIMSICAL GARDEN III | D: 84752 WHIMSICAL GARDEN IV
KATHRINE LOVELL



A: 85631 VINTAGE BUTTERFLY I | B: 85632 VINTAGE BUTTERFLY II
WILD APPLE PORTFOLIO



85507 GARDEN BEAUTIES III
JULIA PURINTON



85506 GARDEN BEAUTIES II
JULIA PURINTON



85505 GARDEN BEAUTIES I
JULIA PURINTON



85509 GARDEN BEAUTIES V
JULIA PURINTON

A



B



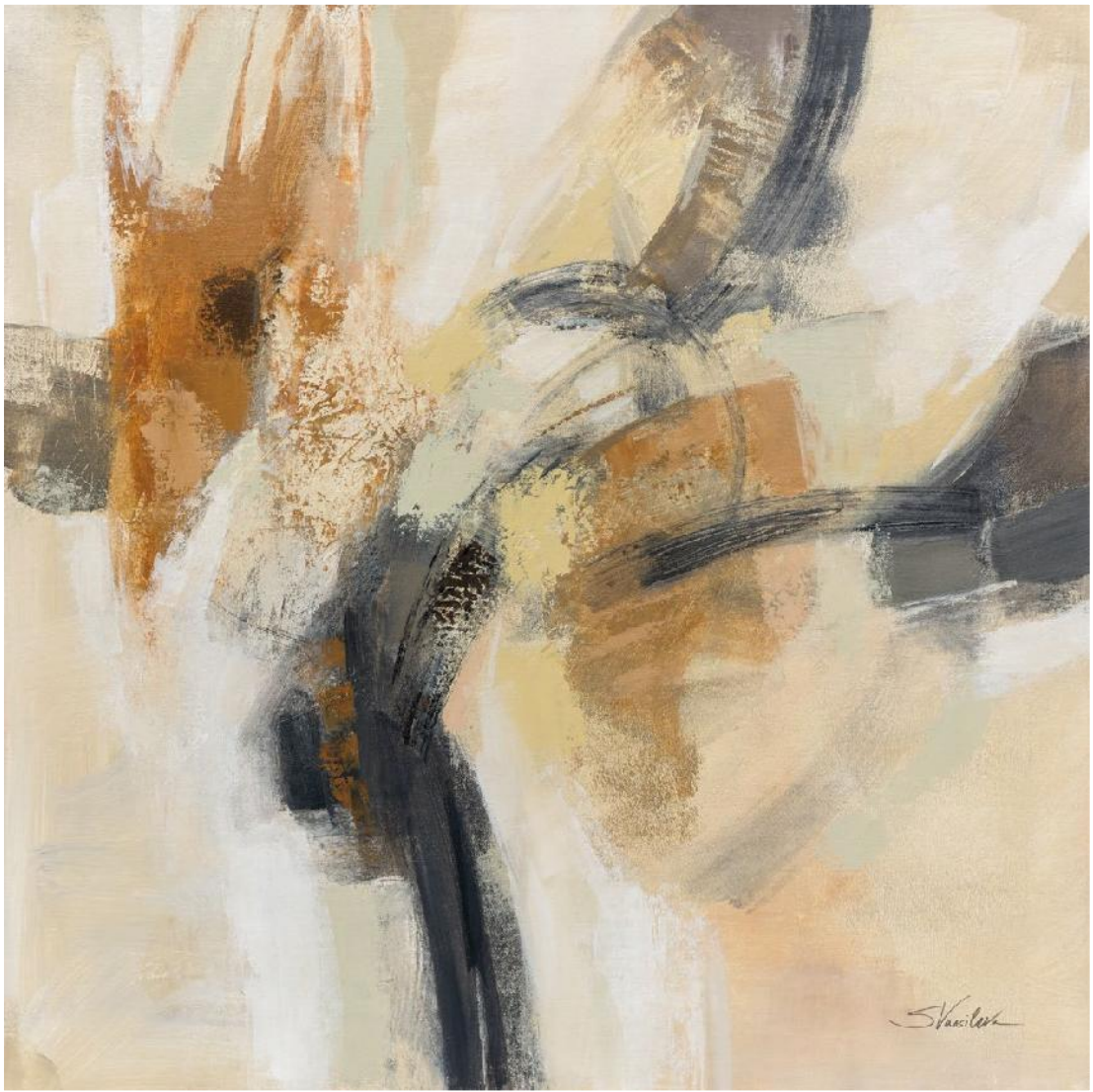


terra

The beauty of warm abstracts lies in their ability to make a statement, effortlessly commanding the attention of anyone who enters the space. These artworks evoke emotions, spark conversations, and add a layer of sophistication to walls, in soft earthy shades with pops of black for added drama.

A: 85001 DUSK I | B: 85002 DUSK II
SILVIA VASSILEVA

A



A: 85000 KYOTO MORNING
SILVIA VASSILEVA

B: 85209 NEUTRAL NIRVANA
DANHUI NAI

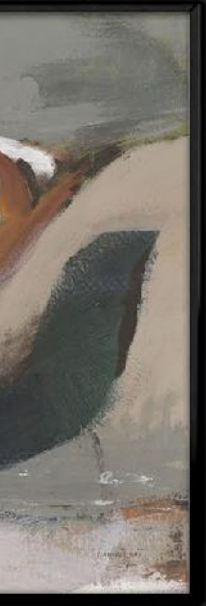
B





A

B



C



A



A: 85200 TRANSCEND II | B: 85199 TRANSCEND I
DANHUI NAI

C: 85661 SHAPE SHIFT II | D: 85662 SHAPE SHIFT III
COURTNEY PRAHL



A: 85201 BALANCING ACT
DANHUI NAI

B: 85630 SPARKLING SNOW | C: 85629 WATER SURFACE
SILVIA VASSILEVA

B



C



explore more art

DANHUI NAI



85373 FLUIDITY DUET I



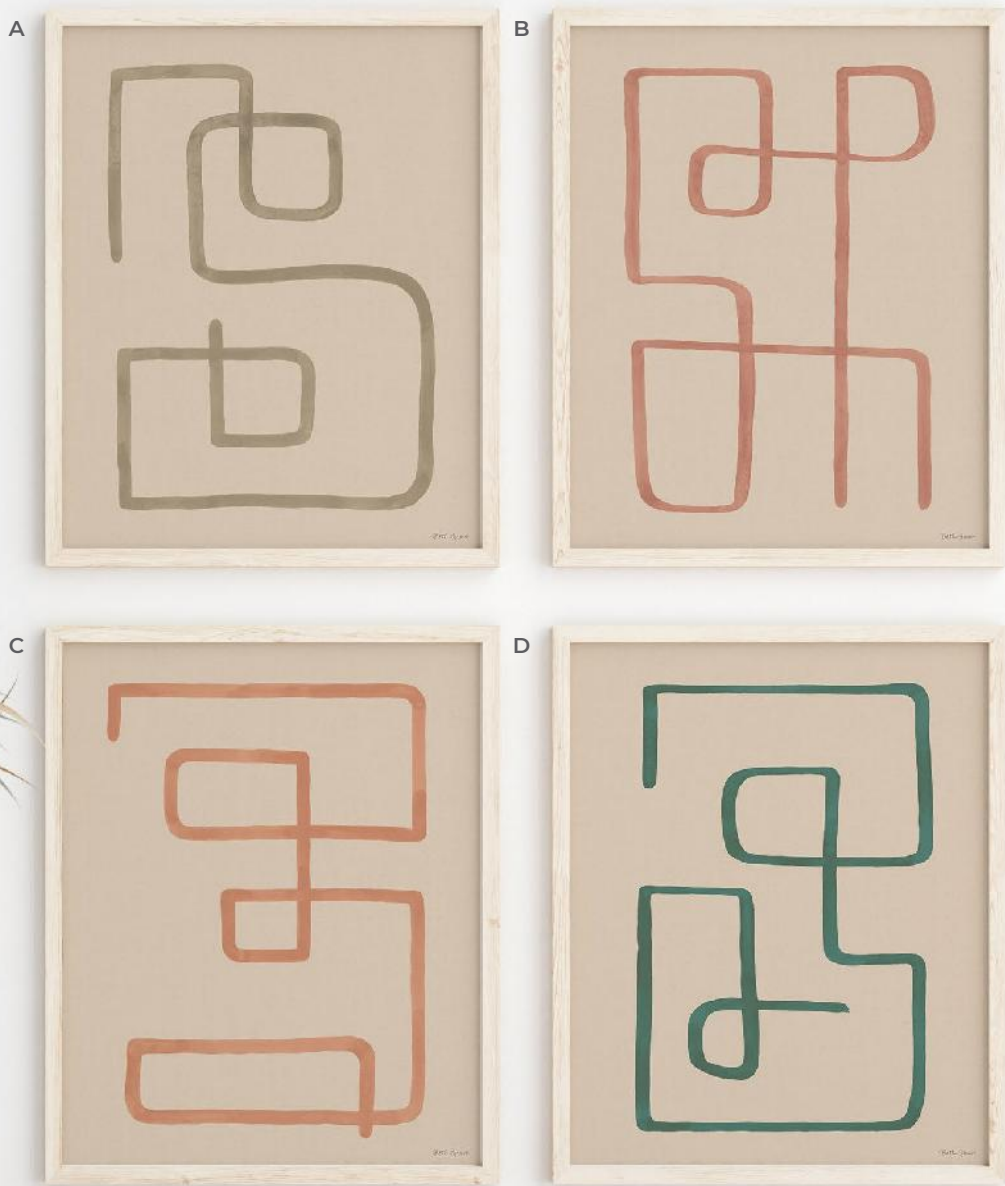
85374 FLUIDITY DUET II



A

B

A: 85395 ELEGANT BALANCE I | B: 85396 ELEGANT BALANCE II
DANHUI NAI



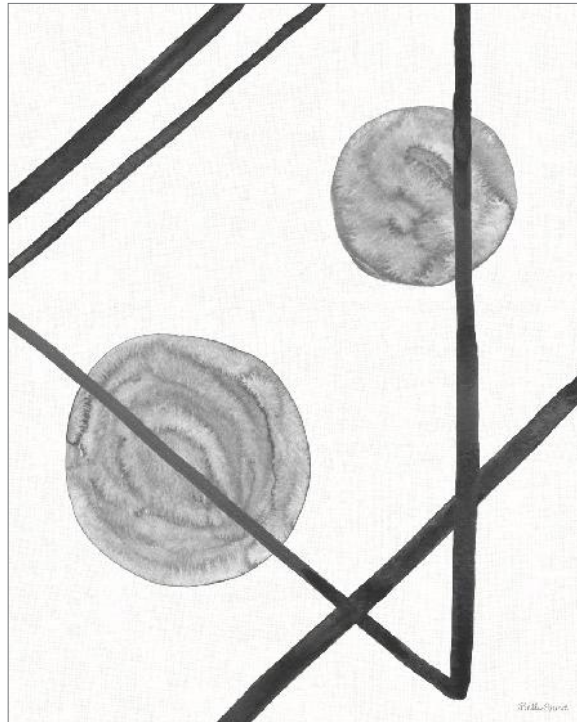
A: 85490 ABSTRACT SQUIGGLE I DESERT
B: 85491 ABSTRACT SQUIGGLE II DESERT
C: 85492 ABSTRACT SQUIGGLE III DESERT
D: 85493 ABSTRACT SQUIGGLE IV DESERT
BETH GROVE



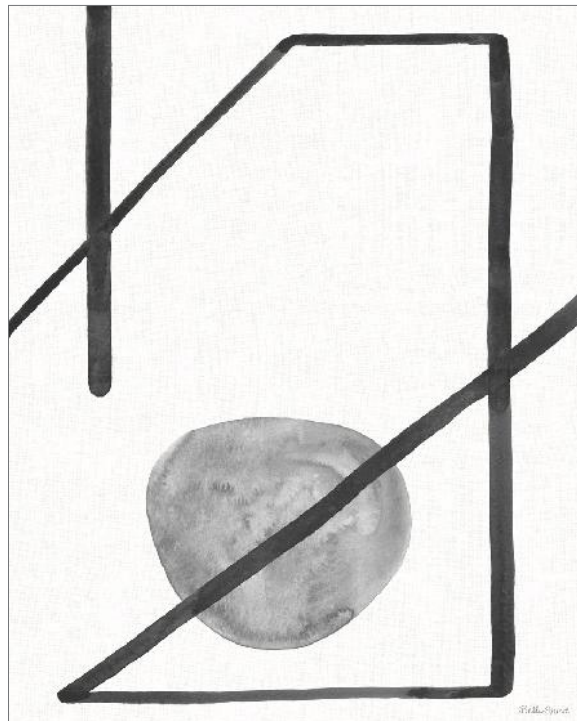
BETH
GROVE

Beth Grove's decorative style is achieved by using traditional drawing and painting techniques, then digitally adding contemporary design elements. She finds color to be one of the most exciting components of art. "I notice color combinations everywhere - in the way people paint their houses, in the flower combinations they plant in their gardens, and in the outfits they wear."

BETH GROVE



85476 FREE FORM I



85477 FREE FORM II

KATRINA PETE



85722 NORTHWEST I



85723 NORTHWEST II

CHRIS PASCHKE



84578 LUXE BANANA LEAF III



84573 LUXE LEAF II



84572 LUXE LEAF I



84579 LUXE BANANA LEAF IV

CHRIS
PASCHKE

Chris Paschke is an internationally accomplished artist and calligrapher. Her fascination with both Eastern and Western letterforms and art has been a lifelong study. She has studied with contemporary European master calligraphers in Belgium, Germany, Austria, Russia, and after an inspiring visit to China her work took on a strong Asian influence.

For decades her art has been inspired by traditional Chinese masters and Japanese Sumi-e painting, crossed with the edgy abstract expressionism of Kline, Pollock, Rothko, Gottlieb, Motherwell and Jasper Johns—thus redefining both mediums into her own contemporary style. Her art is abstractly interpretive as she uses assorted mediums including gesso, resist, watercolor, gouache, text, encaustic, collaged paper and accents of gold leaf to achieve her images.

CHERYL WARRICK



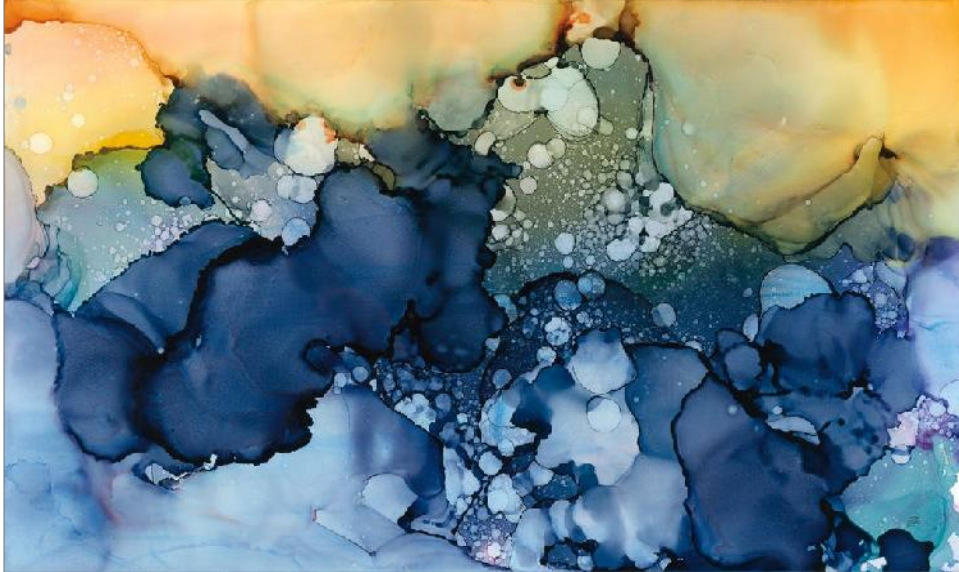
84974 FIELD VIEW



CHERYL
WARRICK

When the viewer engages with a Cheryl Warrick painting, they are seeing more than art. They are experiencing a journey of wisdom where the artist asks the viewer “to look deeper and find a meaning that uplifts the spirit and engages the mind.” A mixed media artist, Cheryl is celebrated for her quilt-like paintings that incorporate symbols, archetypes and landscapes. A painter, printmaker and illustrator for over 20 years, her paintings are found in over 50 corporate and museum collections around the world.

CHRIS PASCHKE



85522 MANIPULATED BLUE I



85523 MANIPULATED BLUE II

SILVIA VASSILEVA



85380 SUMMER ANTICIPATION

CHERYL WARRICK



84789 ABSTRACT LANDSCAPE I



84790 ABSTRACT LANDSCAPE II

JULIA PURINTON



85286 RHAPSODY I



85287 RHAPSODY II

ART DECOR

COURTNEY PRAHL



85660 SHAPE SHIFT I



85663 SHAPE SHIFT IV

JULIA PURINTON



73766 INTO THE BLUE I

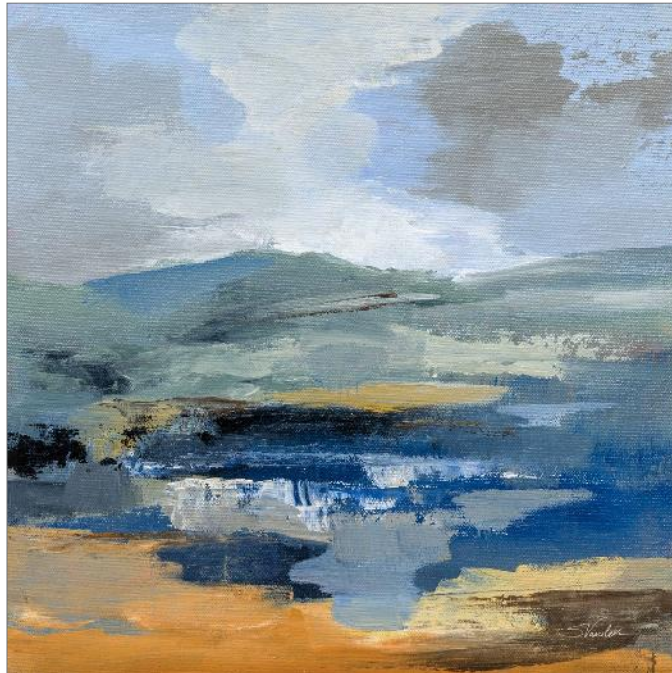


73767 INTO THE BLUE II

SILVIA VASSILEVA



85386 APRIL MOUNTAIN RIVER II



85385 APRIL MOUNTAIN RIVER I

SUE SCHLABACH



85197 BACK BAY REFUGE

DANHUI NAI



85392 COASTLINE

83844 SUMMER DUSK
JULIA PURINTON



JULIA
PURINTON

Artist and muralist Julia Purinton divides her time between urban Washington, DC and a small rural village in Vermont. Both places provide plenty of material for her evocative landscapes and cityscapes. Working in oils, acrylics, venetian plaster and glaze, Julia's artwork has the luminous glow and vintage romance of images by artists who influence her: William Turner, John Singer Sargent and the Brandywine River School painters. Many layers of glaze create the atmospheric moods of her landscapes. Her work is found in galleries in New England.





85214 SUNSET STRIP

JEANETTE VERTENTES



85218 SUNSHINE

JEANETTE VERTENTES



84840 CECILIAS BOUQUET

JEANETTE VERTENTES



85215 PEACH PETAL

85217 CLICQUOT BOUQUET
JEANETTE VERTENTES



JEANETTE
VERTENTES

Jeanette Vertentes is a contemporary painter known for colorful paintings filled with vibrant spirit. Living in Connecticut, close to the sea, her vivid creations are brought to life with contrasting and harmonious colors, movement and bold compositions.



JEANETTE VERTENTES



84842 HYDRANGEA BLUE



84841 CRUSH

SILVIA VASSILEVA



85381 CALIFORNIA SPRING

SILVIA
VASSILEVA

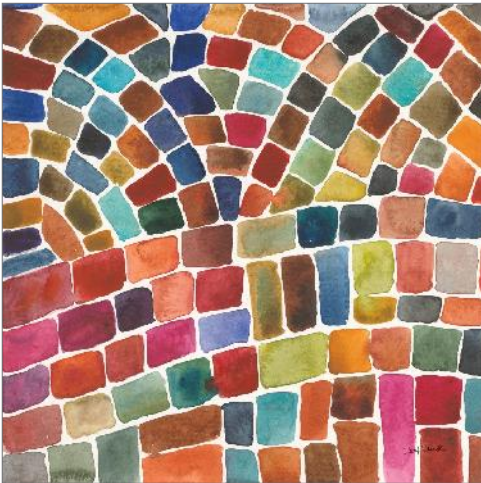
Silvia Vassileva pursued her love of art at the Academy of Fine Art in Bulgaria, where she earned both her bachelors and masters degrees. She spent six years painting and exhibiting her work in Japan before moving to the U.S. Silvia describes her style as very free and bold. She makes her paintings come alive by using contrast and unusual color palettes. Silvia's home studio, which she designed herself, is bright, contemporary and minimalist.

CHERYL WARRICK



84797 BREEZY PETALS II

CHERYL WARRICK



84787 WINDING PATH I



84788 WINDING PATH II

84796 BREEZY PETALS I | CHERYL WARRICK





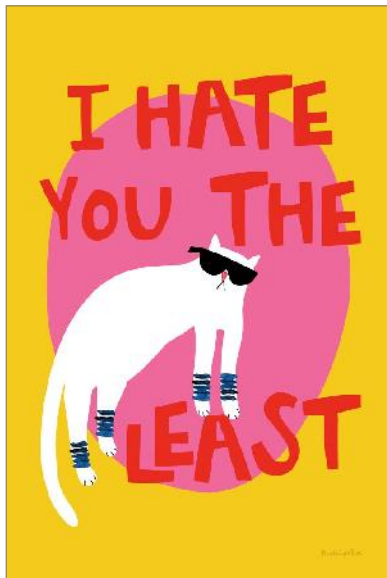
MERCEDES LOPEZ CHARRO



85530 COOL CAT CLUB MATCHES I



85531 COOL CAT CLUB MATCHES II



85527 COOL CAT II



85529 COOL CAT IV

A: 85526 COOL CAT I
 B: 85528 COOL CAT III
 MERCEDES LOPEZ CHARRO



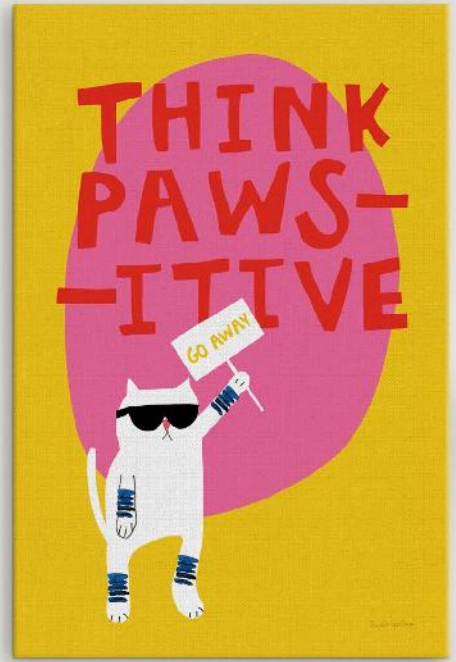
MERCEDES
 LOPEZ CHARRO

Mercedes Lopez Charro lives on the beautiful Mediterranean coast of Spain where palm trees grow, vintage cars are seen daily on the school run and the streets are dotted with high-end boutiques. Sketching and doodling for as long as she can remember, her doodles have now become refined illustrations, sold as prints around the world. Trained as a graphic designer, Mercedes uses watercolor and pen and ink to create her colorful illustrations. When she is not drawing or painting, she can be found enjoying life with her English husband, and son Ollie.

A



B



BELINDA ALDRICH



85565 SHAPE UP I



85566 SHAPE UP II

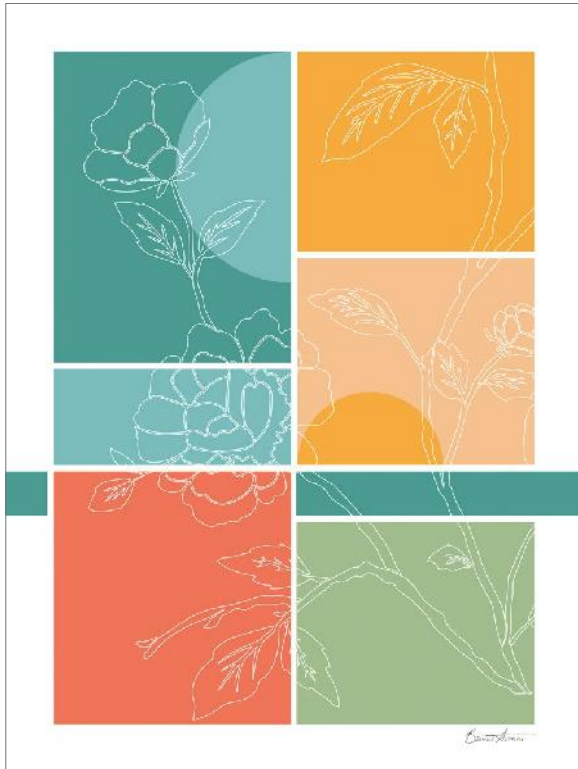


85567 SHAPE UP III

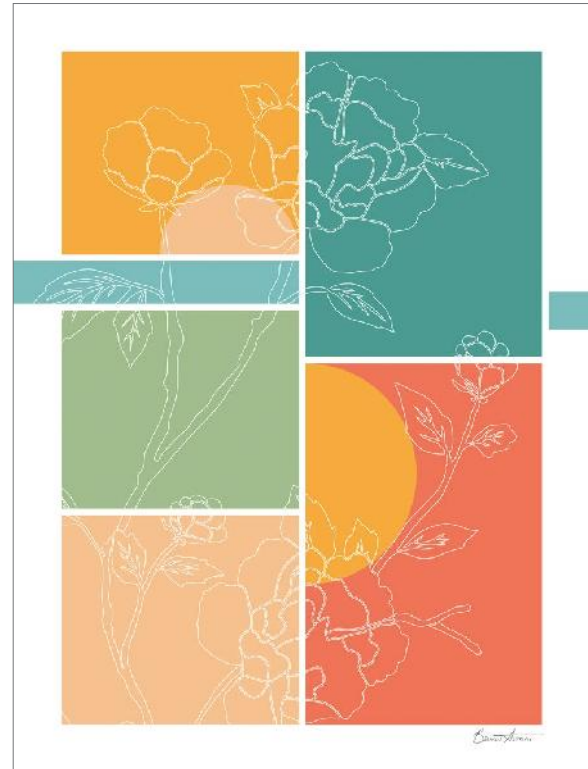


85568 SHAPE UP IV

BELINDA ALDRICH



85569 THROUGH THE LINES I



85570 THROUGH THE LINES II



84035 ORGAN PIPE CACTUS AT DUSK
ALAN MAJCHROWICZ

ALAN MAJCHROWICZ



84036 ORGAN PIPE CACTUS NATIONAL MONUMENT ARIZONA

ALAN MAJCHROWICZ



84039 SUPERSTITION MOUNTAINS SAGUARO

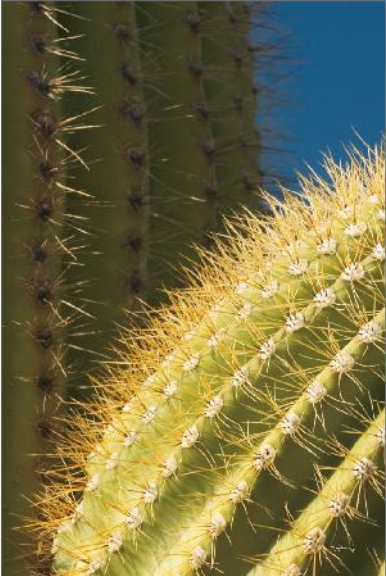
ALAN MAJCHROWICZ



84038 SINGLE SAGUARO



84037 SENTINEL



86030 SAGUARO DETAIL

NATHAN LARSON



83982 HIGHLAND COW SUNSHINE

NATHAN LARSON



84258 BISON CALL BW



84260 BISON BW



84256 BISON PROFILE BW

NATHAN LARSON



83981 FROLICK

85769 MUSTANG
NATHAN LARSON



NATHAN
LARSON

Nathan Larson is a Vermont-based photographer and chocolate consumer. For over 20 years he has created work that ranges from fine art photography to landscapes, abstracts, wildlife, and mixed media. He enjoys collaborating with clients to produce the perfect images for their projects and believes the world is a better place with more art in it. "I still use my first camera, though I have added some tools along the way, and I'm still seeking new ways to share visual stories with my audience."



PROUD MEMBER OF

ART ©OPYRIGHT ©OALITION
PROTECTING ART *and* CREATIVITY