

art DECOR

SEPTEMBER 2023 | WALL DECOR



NUESTRAS OBRAS Y CUADROS SON PERSONALIZADOS

Todas las imágenes de este catálogo están disponibles para impresión en el tamaño que lo desees. Dependiendo del tipo de enmarcado que elijas, se pueden imprimir en litografía (papel) o Canvas (lienzo).

También las enmarcamos a tu gusto y te asesoramos en todo el proceso

Visítanos y contáctanos:

 www.facebook.com/artgallery.mexico

 www.instagram.com/artgallerymexico/

 www.pinterest.com/artgallerymex/

 www.twitter.com/artgallerymex

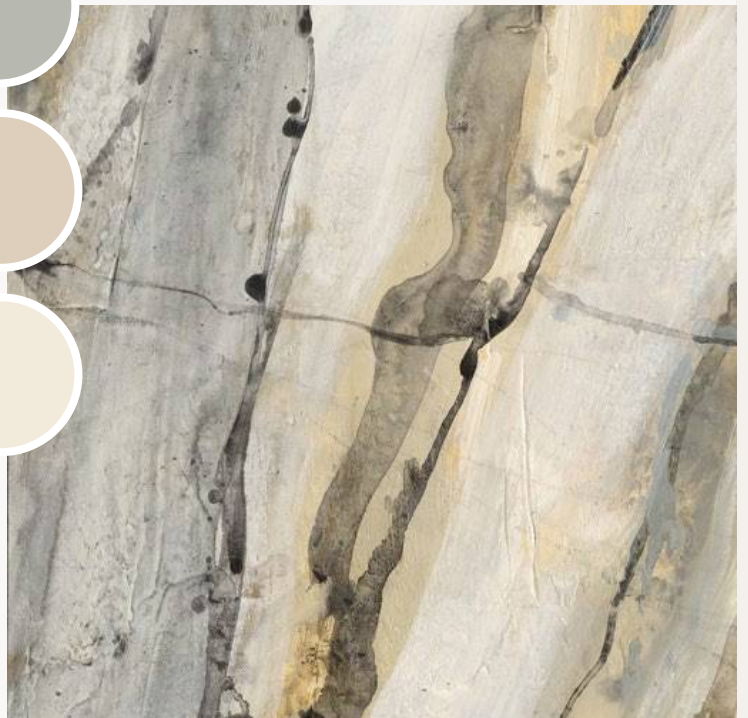
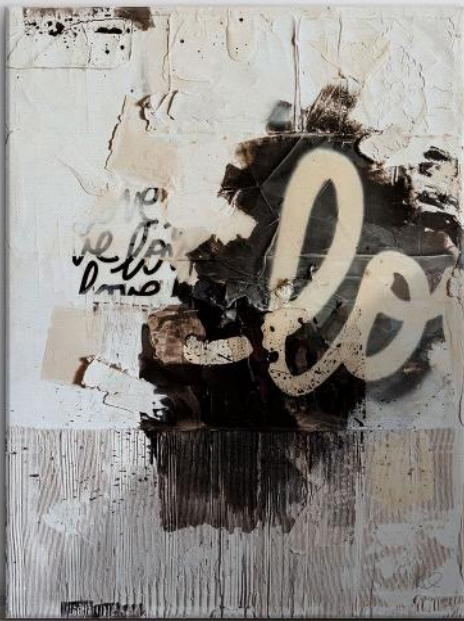
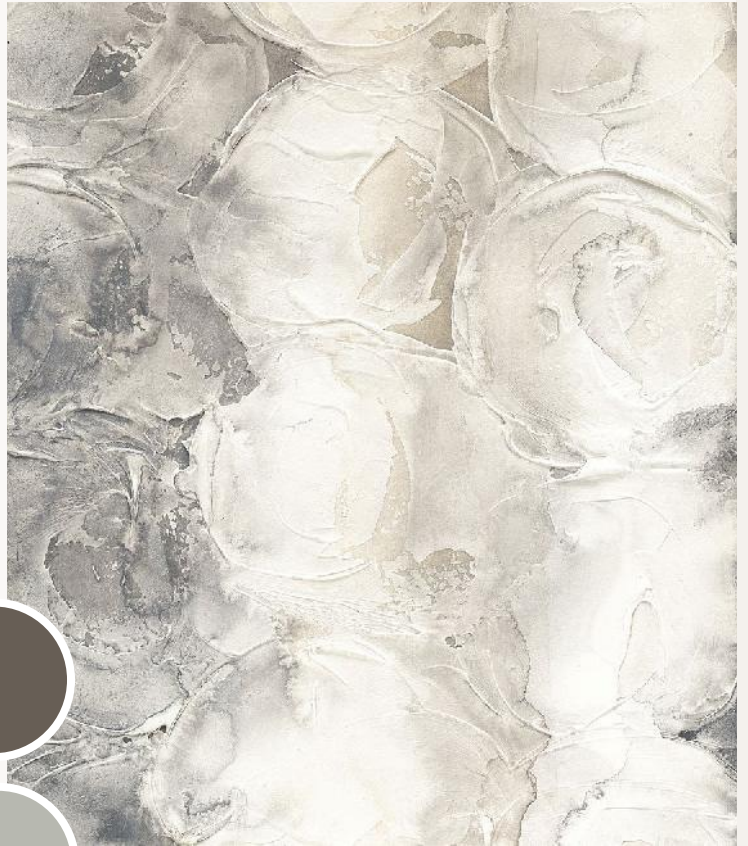






textures

Here, paint is more than just color—
it's a sculpted landscape of emotion
and inspiration. Our artists use
thick applications and a variety
of techniques to create pieces
that are visually stunning and
physically compelling.



- 86515 EMBRACE II
- 80624 ALMOST IN LOVE
- 16884 GRAY CIRCLES I
- 63841 RIVERBANK II





WELCOME BACK

MIKE SCHICK

We are thrilled to announce the return of the incredibly talented Mike Schick to the Wild Apple family. Diving deep into the world of painting, he's once again reminding us of his unparalleled commitment to the nuances of drawing and the beauty of intricate details.

Every masterpiece he crafts is a testament to his spirit of experimentation. For Mike, it's not just about the end result but the passionate journey of creation. We're eager and excited to share his latest collections, a culmination of influences and inspirations that shape each stroke on the canvas.

ART DECOR



After dedicating many years to the world of three-dimensional arts, where he carved a niche for himself as a skilled sculptor and an innovative designer of home accessories, Mike Schick decided to venture into the realm of painting. In this new medium, just as in his prior artistic endeavors, he places immense importance on the nuances of drawing, with a keen eye on the intricate de-tails of surface and texture.



A: 86332 SOMEWHERE I | B: 86333 SOMEWHERE II
MIKE SCHICK



A



B





A



B



C



Every piece of art he creates is approached with a spirit of experimentation. For Mike, the act of painting is not just about the final image on the canvas, but the journey to get there. With each brushstroke, he finds himself continually amazed and amused by the myriad influences and inspirations that converge to shape the final masterpiece.

A: 86336 WAX AND WANE
B: 86514 EMBRACE I
C: 86515 EMBRACE II
MIKE SCHICK







86337 TRANSFORMATION
MIKE SCHICK



big shapes



Say hello to the latest abstract looks: a modern fusion of geometric and organic shapes rendered in a mix of calming neutrals and spirited brights. Think of it as a lively party where Kandinsky meets Matisse, bringing an engaging visual story right to your walls. Versatile in style and easy to integrate, these art pieces are just as at home in a chic loft as they are in a cozy study. This collection is more than just art; it's a mood, a statement, and a vibrant addition to any space.

B



A: 86334 MONOLITHIC I
B: 86335 MONOLITHIC II
MIKE SCHICK

A



B



C





D



- A: 85836 FINDING MY WAY I
 - B: 85837 FINDING MY WAY II
 - C: 85838 TAPESTRY
 - D: 85834 QUADRANTS
- DANHUI NAI



56294 RAINBOW BRIDGE
MOIRA HERSHEY



86233 CURVILINEAR V
CHRIS PASCHKE



86234 CURVILINEAR VI
CHRIS PASCHKE



86235 CURVILINEAR VII
CHRIS PASCHKE



86236 CURVILINEAR VIII
CHRIS PASCHKE

warm tones

Featuring fluid lines and captivating brushstrokes in a serene palette of greys, browns, and creams, these pieces are the epitome of modern elegance and emotional depth. Designed to fit effortlessly into any décor style, these warm-toned abstracts offer an easy way to elevate any space.

85899 SEASONAL CHANGES
PAMELA MUNGER





A



B



C



D





A: 86089 TACTILE INSPIRATION V | B: 86090 TACTILE INSPIRATION VI
C: 86091 TACTILE INSPIRATION VII | D: 86092 TACTILE INSPIRATION VIII
E: 82288 COMPOSITE V | F: 82289 COMPOSITE VI

CHRIS PASCHKE

ART DECOR

A: 86368 TANGERINE GLOW
SILVIA VASSILEVA

B: 13740 AERIAL VIEW II
C: 13739 AERIAL VIEW I
MIKE SCHICK





A



B





A: 49029 QUINTET II
B: 48849 QUINTET I
MIKE SCHICK



nudes

This art isn't just captivating; it's a conversation starter—effortlessly stylish and endlessly versatile. With just a few sketchy or fluid lines, our artists masterfully capture human emotion and form, delivering pieces that are as playful as they are refined.

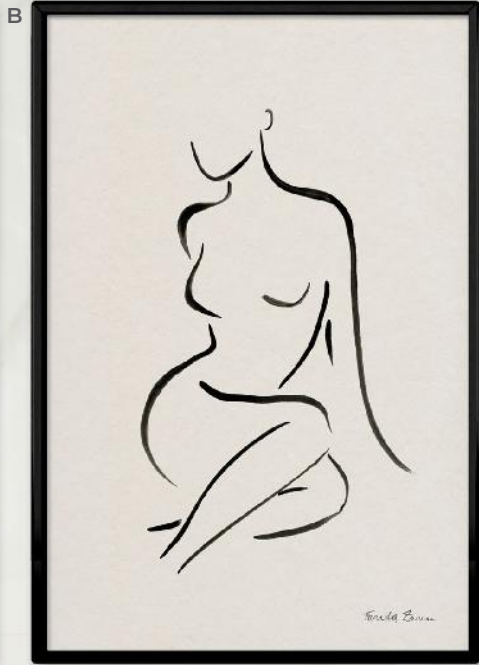
A: 86344 FEMININE | B: 86345 FIGURATIVE I | C: 86346 FIGURATIVE II
DANHUI NAI

B



C





A: 86258 NUDE I | B: 86259 NUDE II
FARIDA ZAMAN



86508 SKETCHED NUDES I
ANNE TAVOLETTI



86509 SKETCHED NUDES II
ANNE TAVOLETTI



86510 SKETCHED NUDES III
ANNE TAVOLETTI



86511 SKETCHED NUDES IV
ANNE TAVOLETTI

matisse matters

With a palette that both honors and reinvents Matisse's iconic hues, these pieces burst with modern vitality. Simple shapes, expressive lines, and captivating silhouettes make this collection a visual feast for anyone craving a modern twist on a classic.



A: 86573 FLORAL JOY I | B: 86574 FLORAL JOY II
MOIRA HERSHEY

C: 86577 ORGANICS III | D: 86575 ORGANICS I | E: 86576 ORGANICS II | F: 86578 ORGANICS IV
BETH GROVE



A

B





A: 86265 BLOOMING BLUE II
B: 86264 BLOOMING BLUE I
FARIDA ZAMAN



A



B



A: 86479 FLOWER MARKET II
 B: 86482 FLOWER MARKET V
 LAURA MARSHALL



86480 FLOWER MARKET III
LAURA MARSHALL



86481 FLOWER MARKET IV
LAURA MARSHALL



86478 FLOWER MARKET I
LAURA MARSHALL



86483 FLOWER MARKET VI
LAURA MARSHALL

TRENDING NOW

Barbiecore



From wardrobe choices to interior stylings, Barbiecore goes beyond just pops of pink—it's an entire mood that revels in unabashed femininity.

But let's be clear: the trend isn't just about draping everything in shades of pink. This emerging fashion and home décor movement is a celebration of self-assurance, originality, and daring individuality. For those who adopt this jubilant style, life just got a whole lot bolder.



To fuel your creative fires and invigorate your home's aesthetics, we've curated a selection of the finest Barbiecore art.

This aesthetic isn't just a style; it's a mood, a statement, a lifestyle. It encapsulates the vibrant pink palettes, high-gloss glamor, and unapologetic femininity that made Barbie a cultural phenomenon.





A: 82827 PINK LIPS | D: 82825 GLITZ AND GLAM VII PINK
MERCEDES LOPEZ CHARRO

B: 73020 COASTAL INK VI CROP I | C: 73021 COASTAL INK VI CROP II
CHRIS PASCHKE



53888 BOTANICAL PINK ROSE I KISS
WILD APPLE PORTFOLIO



53889 BOTANICAL PINK ROSE II YOU
WILD APPLE PORTFOLIO



33335 PINK LADY II
ELIZABETH URQUHART



33337 PINK LADY IV
ELIZABETH URQUHART



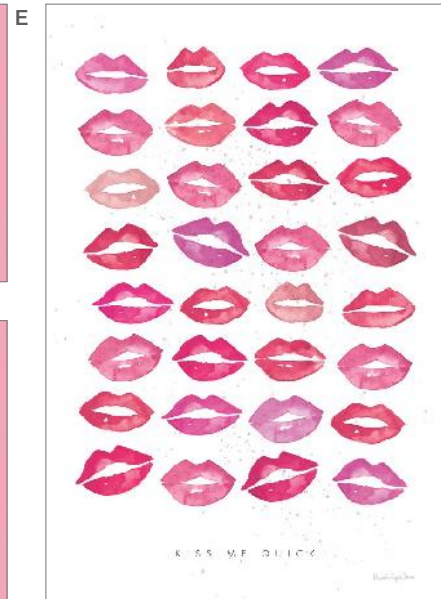
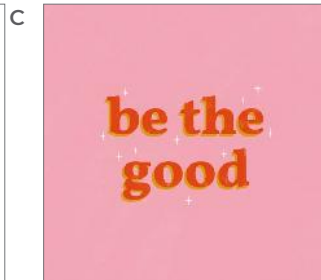
A: 73776 INNER BEAUTY I | D: 73777 INNER BEAUTY II
 MERCEDES LOPEZ CHARRO

B: 67376 BEACH CHIC III BLUSH | E: 67377 BEACH CHIC IV BLUSH
 OMAR ESCALANTE

C: 58986 LETS CHASE RAINBOWS XX
 JENAYA JACKSON

F: 46225 WAKE UP AND MAKE UP IV
 MARCO FABIANO

ART DECOR



A: 84597 COWGIRLY V | F: 84598 COWGIRLY VI
OMAR ESCALANTE

B: 77129 KISS ME QUICK | E: 82823 KISS ME QUICK PINK
MERCEDES LOPEZ CHARRO

C: 64287 BE THE GOOD | D: 69338 SEE THE GOOD CROP
BECKY THORNS



A



B



C

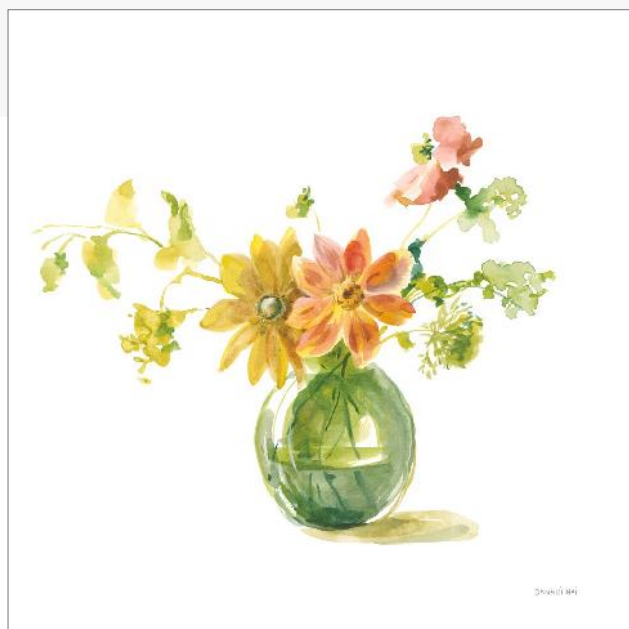


A: 67177 BEACH BABES III
JANELLE PENNER

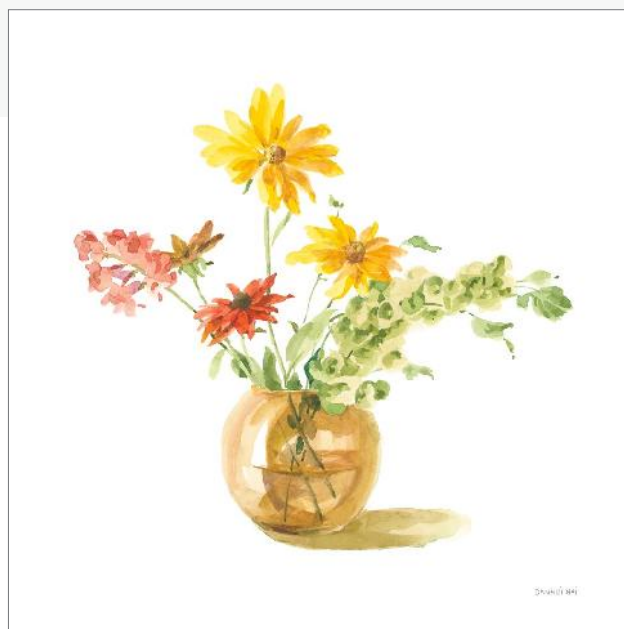
B: 61321 SUNGLASSES FOR ALL II | C: 61256 GLAMOUR SUNGLASSES
ANN KELLE

explore more art

DANHUI NAI



85882 SUMMER SERENADE I



85883 SUMMER SERENADE II

DANHUI NAI



85888 SUMMER ROMANCE

DANHUI NAI



85891 WILD ABOUT WILDFLOWERS

SILVIA VASSILEVA



86370 DELICATE FLORAL I



86371 DELICATE FLORAL II

DEBRA VAN SWEARINGEN



86250 CORAL PEONIES I



86251 CORAL PEONIES II



86252 CORAL PEONIES III



86253 CORAL PEONIES IV



86254 CORAL PEONIES V

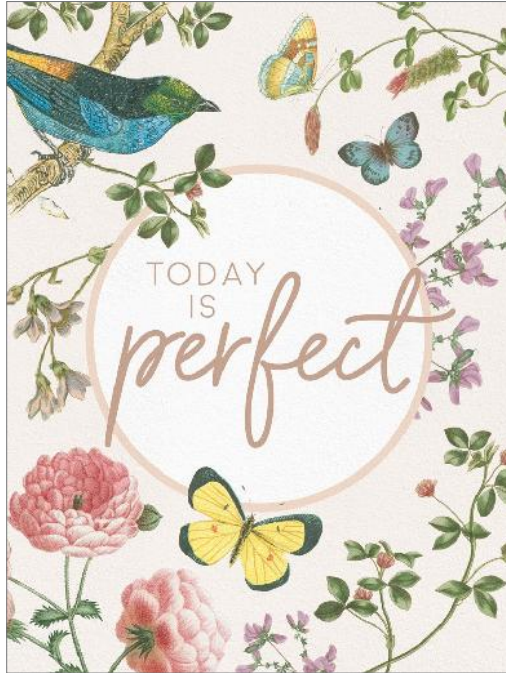


86255 CORAL PEONIES VI



DEBRA VAN
SWEARINGEN

Debra Van Swearingen has had a passion for photography since the age of 12. She supported her hobby by working in government contracts, while taking classes at the Oklahoma School of Photography. It was in 1995, after a year of cancer remediation, that Debra decided to make her passion and her profession one and the same. Her studio is in the artistically vibrant Paseo District of Oklahoma City.



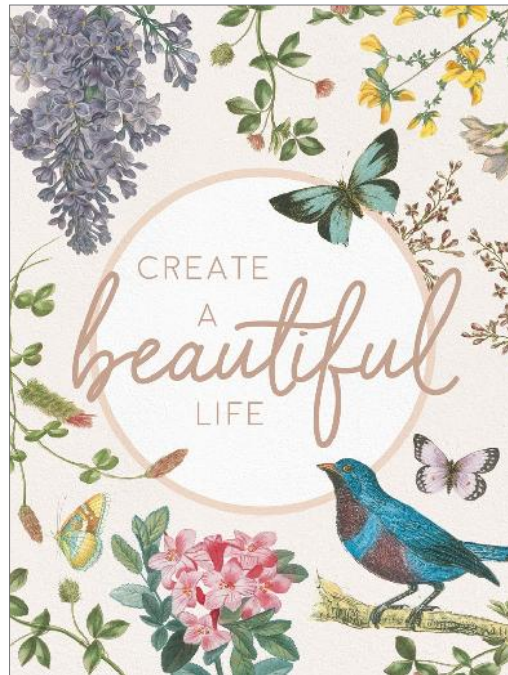
83672 VICTORIAN GARDEN BRIGHT IX
WILD APPLE PORTFOLIO



83660 BLOOMING BUNNIES IV
KATRINA PETE



83659 BLOOMING BUNNIES III
KATRINA PETE



83673 VICTORIAN GARDEN BRIGHT X
WILD APPLE PORTFOLIO

KATRINA PETE

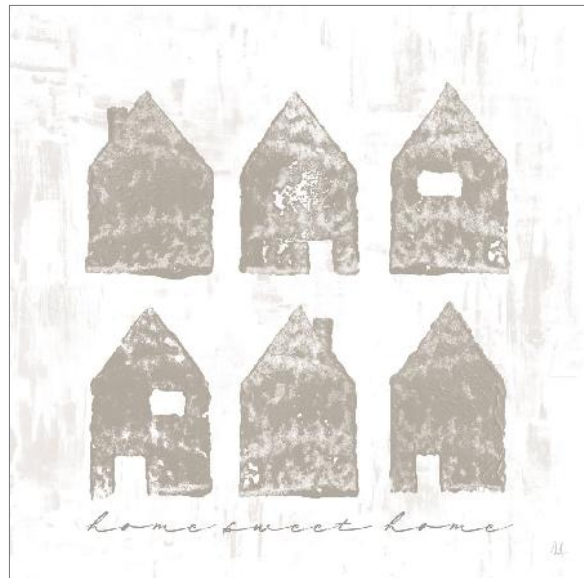


83658 BABY BUNNY

SARAH ADAMS



84627 HOME SWEET HOME III



84628 HOME SWEET HOME IV

A



B



A: 86386 GREEN MEADOW I | B: 86387 GREEN MEADOW II
SILVIA VASSILEVA

SILVIA VASSILEVA



86384 MAY LAVENDER FIELD I



86385 MAY LAVENDER FIELD II

SILVIA VASSILEVA



86382 MORNING GLOW II



86383 MORNING GLOW III



86381 MORNING GLOW I

SILVIA VASSILEVA



86369 BY THE LAKE

SILVIA
VASSILEVA

Silvia Vassileva pursued her love of art at the Academy of Fine Art in Bulgaria, where she earned both her bachelors and masters degrees. She spent six years painting and exhibiting her work in Japan before moving to the U.S. Silvia describes her style as very free and bold. She makes her paintings come alive by using contrast and unusual color palettes. Silvia's home studio, which she designed herself, is bright, contemporary and minimalist.

PAMELA MUNGER



84604 GRAZING



PAMELA
MUNGER

Pamela Munger grew up in southern California and now calls rural western Colorado home. The big sky, mountains and seasons are a constant inspiration for her. "Painting is a lifeline, combining creativity, solitude and limitless possibilities. I'm all about experimentation with paint, surfaces and subject matter. I like to keep it simple, avoiding detail and not giving away the whole story."

Pamela started painting as a creative outlet for her work as an English teacher, which soon grew to a passion. She paints with acrylics, using brushes and palette knives. Pamela and her husband co-own Misty Mountain Hop Farm and she paints full time. If she isn't enjoying the outdoors, you'll find her at her easel.

DANHUI NAI



85887 ECHOES OF SHORE

DANHUI NAI



83134 VALLEY RIVER

A



B



A: 86372 TRANQUIL TRAILS I | B: 86373 TRANQUIL TRAILS II
DANHUI NAI

DANHUI NAI



86374 FIELD OF GOLD I

WELLINGTON STUDIO



86341 ETHEREAL CLOUD

WELLINGTON STUDIO



84113 WILD HORSES

NATHAN LARSON



84267 SNOWY RANGE

ALAN MAJCHROWICZ



86296 BORREGO BADLANDS



86297 BRYCE CANYON



86298 CORONA ARCH



A



B



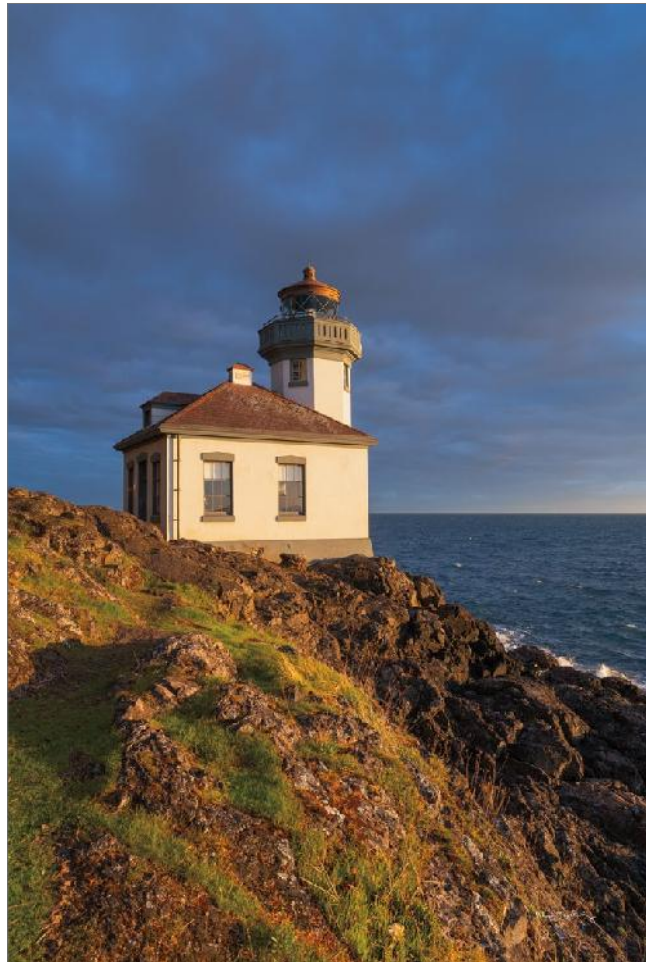
A: 86299 CATTLE POINT
LIGHTHOUSE
B: 86300 EVENING LIGHT OVER
CATTLE POINT
ALAN MAJCHROWICZ



ALAN
MAJCHROWICZ

Wilderness photographer Alan Majchrowicz is fortunate to be able to combine his passion for the outdoors with his profession. Born, raised and educated in the midwest, Alan felt the call of the Pacific Northwest and moved there in 1980. He travels widely with backpack and camera to find the out-of-the-way places that appear in his extraordinary photographs.

ALAN MAJCHROWICZ



86301 LIME KILN LIGHTHOUSE

NATHAN LARSON

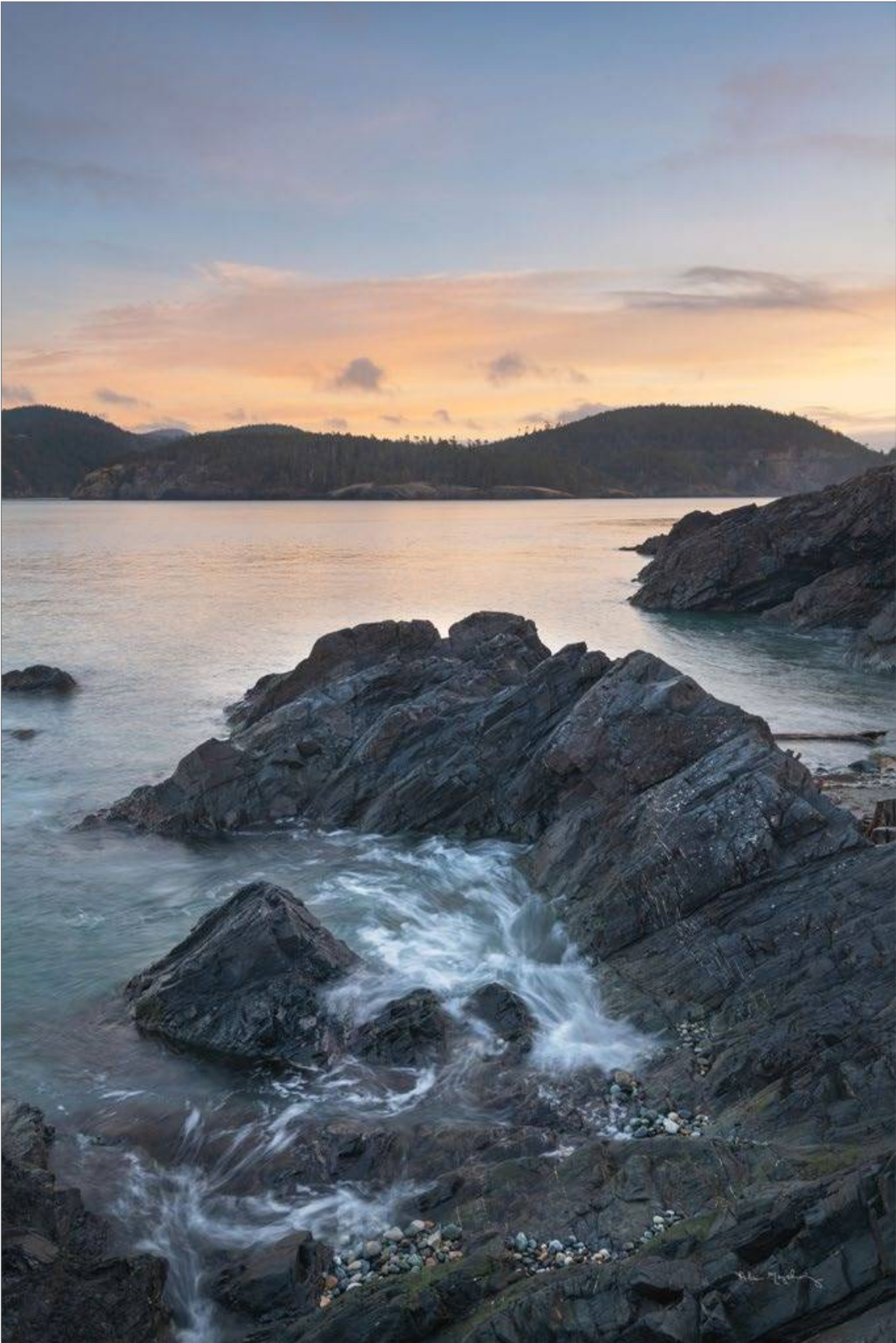


87004 OREGON COAST UMPQUA RIVER LIGHTHOUSE



NATHAN
LARSON

Nathan Larson is a Vermont-based photographer and chocolate consumer. For over 20 years he has created work that ranges from fine art photography to landscapes, abstracts, wildlife, and mixed media. He enjoys collaborating with clients to produce the perfect images for their projects and believes the world is a better place with more art in it. "I still use my first camera, though I have added some tools along the way, and I'm still seeking new ways to share visual stories with my audience."



86302 JAGGED ROCKS AT DECEPTION PASS



86303 RIALTO BEACH WAVES
ALAN MAJCHROWICZ

ALAN MAJCHROWICZ



86305 WEST BEACH DECEPTION PASS



86304 WEST BEACH DECEPTION PASS SEASCAPE

SILVIA VASSILEVA



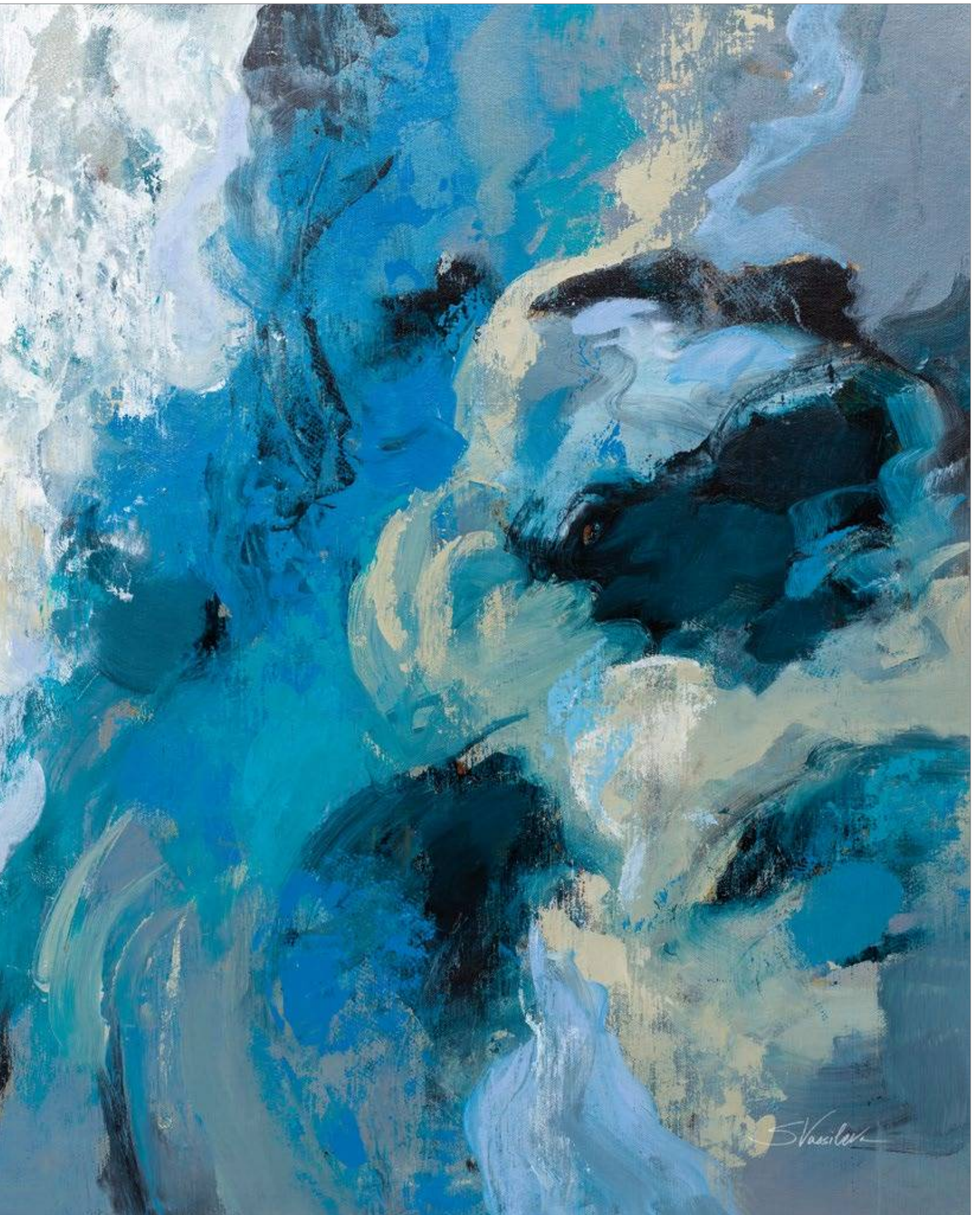
84527 SILVER LAGOON II



84526 SILVER LAGOON I

83094 MONSOON | SILVIA VASSILEVA





86273 CRASHING WAVES
DANHUI NAI

DANHUI NAI



85886 CASCADE



DANHUI
NAI

Danhui Nai was born in mainland China and raised in an artistic household with her sculptor father and painter mother. Her natural passion for art was guided through classical training which she applies in her California studio to create beautiful, on-trend artwork in a variety of media. She studied interior design later in Paris and New York City. She worked in the textile industry in Manhattan, where she continued her studies and artistic development.



PROUD MEMBER OF

ART ©OPYRIGHT ©OALITION
PROTECTING ART *and* CREATIVITY