

# art DECOR

NOVEMBER 2023 | WALL DECOR







## NUESTRAS OBRAS Y CUADROS SON PERSONALIZADOS

Todas las imágenes de este catálogo están disponibles para impresión en el tamaño que lo desees. Dependiendo del tipo de enmarcado que elijas, se pueden imprimir en litografía (papel) o Canvas (lienzo).

También las enmarcamos a tu gusto y te asesoramos en todo el proceso

Visítanos y contáctanos:

-  [www.facebook.com/artgallery.mexico](https://www.facebook.com/artgallery.mexico)
-  [www.instagram.com/artgallerymexico/](https://www.instagram.com/artgallerymexico/)
-  [www.pinterest.com/artgallerymex/](https://www.pinterest.com/artgallerymex/)
-  [www.twitter.com/artgallerymex](https://www.twitter.com/artgallerymex)





# shapes of nature

There is a serene shift towards nature-inspired art collections that are embracing the simple, fluid forms of plants and flowers. These artworks, modern yet timeless, utilize solid block colors to carve out simplified compositions, showcasing the beauty of the natural world without the intricacies.



87461 BOTANICAL JOY II  
84644 FLORAL ABSTRACT I | 84645 FLORAL ABSTRACT II  
69584 MID CENTURY MODERN IV LIGHT  
79067 WINDING VINE



A: 87360 ABSTRACT GARDEN I | B: 87361 ABSTRACT GARDEN II  
JANELLE PENNER



87316 BLOOMING JOY III  
DANHUI NAI



87317 BLOOMING JOY IV  
DANHUI NAI

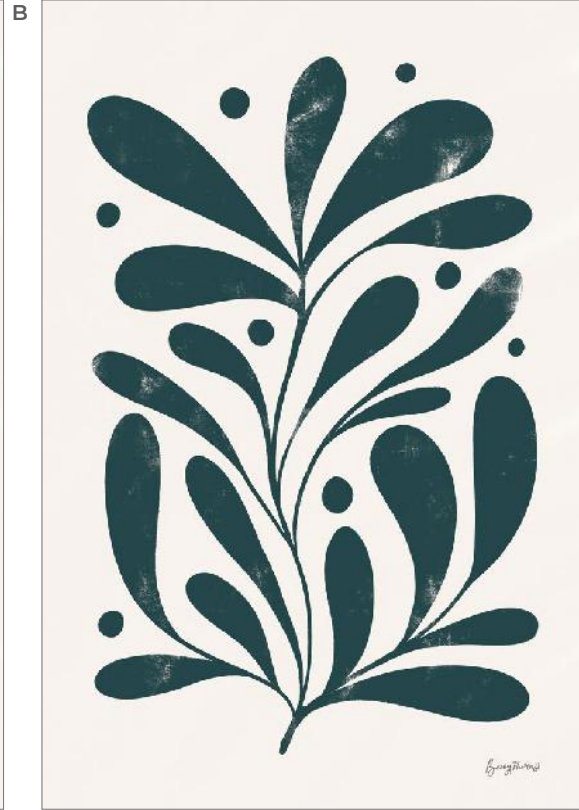


87460 BOTANICAL JOY I  
DANHUI NAI



87461 BOTANICAL JOY II  
DANHUI NAI

# ART DECOR



A: 87472 SIMPLE BOTANICAL IV | B: 87471 SIMPLE BOTANICAL III  
C: 87469 SIMPLE BOTANICAL I | D: 87470 SIMPLE BOTANICAL II  
BECKY THORNS





D





A



B



C



A: 86955 BOTANIQUE BEAUTY IV | B: 86953 BOTANIQUE BEAUTY II  
C: 86947 FOREST FERN TRIO I | D: 86948 FOREST FERN TRIO II  
E: 86949 FOREST FERN TRIO III  
CHERYL WARRICK

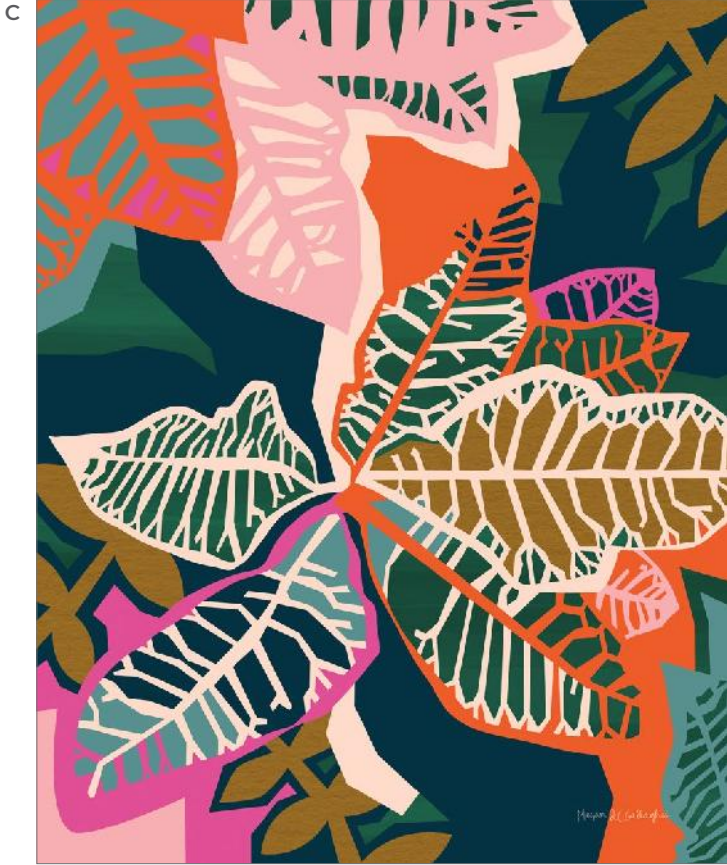


A



B



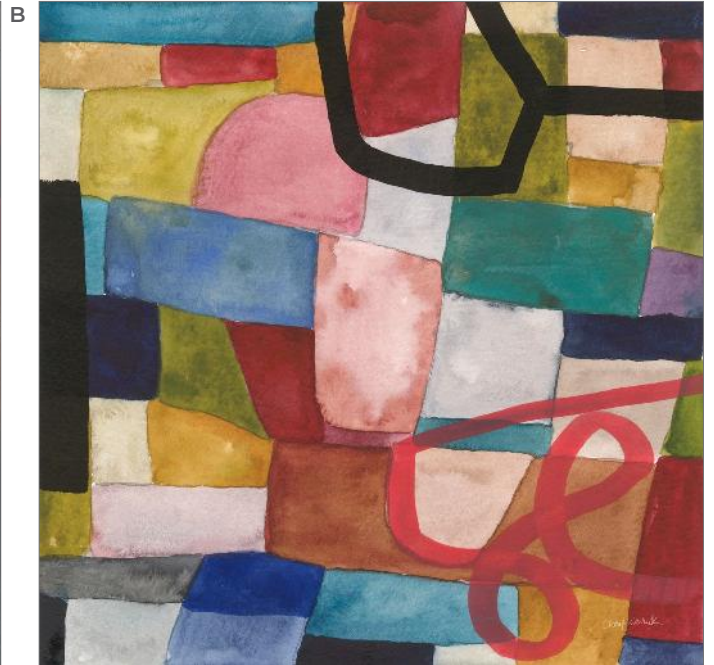
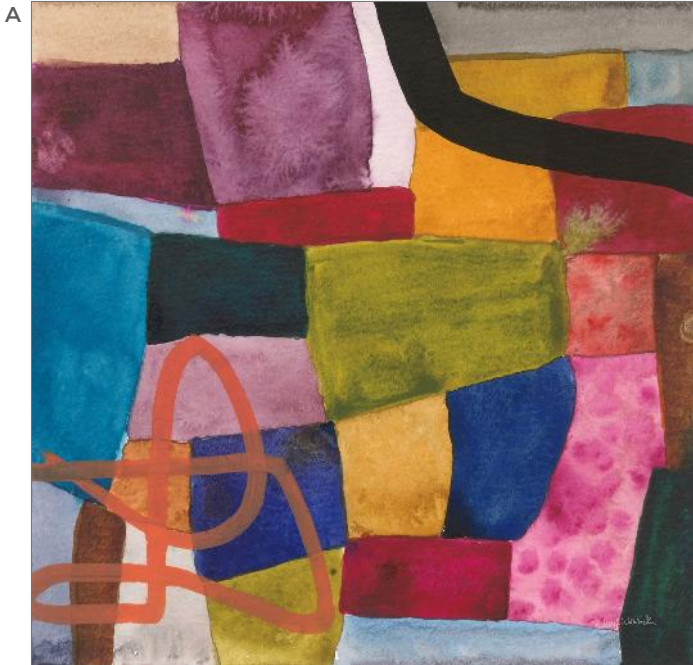
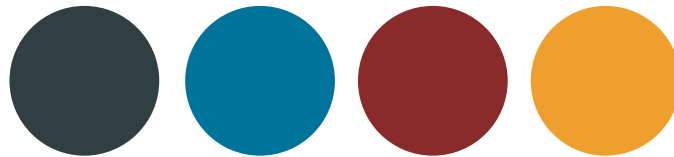


A: 87452 PLAYFUL I | B: 87453 PLAYFUL II  
WELLINGTON STUDIO

C: 86915 CROTON | D: 86916 ORCHARD  
MEGAN GALLAGHER

# earthy abstracts

In the evolving realm of abstract art, a fresh wave is emerging that dials back on the intensity without compromising vibrancy. New creations bathed in earthy, muted tones are captivating art enthusiasts globally. These pieces, while still colorful, adopt a more restrained palette, emphasizing simplified compositions.



A: 86970 FREEWAY V | B: 86971 FREEWAY VI  
C: 86968 III | D: 86969 FREEWAY IV  
CHERYL WARRICK



A



B







C



D



E



A: 87350 BITS AND BOBS I | B: 87351 BITS AND BOBS II  
C: 87352 BITS AND BOBS III | D: 87353 BITS AND BOBS IV  
SARA ZIEVE MILLER

E: 87349 PEAK FORM  
PAMELA MUNGER

A



B



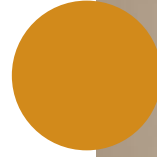
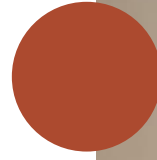
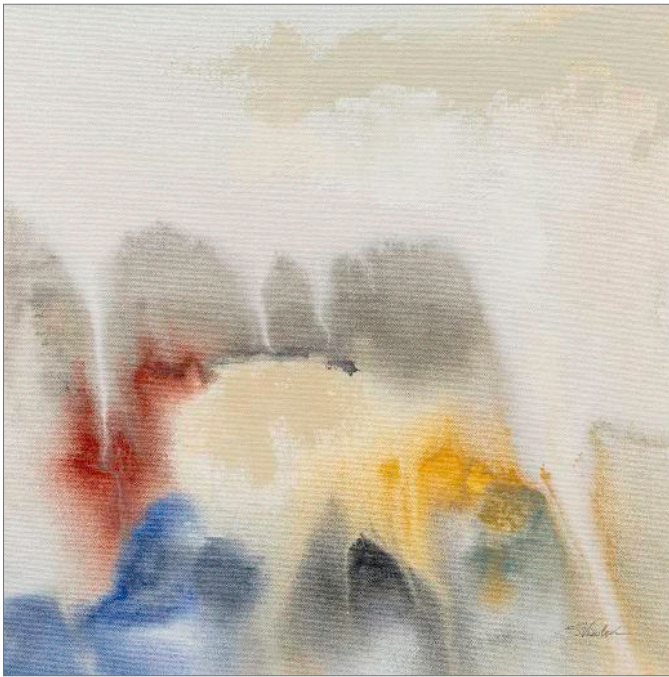


C

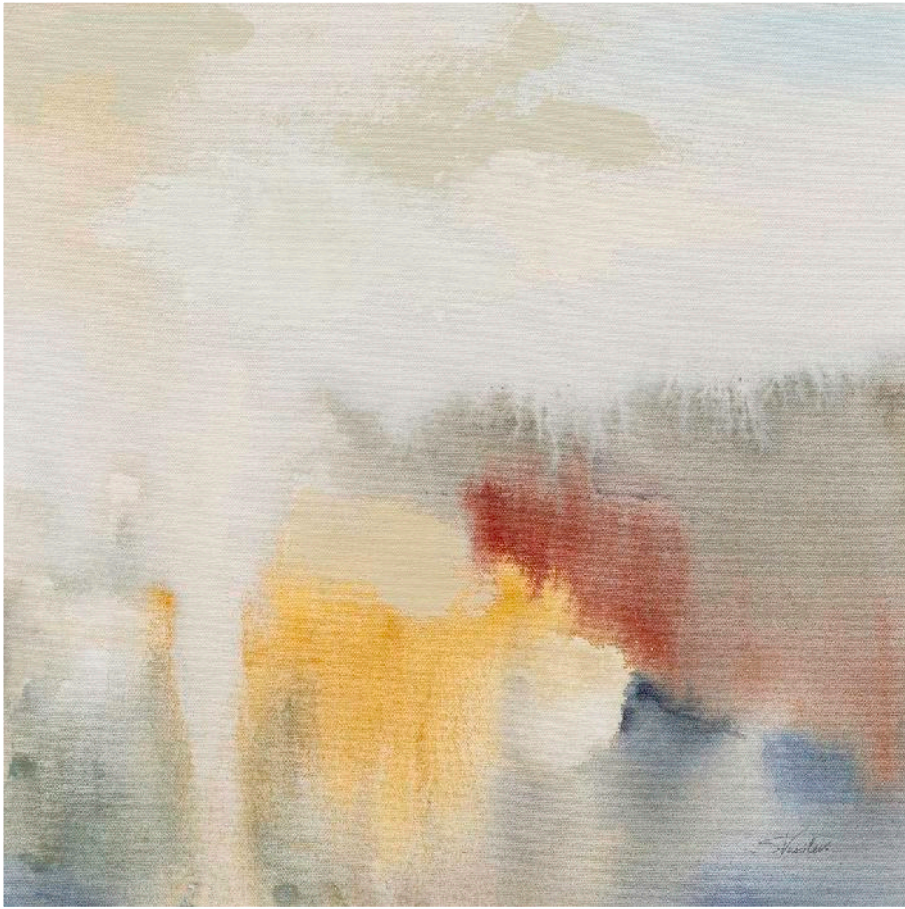


A: 87408 SUNNY SKY I  
B: 87409 SUNNY SKY II  
C: 87403 CROSSING THE RIVER  
SILVIA VASSILEVA

A



B



A: 87416 ANCIENT RUINS I | B: 87417 ANCIENT RUINS II  
C: 87407 FALL SUNRISE  
SILVIA VASSILEVA



C





B



A



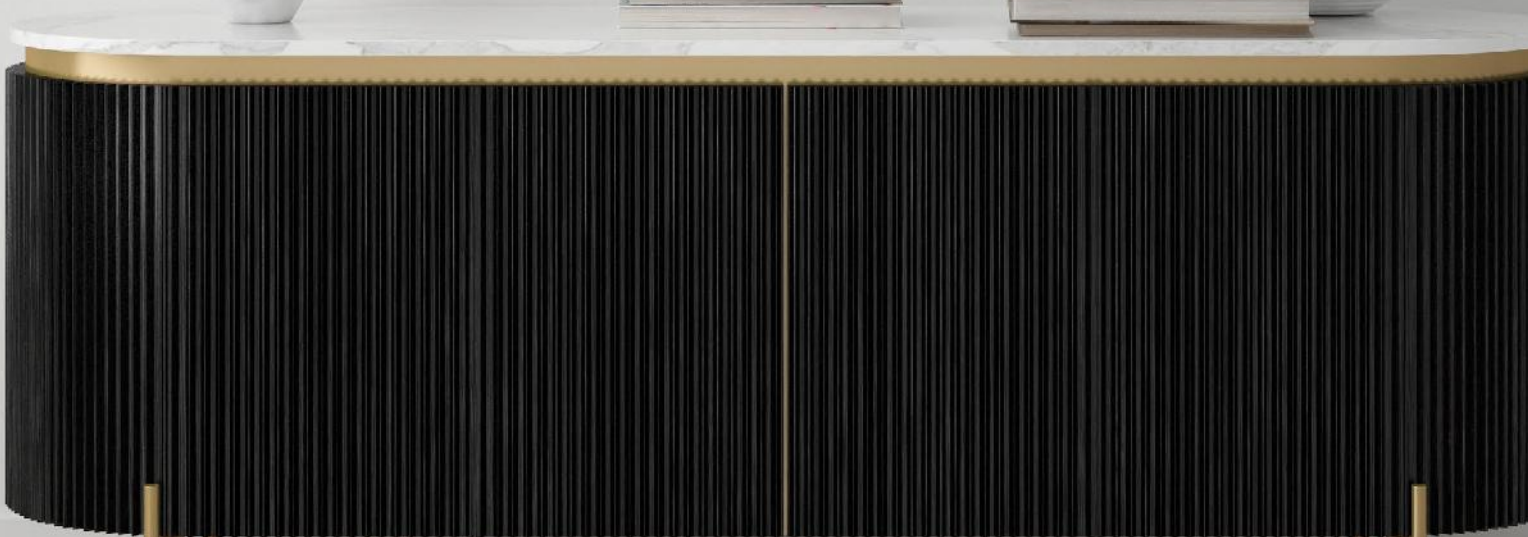
A: 86978 AT ATTENTION | B: 86977 LANDSCAPE WITH PYRAMID  
MIKE SCHICK

A: 87384 HANDCRAFTED II | B: 87383 HANDCRAFTED I  
WILD APPLE PORTFOLIO

C



D

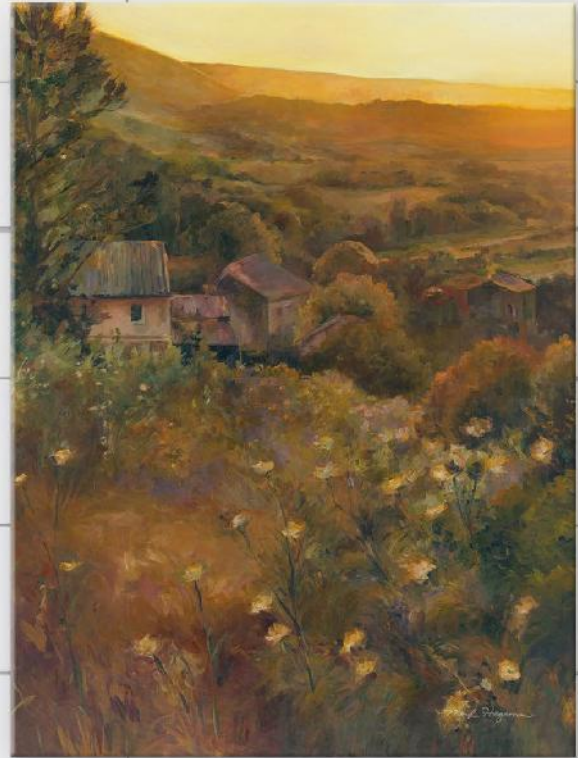


# colors of fall

These artworks are more than just representations; they're an emotive journey. They resonate with the introspective nature of the season, capturing the melancholic beauty of fleeting moments and the promise of cozy days ahead. With every brushstroke, they evoke feelings of nostalgia, reflection, and the warmth of fall goodness.

A: 38856 SOUTH FRANCE  
B: 38857 LAVENDER FIELDS  
C: 21451 OVERLOOKING THE VALLEY  
MARILYN HAGEMAN

A

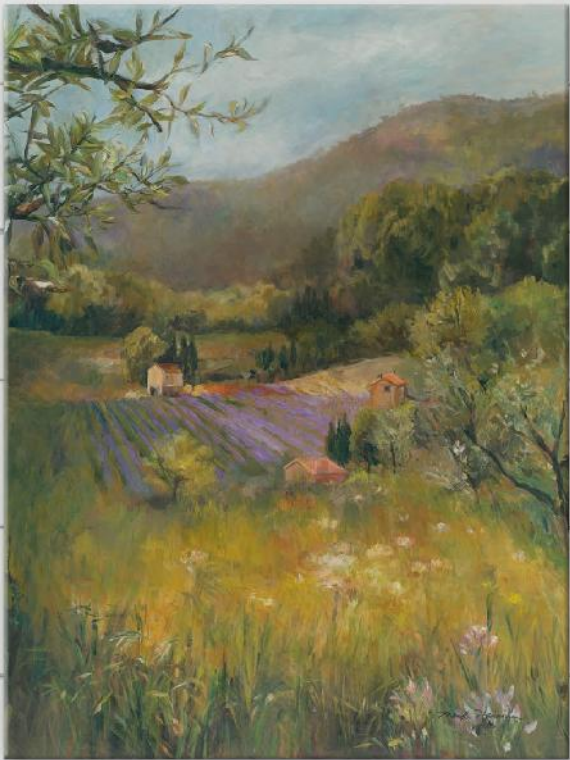


C





B



A



B

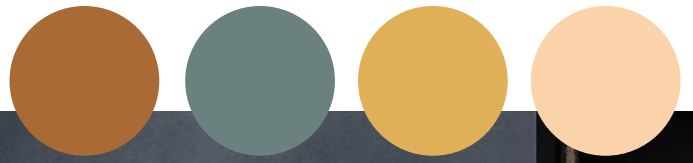


A: 87348 STORM OVER BUCKHORN

B: 87347 TURNING

PAMELA MUNGER





A

A: 83486 OCTOBER GARDEN  
DANHUI NAI

B: 83537 WESTERN SKY  
SILVIA VASSILEVA

B







C



D



A: 87420 SCANDINAVIAN FLORAL I | B: 87421 SCANDINAVIAN FLORAL II  
SILVIA VASSILEVA

C: 87335 BOTANICAL BEAUTY I | D: 87336 BOTANICAL BEAUTY II  
JULIA PURINTON



# be still

The art of still life holds timeless appeal. Ranging from muted, refined palettes to vivid, lively hues, these paintings capture the essence of life's simple, elegant moments. Perfectly suited for any space, they exude a sophistication that speaks across generations.

A: 87339 AMBER AUTUMN  
JULIA PURINTON

B: 83581 SCENTED CUTTING NEUTRAL SQ  
DANHUI NAI



B





87093 CURIOUS  
JEANETTE VERTENTES



87094 BLUE BLOOM  
JEANETTE VERTENTES



86841 FLORAL BEAUTY IV  
CHERYL WARRICK



86839 FLORAL BEAUTY II  
CHERYL WARRICK



87092 PRAGMATIC  
JEANETTE VERTENTES

# explore more art

SILVIA VASSILEVA



87401 FIRE FLOWERS



84524 LUSH BOUQUET  
SILVIA VASSILEVA

SILVIA VASSILEVA



83515 FLOWERS IN  
MAY I



83516 FLOWERS IN  
MAY II

KRISTY RICE



87592 CACTUS I



87593 CACTUS II

CHERYL WARRICK



86972 SPRING JOY I



86975 SPRING JOY IV



86973 SPRING JOY II



86974 SPRING JOY III





87467 BLOOMING ROSES  
KRISTY RICE



KRISTY  
RICE

---

*Kristy Rice wears many hats: entrepreneur, mama, celebrity invitation designer, stylist – but her first love is watercolor painting. From her 40 acre farm in Pennsylvania, Kristy paints watercolor flowers, bold patterns and expressive landscapes that combine textural realism with a distinctive juicy boldness.*

KRISTY RICE



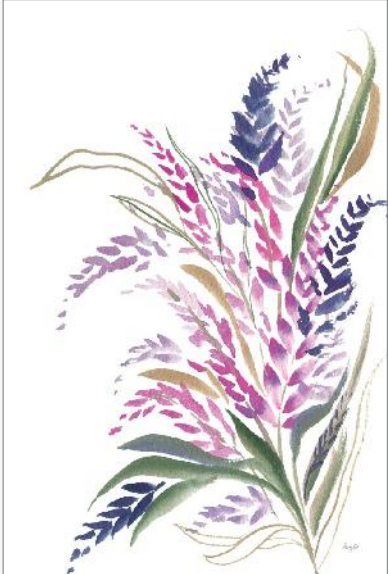
87591 BLOOMING WILD

KRISTY RICE



87466 WILD IRIS

KRISTY RICE



87464 LAVENDER BOUQUET



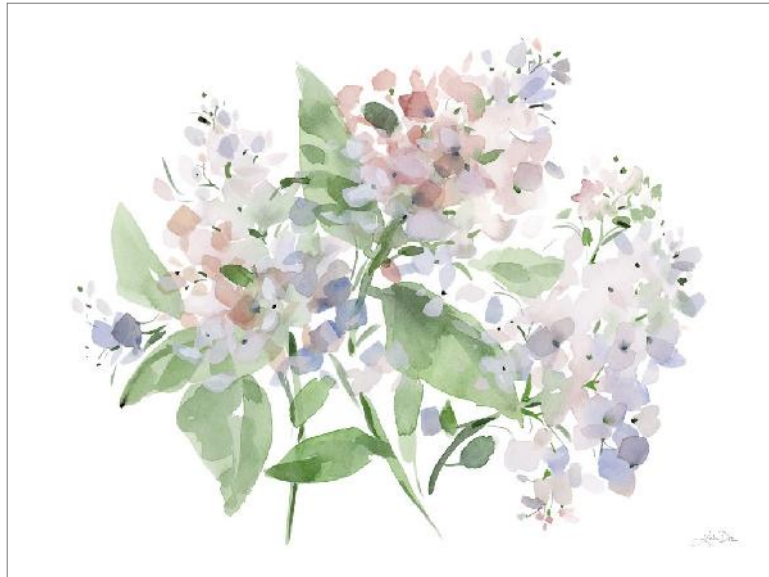
87465 LAVENDER LOVE

KATRINA PETE



87623 SERENE HYDRANGEA

KATRINA PETE



87624 PASTEL PETALS

CHERYL WARRICK



86962 SUNDAY GARDEN I



86963 SUNDAY GARDEN II

CHERYL WARRICK



86964 FEELING BLUE I



86965 FEELING BLUE II

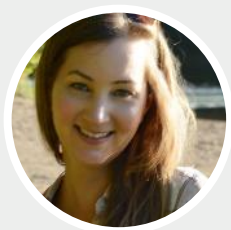
KATRINA PETE



87369 ELEGANT HYDRANGEA



87368 SPRING COTTAGE HYDRANGEAS



KATRINA  
PETE

*Katrina Pete's artwork is a collection of inspired mementoes from her garden, woodland walks, and outdoor adventures with her family. Painting since childhood, she loves incorporating natural elements and light into her watercolor paintings. Her beautiful collections are created with a loose technique that allows the paint to do what it does best, flow and bloom and fade into other colors on the page.*

SILVIA VASSILEVA



83504 CLOUD OVER THE LAKE I



83505 CLOUD OVER THE LAKE II

JULIA PURINTON



82570 WAVES AT MIDMORNING

JEANETTE VERTENTES



84158 COASTAL VIEW

SILVIA VASSILEVA



82624 WHITE RIVER



SILVIA  
VASSILEVA

*Silvia Vassileva pursued her love of art at the Academy of Fine Art in Bulgaria, where she earned both her bachelors and masters degrees. She spent six years painting and exhibiting her work in Japan before moving to the U.S. Silvia describes her style as very free and bold. She makes her paintings come alive by using contrast and unusual color palettes. Silvia's home studio, which she designed herself, is bright, contemporary and minimalist.*



SILVIA VASSILEVA



87399 DUNES

SILVIA VASSILEVA



87400 PACIFIC COAST

CHRIS PASCHKE



83102 LAKE FOG II

CHRIS PASCHKE



83104 MOUNTAIN MIST II

CHRIS PASCHKE



83101 LAKE FOG I

CHRIS PASCHKE



83103 MOUNTAIN MIST I



87264 MIDSUMMER MEADOW

KATRINA PETE

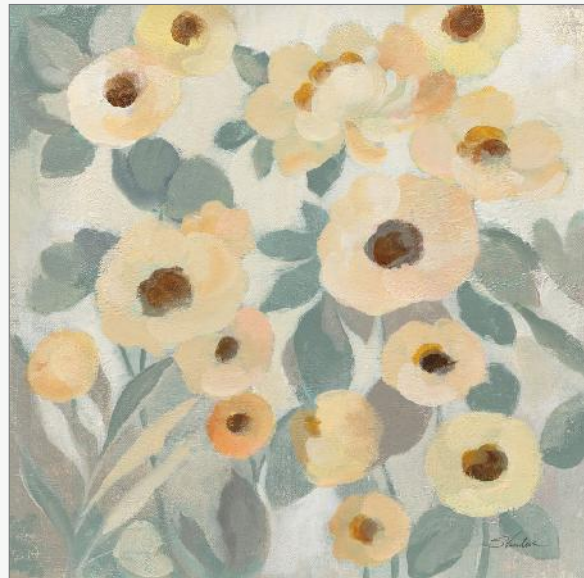


87265 AFTERNOON BOUQUET

SILVIA VASSILEVA



87418 BREEZY FLOWERS I



87419 BREEZY FLOWERS II

CHRIS PASCHKE



87322 INCISED BLUE I



87323 INCISED BLUE II

CHRIS PASCHKE

DANHUI NAI



87328 INCISED  
WALNUT GOLD I



87329 INCISED  
WALNUT GOLD II



86542 WHISPER ABSTRACT

CHRIS PASCHKE



84546 REFINED MINIMAL II



84547 REFINED MINIMAL III

A: 86793 URBAN RAINBOW I  
B: 86794 URBAN RAINBOW II  
C: 86795 URBAN RAINBOW III  
D 86796 URBAN RAINBOW IV  
CHRIS PASCHKE



CHRIS  
PASCHKE

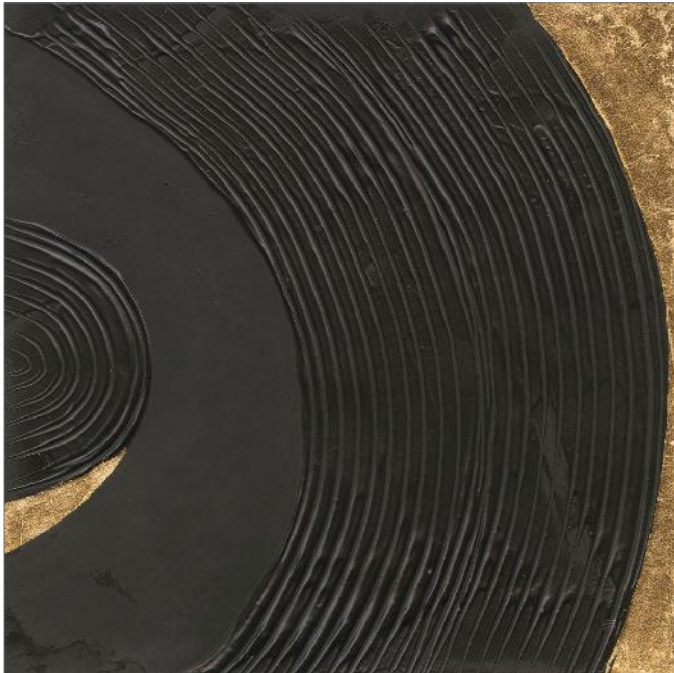
---

*Chris Paschke is an internationally accomplished artist and calligrapher. Her fascination with Eastern and Western art has been a lifelong study. She has studied with European master calligraphers in Belgium, Germany, Austria and Russia. Her art is abstractly interpretive as she uses assorted mediums, collaged paper and accents of gold leaf to achieve her work.*





CHRIS PASCHKE



86803 BLACK ON BLACK I



86804 BLACK ON BLACK II

CHRIS PASCHKE



86827 BOLD GOLD  
TALL I



86828 BOLD GOLD  
TALL II



86829 BOLD GOLD  
TALL III



86830 BOLD GOLD  
TALL IV

CHRIS PASCHKE



86831 URBAN GOLD I



86832 URBAN GOLD II

CHRIS PASCHKE

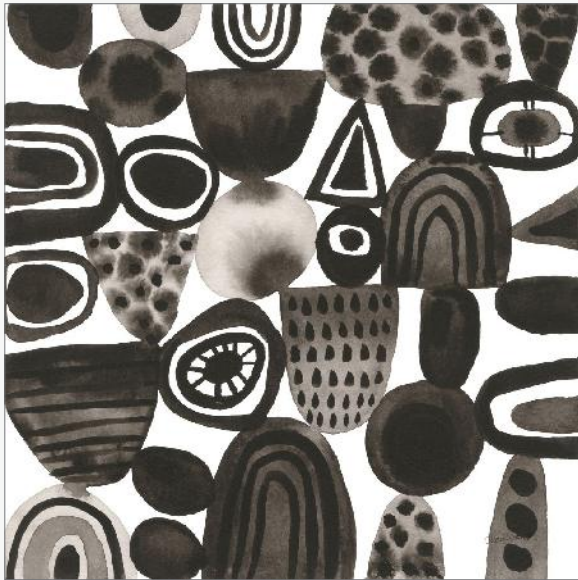


86817 BOLD GOLD VII

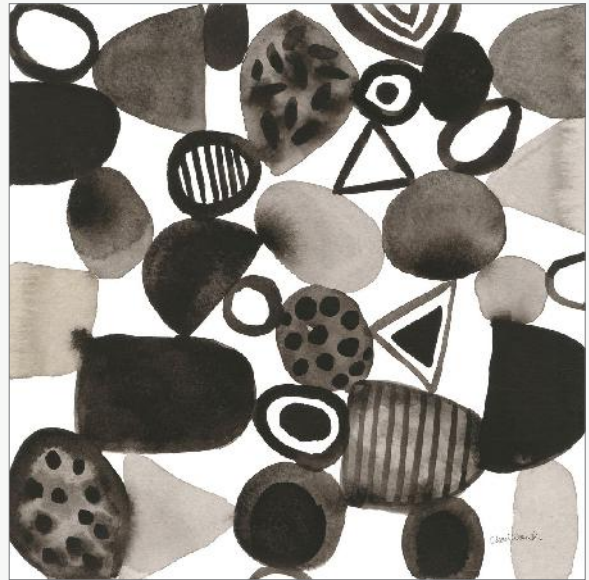


86818 BOLD GOLD VIII

CHERYL WARRICK

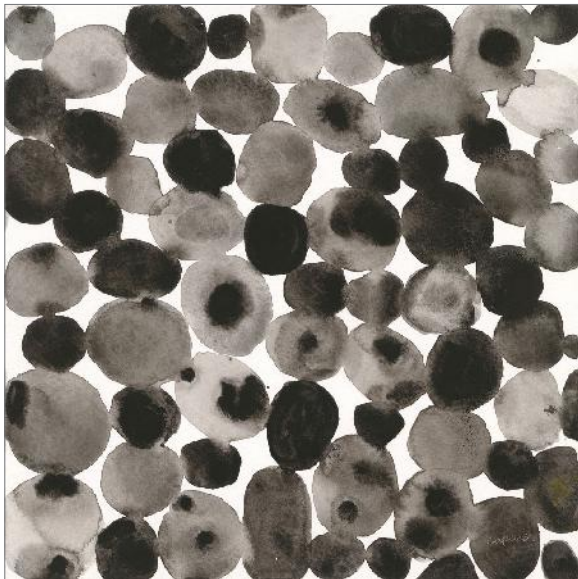


86956 QUIRKY I

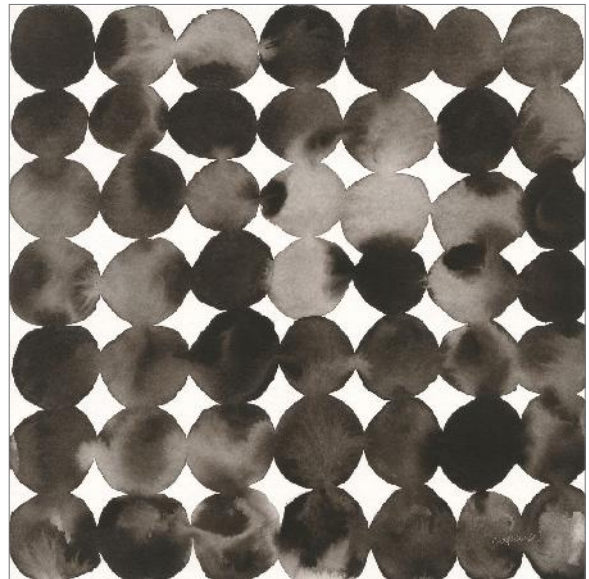


86959 QUIRKY IV

CHERYL WARRICK

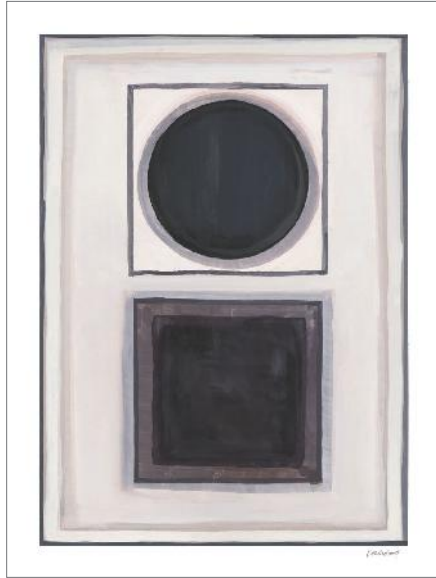


86961 SEEING SPOTS II

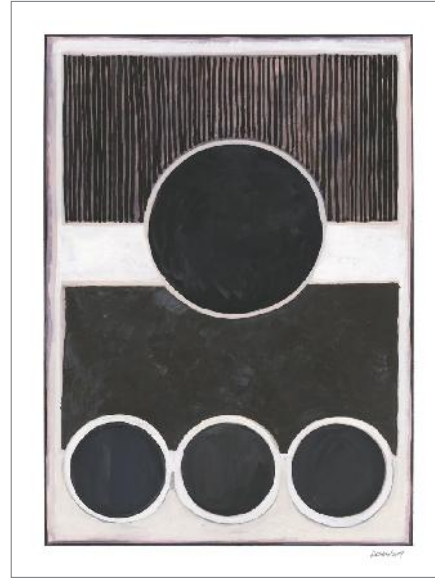


86960 SEEING SPOTS I

KATHRINE LOVELL



86863 BENTO V



86864 BENTO VI



86859 BENTO I



86862 BENTO IV



86861 BENTO III



*Kathrine Lovell*

NATHAN LARSON



87637 CARVING DETAIL BW



LAURA MARSHALL



84131 MOKE LAKE HORSES III



84132 MOKE LAKE HORSES IV

NATHAN LARSON



87638 MOUNTAIN MEMORIES

A: 84041 TRAIN I  
B: 84042 TRAIN II  
ALAN MAJCHROWICZ



ALAN  
MAJCHROWICZ

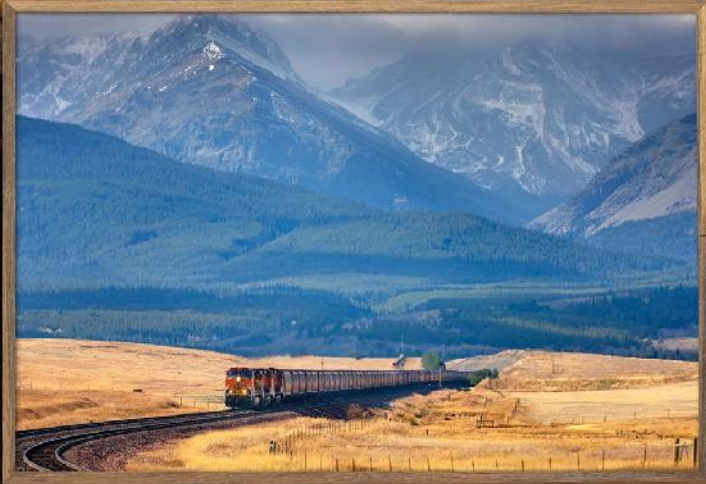
---

*Wilderness photographer Alan Majchrowicz is fortunate to be able to combine his passion for the outdoors with his profession. Born, raised and educated in the midwest, Alan felt the call of the Pacific Northwest and moved there in 1980. He travels widely with backpack and camera to find the out-of-the-way places that appear in his extraordinary photographs.*

A



B





## VISITANOS Y CONTÁCTANOS

-  [www.facebook.com/artgallery.mexico](http://www.facebook.com/artgallery.mexico)
-  [www.instagram.com/artgallerymexico/](http://www.instagram.com/artgallerymexico/)
-  [www.pinterest.com/artgallerymex/](http://www.pinterest.com/artgallerymex/)
-  [www.twitter.com/artgallerymex](http://www.twitter.com/artgallerymex)