

# *art* **DECOR**

JANUARY 2024 | WALL DECOR





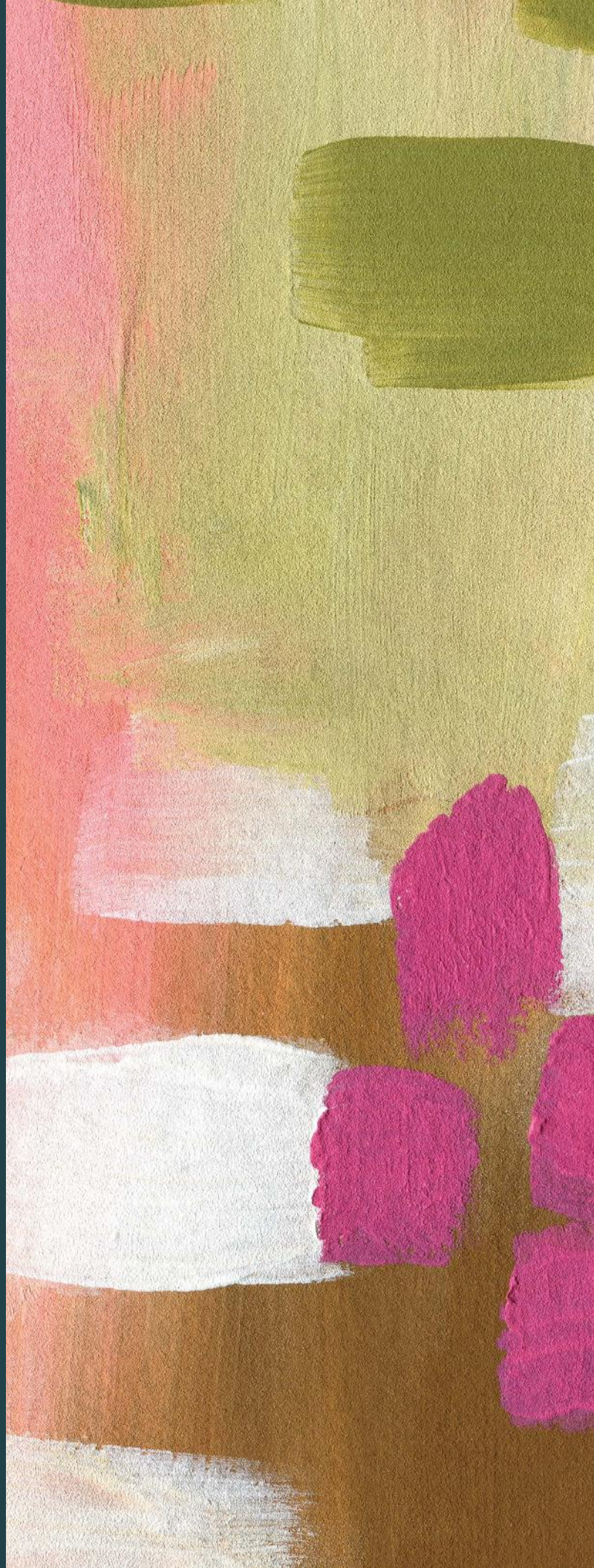
## NUESTRAS OBRAS Y CUADROS SON PERSONALIZADOS

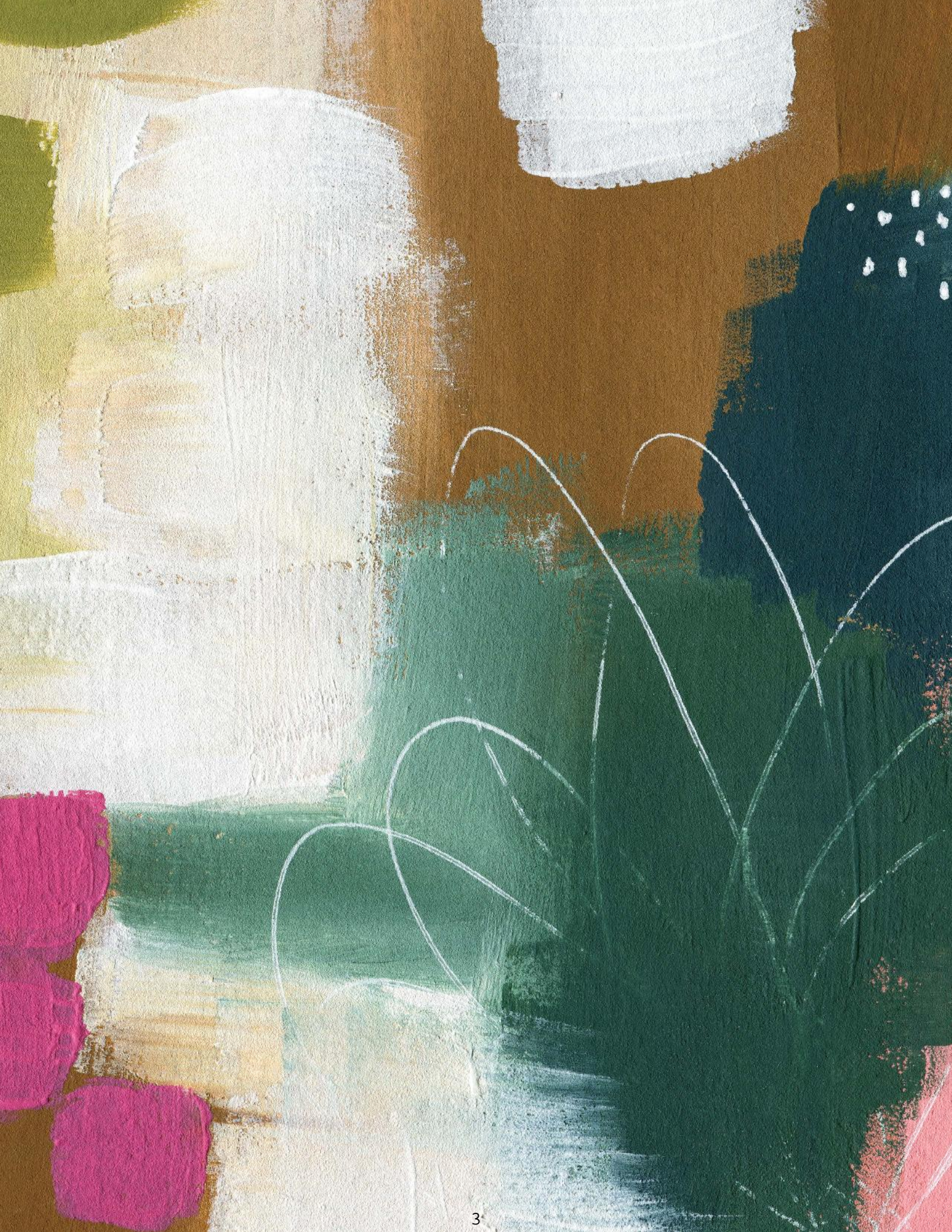
Todas las imágenes de este catálogo están disponibles para impresión en el tamaño que lo desees. Dependiendo del tipo de enmarcado que elijas, se pueden imprimir en litografía (papel) o Canvas (lienzo).

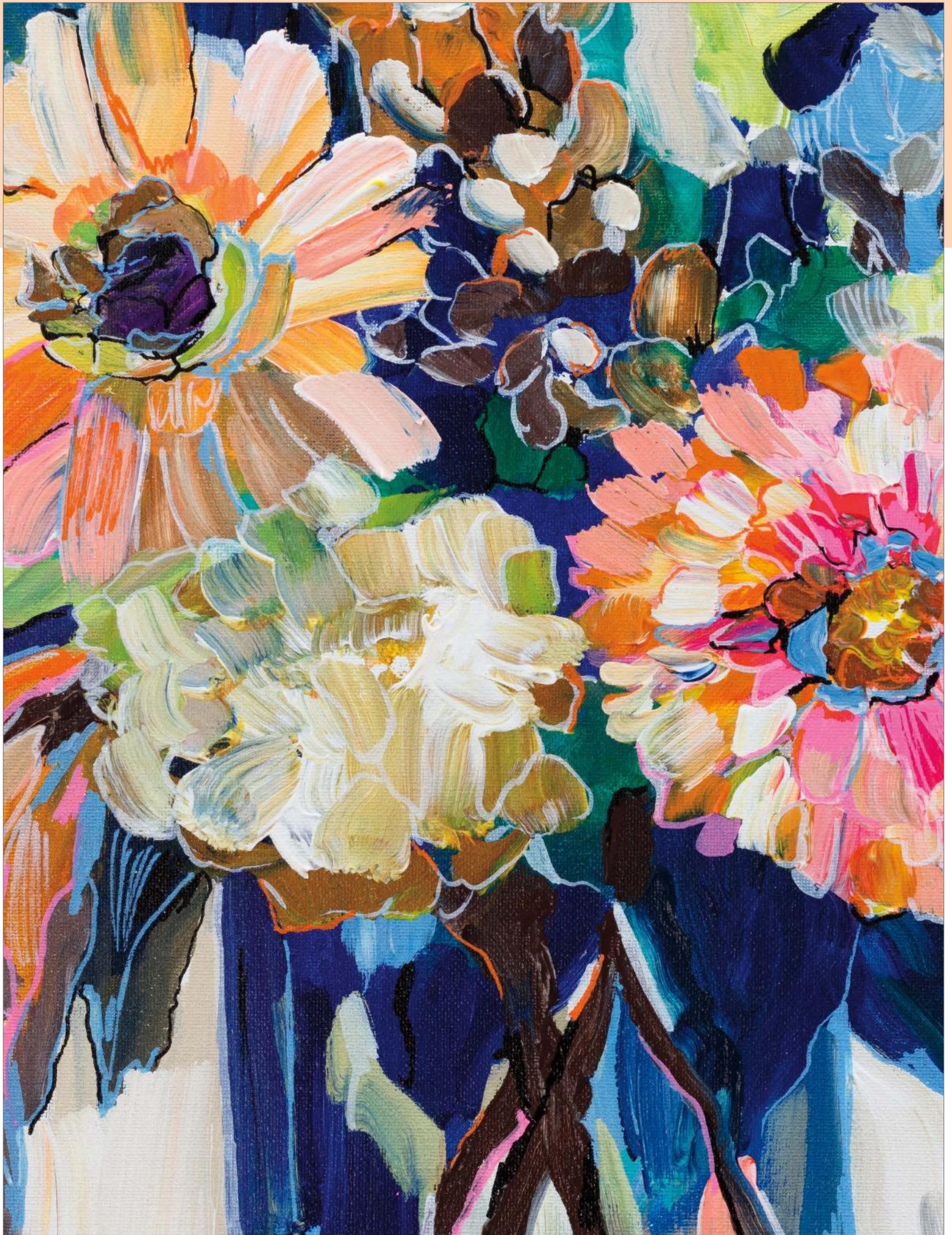
También las enmarcamos a tu gusto y te asesoramos en todo el proceso

Visítanos y contáctanos:

-  [www.facebook.com/artgallery.mexico](https://www.facebook.com/artgallery.mexico)
-  [www.instagram.com/artgallerymexico/](https://www.instagram.com/artgallerymexico/)
-  [www.pinterest.com/artgallerymex/](https://www.pinterest.com/artgallerymex/)
-  [www.twitter.com/artgallerymex](https://www.twitter.com/artgallerymex)







# be bold

*It's all about embracing boldly designed prints, strong colors, and the latest trending styles to inject a pop of personality and style into any space. This art is meant to be the centerpiece, perfect for anyone ready to energize their space.*



88418 HARVEST

88674 MAXIMALIST PEACOCK

88647 SUMMER BOUNTY

87973 BUT MOM DOESN'T LIKE GRAFFITI

88304 MOON GIRL I



INTRODUCING YVETTE ST. AMANT

# ARTISTIC HARMONY

INSPIRED BY NATURE

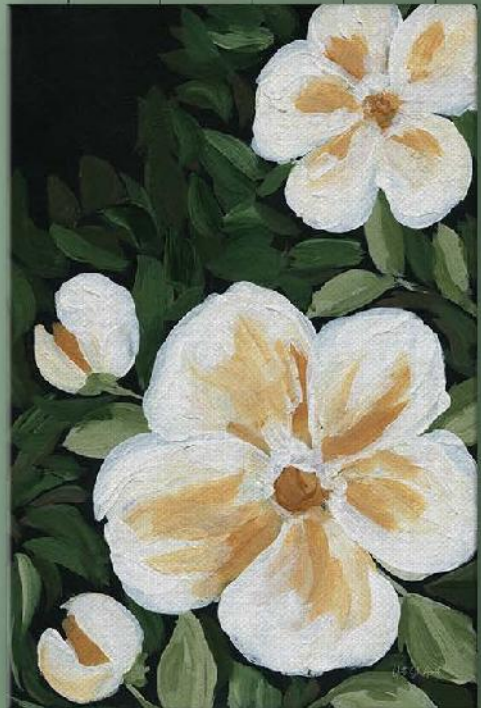
*Yvette St. Amant, a French-Canadian born artist, is well known for producing a variation of unique styles with her diverse techniques. Through her online art courses and social media, she inspires and teaches thousands of aspiring artists. Raised on a lake surrounded by wilderness, she is deeply connected to nature and water. Her style is a fusion of culture, nature, and personality, strongly influenced by interior design, and trend forward colors.*



A



B



C

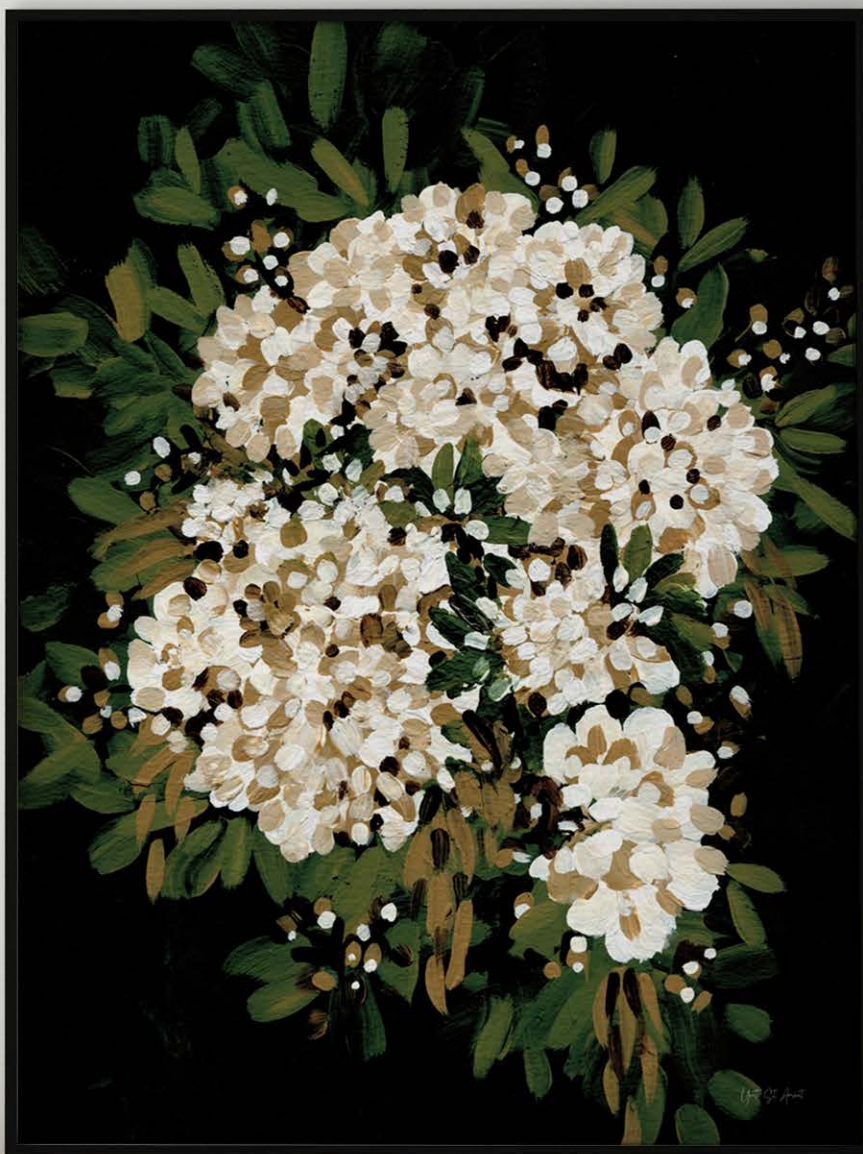


A: 88737 ENCHANTED FLORALS I  
 B: 88738 ENCHANTED FLORALS II  
 C: 88744 MOODY GARDEN  
 D: 88743 MOODY FLORALS  
 YVETTE ST. AMANT



*Yvette, a French-Canadian gem now shining in the USA, brings a kaleidoscope of styles to our collection. Her art is a unique blend of culture, nature, and vibrant personality, deeply influenced by her love for interior design and trendsetting colors.*

D





*From drawing as a toddler to inspiring thousands through her online art courses, Yvette's journey is as colorful as her art. Raised amidst nature and water, her passion for the beach, tropics florals and creatures, is reflected in her creations.*



C

D

E

A: 88739 TROPICAL LEAF I | B: 88740 TROPICAL LEAF II | C: 88280 SUNFLOWERS  
D: 88196 TRANQUIL BLOSSOM II | E: 88195 TRANQUIL BLOSSOM I  
YVETTE ST. AMANT

A



B



C



D



- A: 88200 BLUE HERON
  - B: 88199 WHITE EGRET
  - C: 88202 THE WORLD IS YOUR OYSTER I
  - D: 88203 THE WORLD IS YOUR OYSTER II
  - E: 88211 SHARK EYE SHELL
  - F: 88212 LIGHTNING WHELK
- YVETTE ST. AMANT



E

F

# moody

*In this trend, colors play a pivotal role in setting the tone. The deep blacks and nuanced greys create a canvas of intrigue, while the muted colors add a layer of complexity and sophistication. This combination results in art that is not just seen but felt.*

A



A: 88742 FLORALS IN VASE | B: 88741 FLORALS IN GLASS  
YVETTE ST. AMANT

B



ART DECOR

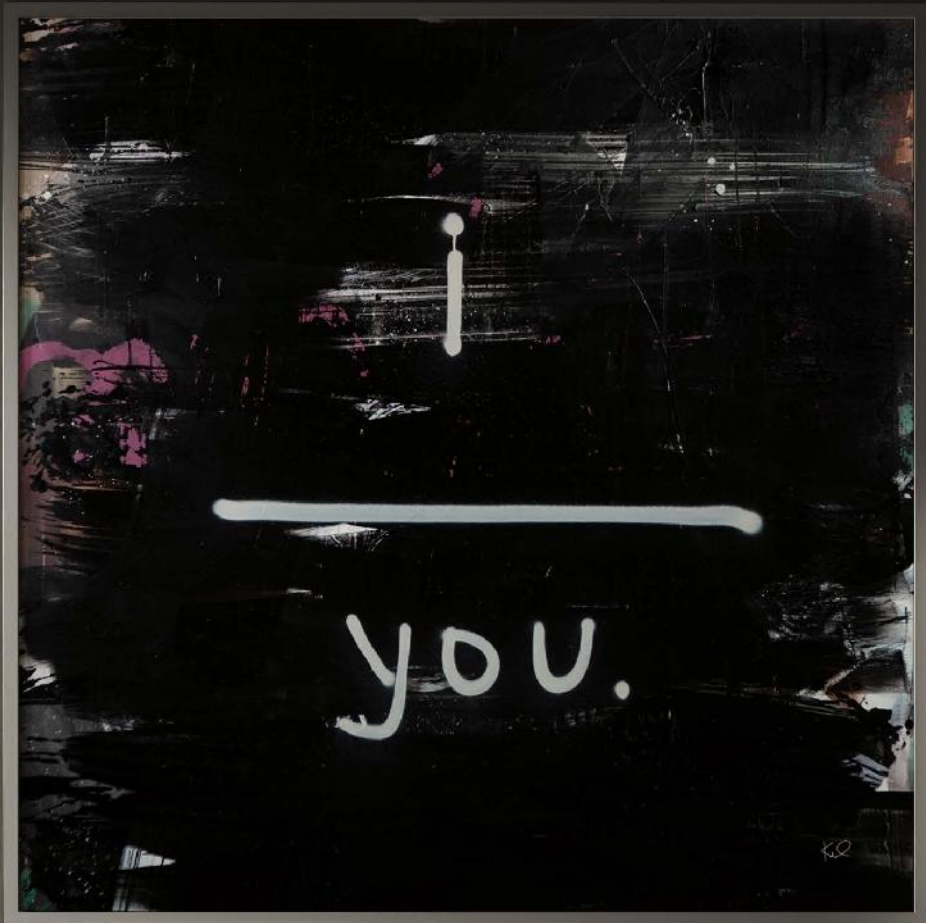


A: 87969 MOMS FAVORITE | B: 87972 HEY I LIKE YOU  
C: 87975 BIG LOVE | D: 87974 USE YOUR WORDS  
KENT YOUNGSTROM





D







A: 86294 FRESH VESSELS I | B: 86295 FRESH VESSELS II  
JULIA PURINTON

C: 86338 SIMPLE VESSELS I | D: 86339 SIMPLE VESSELS II  
DANHUI NAI

# bird brain

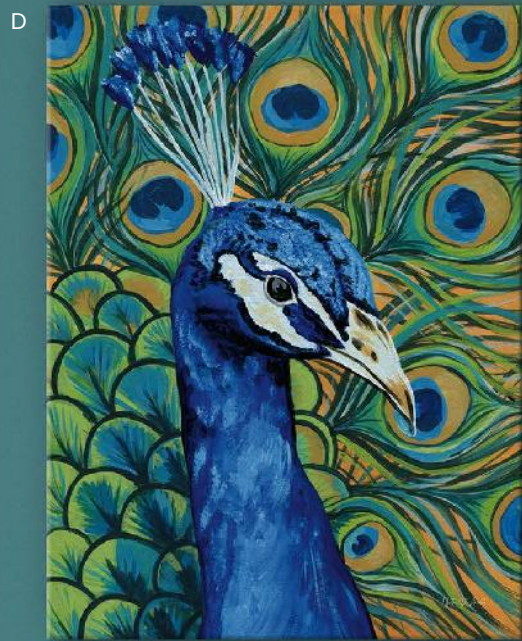
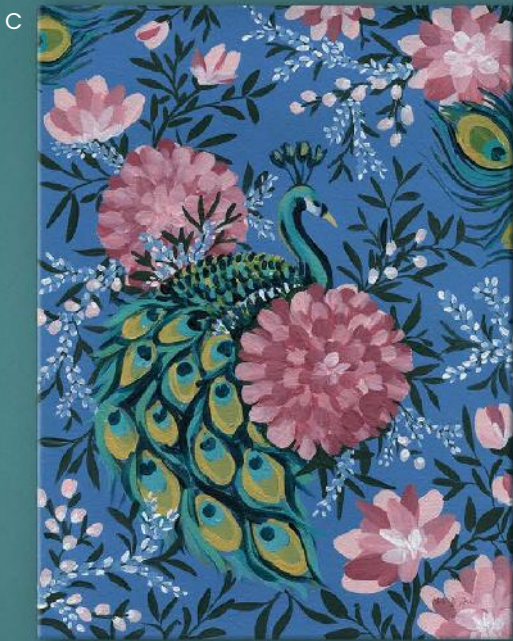
*With a lively palette of blues, greens, and pinks, these collections infuse any space with fun, lightening the mood and adding a touch of playfulness. Each piece is a mood lifter, transforming rooms into havens of joy and whimsy.*

A



B





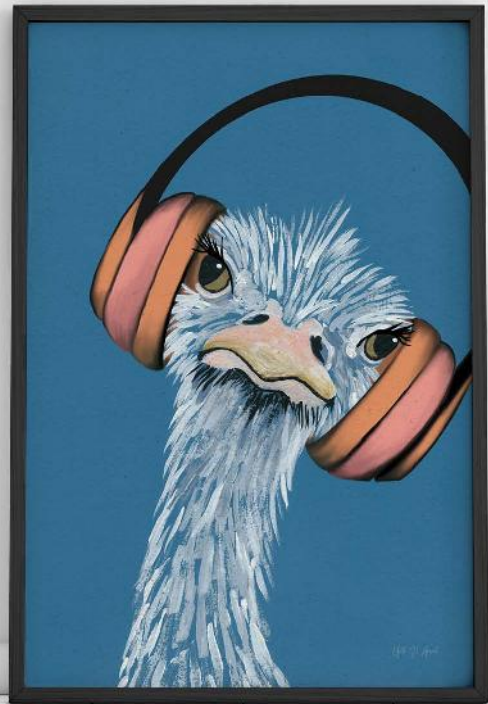
A: 88671 PRETTY PEACOCKS I | B: 88672 PRETTY PEACOCKS II | C: 88674 MAXIMALIST PEACOCK | D: 88673 PEACOCK PROFILE  
YVETTE ST. AMANT



86427 MAJESTIC BEAUTY III  
DAPHNE BRISSONNET



88716 WILD I  
YVETTE ST. AMANT



88717 WILD II  
YVETTE ST. AMANT



88718 WILD III  
YVETTE ST. AMANT



88719 WILD IV  
YVETTE ST. AMANT

# hipstor

A



B





iC

A trending design movement, Hipstoric artfully blends vintage and historical elements with contemporary design. It's defined by its creative juxtaposition of old and new, crafting a unique and eclectic aesthetic that is both nostalgic and modern, without being confined to a strict set of design rules.

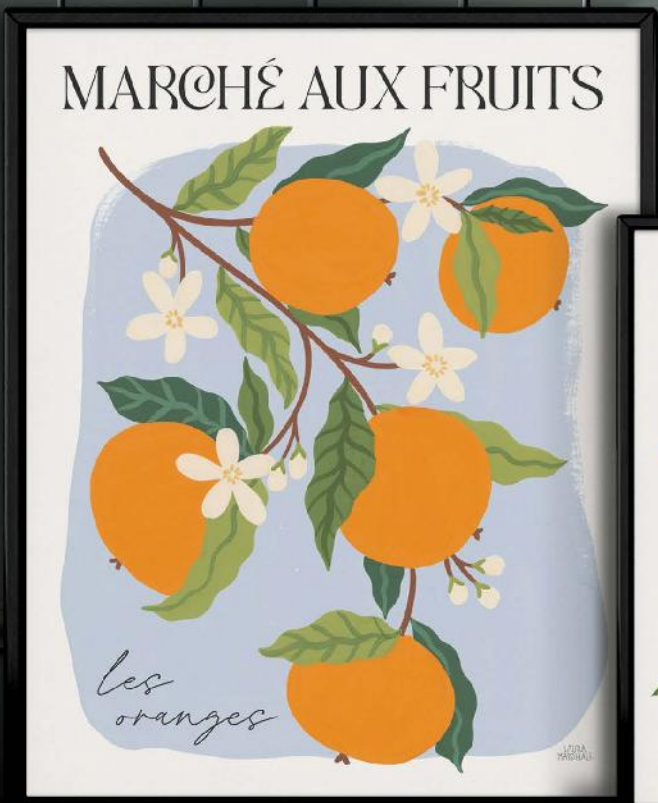


A: 85441 GODDESS II | C: 85440 GODDESS I  
MOIRA HERSHEY

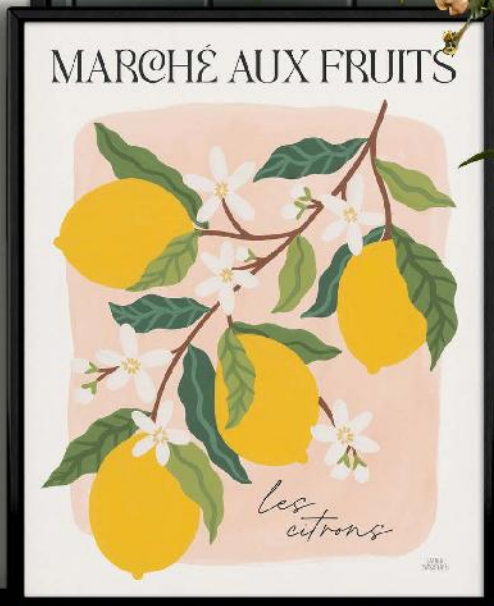
B: 88523 FINE ART VASE I | D: 88524 FINE ART VASE II  
JANELLE PENNER



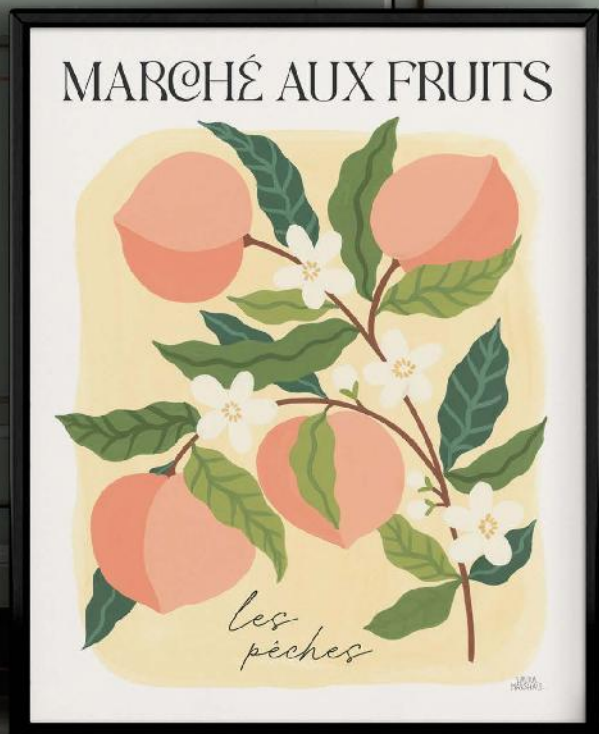
A



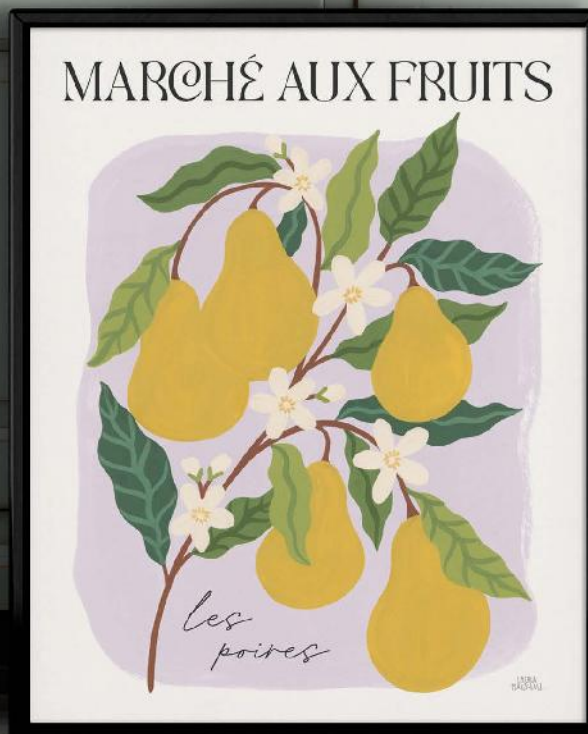
B



C

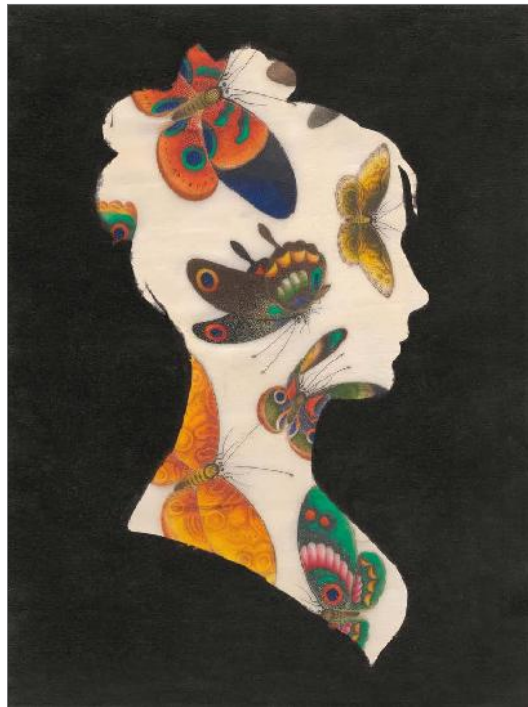


D

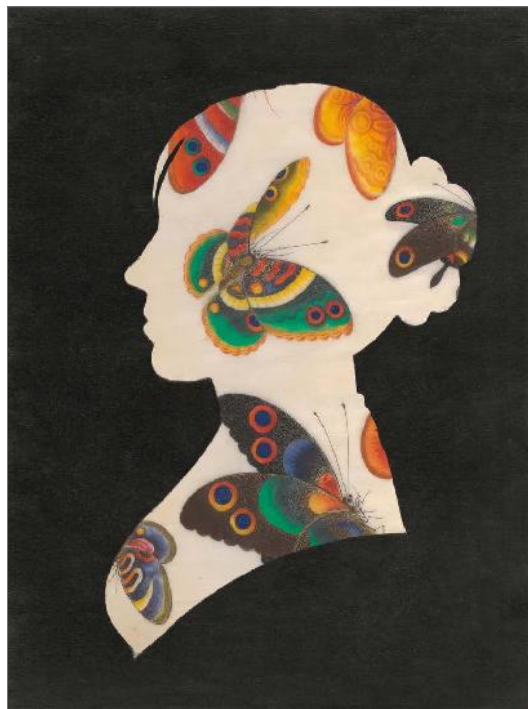




E



F



A: 88581 MARCHE AUX FRUITS I  
B: 88582 MARCHE AUX FRUITS II  
C: 88584 MARCHE AUX FRUITS IV  
D: 88583 MARCHE AUX FRUITS III  
LAURA MARSHALL

E: 88413 BUTTERFLY SILHOUETTE I  
F: 88414 BUTTERFLY SILHOUETTE II  
WILD APPLE PORTFOLIO

# wall flower

*This collection features mod florals in trending hues, offering a fresh and contemporary take on traditional flower motifs. Each piece is an exploration of artistic expression, playing with shapes and forms to create intriguing, stylized floral designs.*



A: 87928 TROPICAL TULIPS | B: 87927 HANDFUL OF DAISIES | C: 87929 COLOR YOUR LIFE  
MEGAN GALLAGHER

c





A: 88306 CRESTED BUTTE PROFUSION  
SHIRLEY NOVAK

B: 88446 VINTAGE GARDEN  
SILVIA VASSILEVA

C: 88492 STARSHINE MANDALA III  
D: 88490 STARSHINE MANDALA I  
CANDRA BOGGS

B



C



D





A

B



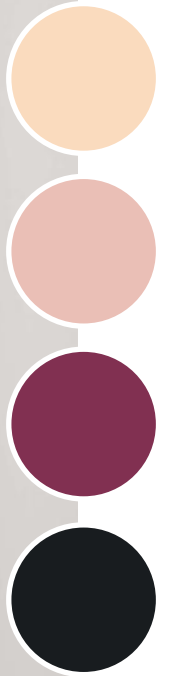


C



A: 87865 AUTUMN ORIENTALS VIGNETTE I  
B: 87866 AUTUMN ORIENTALS VIGNETTE II  
C: 87863 MORE THAN A LITTLE BREEZY  
SHIRLEY NOVAK

A



# free flow

*This collection is all about breaking boundaries and exploring the endless possibilities of form and texture. It's where flowing lines meet thoughtful layering, culminating in artworks that are nothing short of modern masterpieces.*

A: 87973 BUT MOM DOESN'T LIKE GRAFFITI | B: 87985 LOVE ON STEROIDS II  
KENT YOUNGSTROM

B



A



B





A: 87926 ARTIFACT II | B: 87925 ARTIFACT I  
MIKE SCHICK

A: 88301 ORGANIC ABSTRACT II | B: 88302 ORGANIC ABSTRACT III  
C: 88303 ORGANIC ABSTRACT IV | D: 88300 ORGANIC ABSTRACT I  
BECKY THORNS

# explore more art

YVETTE ST. AMANT



88213 VINTAGE ROLLING HILLS



88201 ABSTRACT LANDSCAPE



88198 VINTAGE LANDSCAPE MOUNTAINSIDE  
YVETTE ST. AMANT



88342 TREETOPS I



76356 NEUTRALSCAPE II

CHRIS PASCHKE



76355 NEUTRALSCAPE I



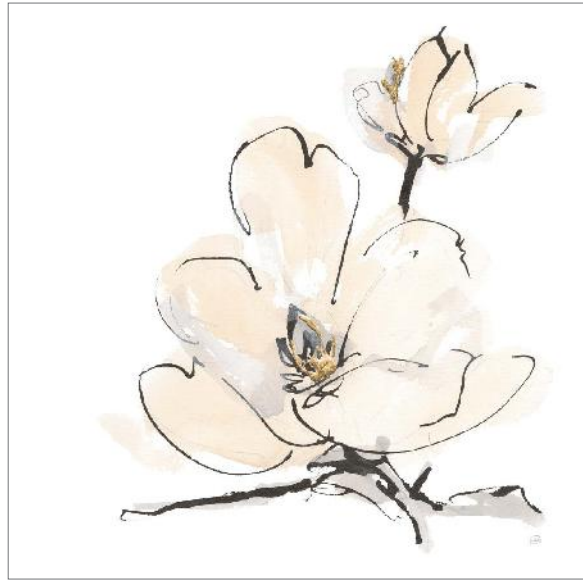
88343 TREETOPS II



CHRIS PASCHKE



88344 GREIGE MAGNOLIAS I



88345 GREIGE MAGNOLIAS II

CHRIS PASCHKE



88090 POWER HORSE I



88091 POWER HORSE II

SILVIA VASSILEVA



88443 ORIGAMI STYLE

SILVIA VASSILEVA



88442 LIGHT AND SHADOW

SILVIA  
VASSILEVA

*Silvia Vassileva pursued her love of art at the Academy of Fine Art in Bulgaria, where she earned both her bachelors and masters degrees. She spent six years painting and exhibiting her work in Japan before moving to the U.S. Silvia describes her style as very free and bold. She makes her paintings come alive by using contrast and unusual color palettes. Silvia's home studio, which she designed herself, is bright, contemporary and minimalist.*

NATHAN LARSON



88239 MOUNTAINOUS I

NATHAN LARSON



88240 MOUNTAINOUS II

NATHAN LARSON



88241 MOUNTAINOUS III

NATHAN LARSON



88242 MOUNTAINOUS IV



88237 TALL GRASS BIRD PERCH  
NATHAN LARSON



NATHAN  
LARSON

*Nathan Larson is a Vermont-based photographer and chocolate consumer. For over 20 years he has created work that ranges from fine art photography to landscapes, abstracts, wildlife, and mixed media. He enjoys collaborating with clients to produce the perfect images for their projects and believes the world is a better place with more art in it. "I still use my first camera, though I have added some tools along the way, and I'm still seeking new ways to share visual stories with my audience."*

NATHAN LARSON



87948 BISON STARE BW



88244 WHITE SANDS NEUTRAL

YVETTE ST. AMANT



88559 CALM SEASCAPE DUSK

CHRIS PASCHKE



88358 ALTERED SEASCAPE III



88359 ALTERED SEASCAPE IV



YVETTE ST. AMANT



88558 STORMY SEA

DANHUI NAI



88192 RAIN IN GRAY AND BLUE

JULIA PURINTON



88402 ADRIFT



88395 REFLECTIONS

NATHAN LARSON



88471 PACIFIC AFTERNOON II



88474 PACIFIC AFTERNOON V

DANHUI NAI



88416 MISTY FOREST IN GRAY AND GOLD

JULIA PURINTON



88400 THE POINT

JULIA PURINTON



88396 CLOUDSCAPE

PAMELA MUNGER



88432 SEPTEMBER GREEN

82785 GENTLE WORLD II  
DANHUI NAI



DANHUI  
NAI

---

*Danhui Nai was born in mainland China and raised in an artistic household with her sculptor father and painter mother. Her natural passion for art was guided through classical training which she applies in her California studio to create beautiful, on-trend artwork in a variety of media. She studied interior design later in Paris and New York City. She worked in the textile industry in Manhattan, where she continued her studies and artistic development.*



JULIA PURINTON



88399 SUMMER GLOW

JULIA PURINTON



88401 WHITE OAK POND

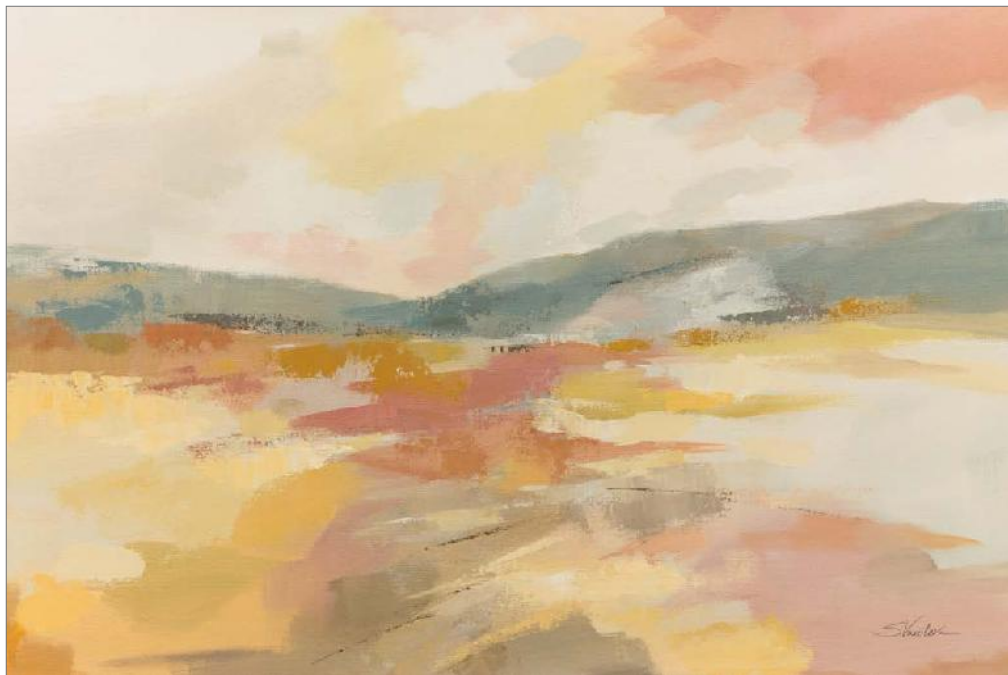


DANHUI NAI



88417 LANDSCAPE IN YELLOW OCHRE

SILVIA VASSILEVA



88440 HONEYBLOOM MEADOW



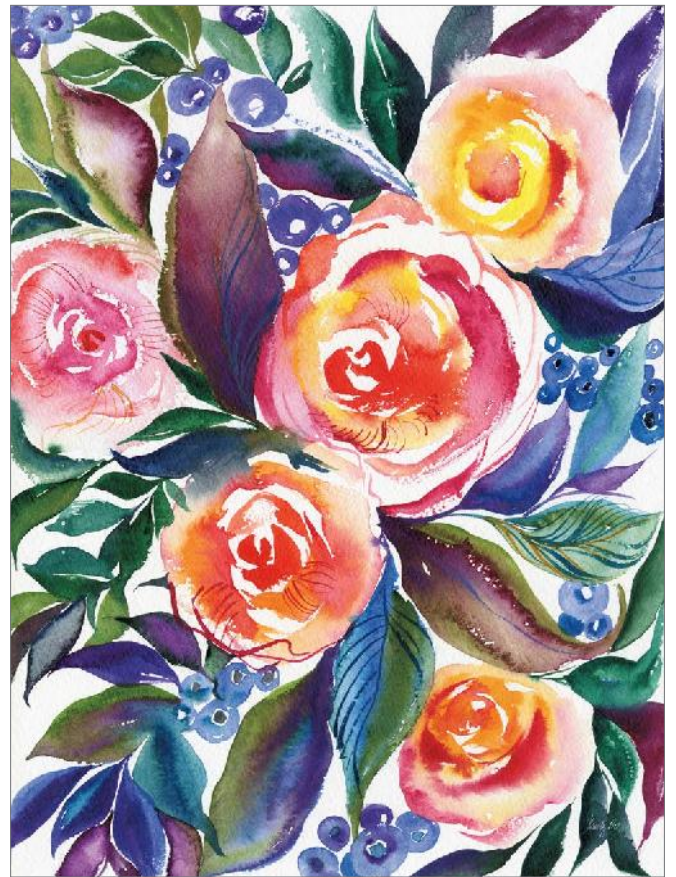
88647 SUMMER BOUNTY



88418 HARVEST  
JEANETTE VERTENTES



88419 VIVID FALL  
JEANETTE VERTENTES



88427 ROSE TRIO  
KRISTY RICE

KRISTY RICE



88704 BLOOMING FREE



KRISTY RICE

*Kristy Rice wears many hats: entrepreneur, mama, celebrity invitation designer, stylist – but her first love is watercolor painting. From her 40 acre farm in Pennsylvania, Kristy paints watercolor flowers, bold patterns and expressive landscapes that combine textural realism with a distinctive juicy boldness.*

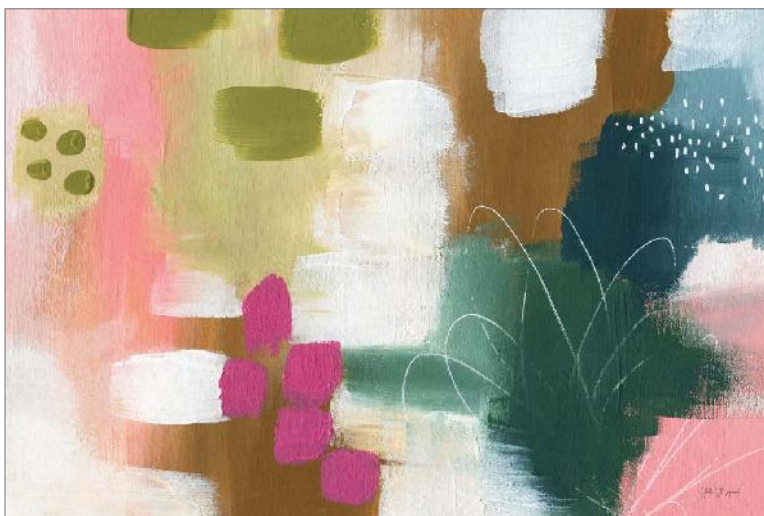
YVETTE ST. AMANT



88197 VIVIDSCAPE



88227 COLOR BURST I



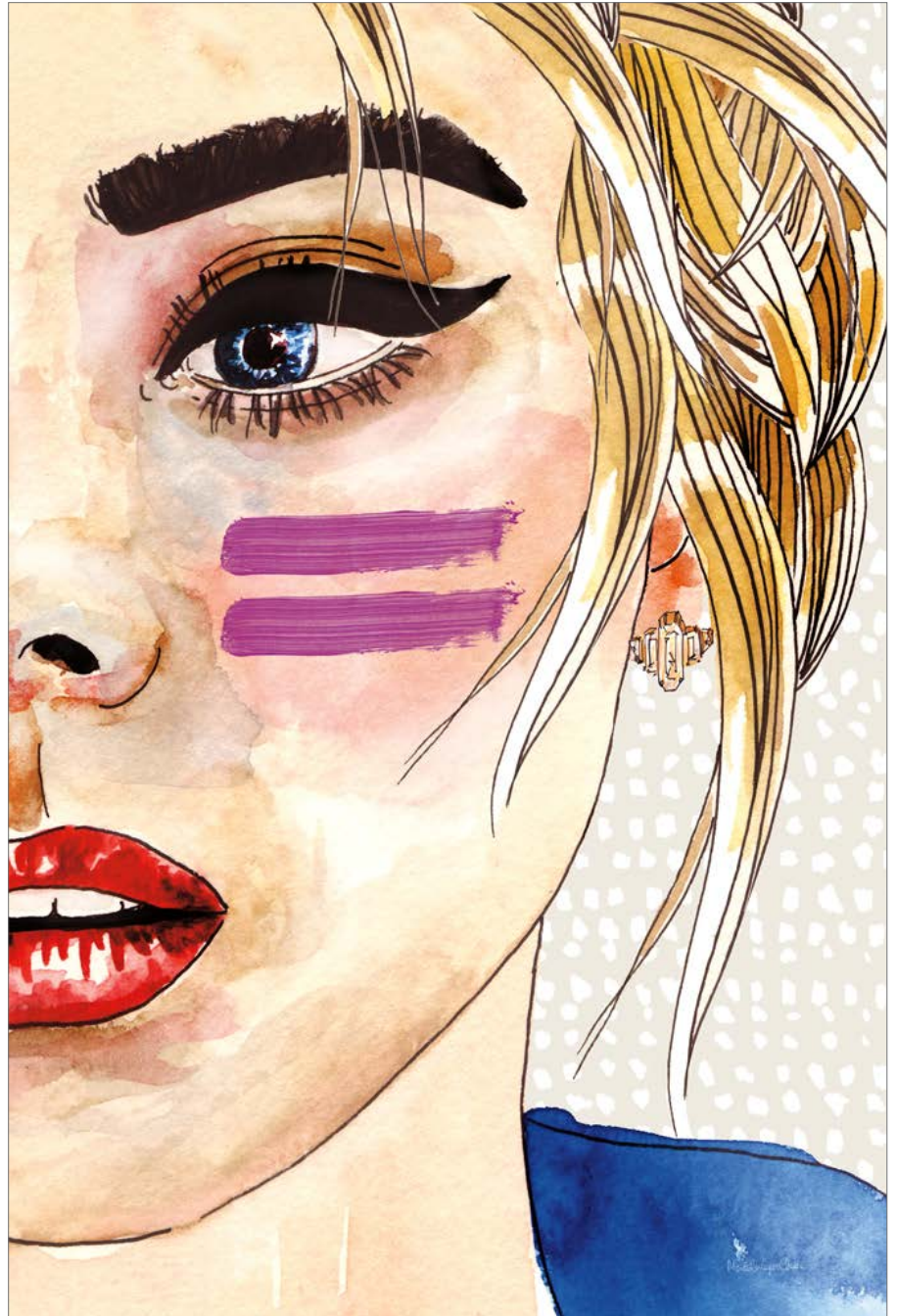
88228 COLOR BURST II



88304 MOON GIRL I



88305 MOON GIRL II



88309 POP ART GIRL



88813 RAINBOW HAIR  
DANHUI NAI

PROUD MEMBER OF

ART ©OPYRIGHT ©OALITION  
PROTECTING ART *and* CREATIVITY