

art **DECOR**

FEBRUARY 2024 | WALL DECOR



NUESTRAS OBRAS Y CUADROS SON
PERSONALIZADOS

Todas las imágenes de este catálogo están disponibles para impresión en el tamaño que lo desees. Dependiendo del tipo de enmarcado que elijas, se pueden imprimir en litografía (papel) o Canvas (lienzo).

También las enmarcamos a tu gusto y te asesoramos en todo el proceso

Visítanos y contáctanos:

 www.facebook.com/artgallery.mexico

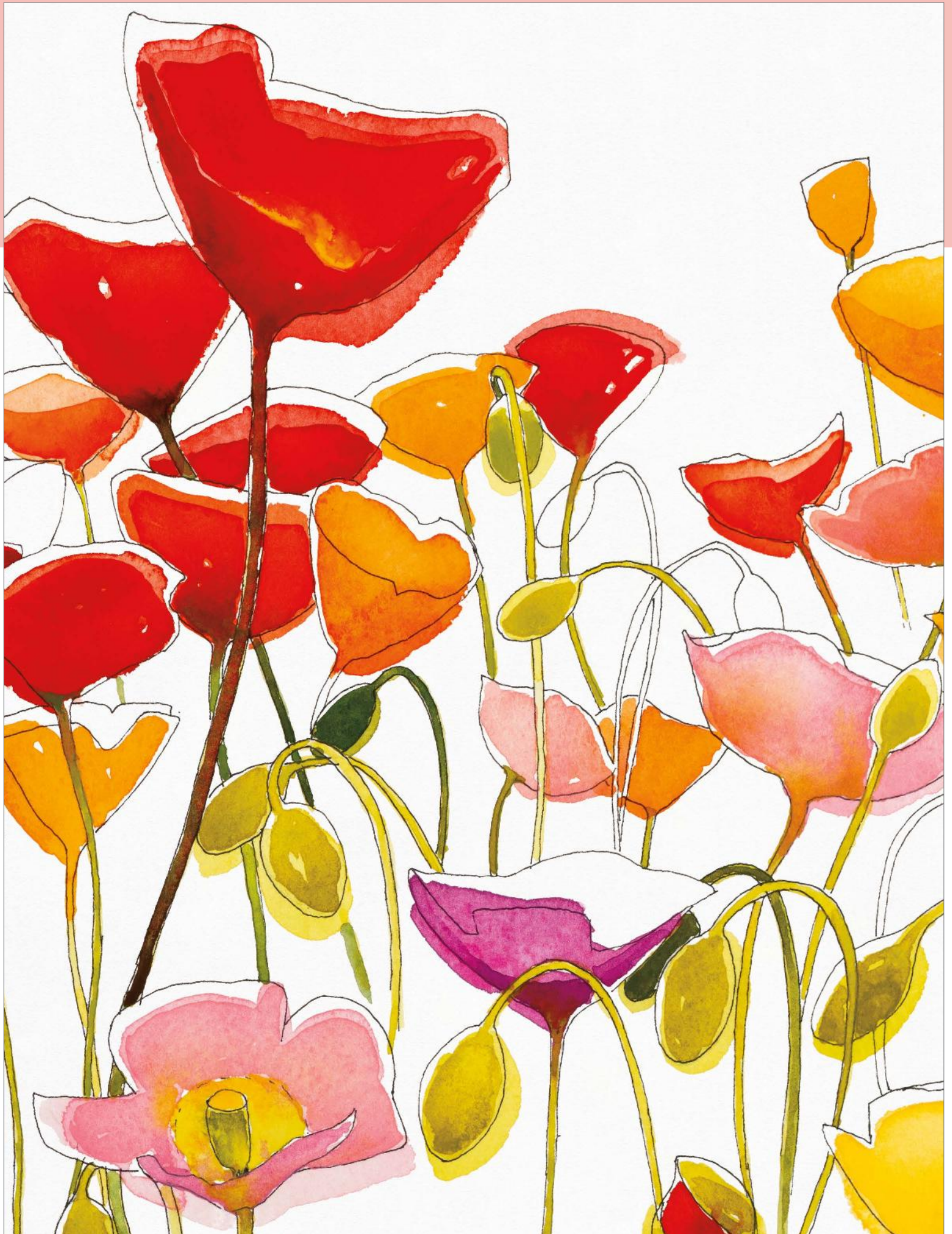
 www.instagram.com/artgallerymexico/

 www.pinterest.com/artgallerymex/

 www.twitter.com/artgallerymex

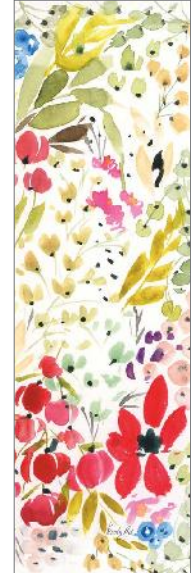






in full bloom

Perfect for enlivening any space, this floral look is a visual feast for the senses, transforming rooms with their lively and uplifting presence. Ideal for those seeking to add a bold statement to their decor, these collections are a tribute to the vibrant beauty of nature in its most colorful form.



A



B





A: 88679 POPPY PATTERNS I | B: 88680 POPPY PATTERNS II | C: 88687 WARM AND SUNNY
SHIRLEY NOVAK

A



B



A: 88605 SUNNY I | B: 88606 SUNNY II
KRISTY RICE

C: 88682 PERENNIAL INTENSITY
SHIRLEY NOVAK

C





88611 BRIGHT GARDEN
KRISTY RICE



88685 FULL ICELANDIC FLUSH NIGHT
SHIRLEY NOVAK



88686 SWEDISH DREAM
SHIRLEY NOVAK

wild wings

The trend of birds in art is soaring in popularity. These collections, featuring various feathered friends, bring the tranquility nature indoors, helping us bring a connection to the natural world into our spaces. Wild Wings is more than just wall decor; it's a way to add a touch of freedom and grace to any space.



A: 88564 SOARING
SUE SCHLABACH

B: 88683 GILDED FLIGHT | C: 88684 FLY AWAY | D: 88681 GOLD FINCH ON WHITE COSMOS
SHIRLEY NOVAK

B



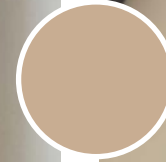
C



D



A



A: 88556 LOVEBIRDS
CANDRA BOGGS

B: 88560 ROBINS NEST | C: 88561 SONGBIRD ROBIN
SUE SCHLABACH



B



C



A



B



C



A: 88745 ANCIENT MOSAIC
WELLINGTON STUDIO

B: 88573 NEUTRAL BLOOMS I
C: 88574 NEUTRAL BLOOMS II
COURTNEY PRAHL

folk florals

This charming trend draws inspiration from traditional folk art. Painted in muted tones with a focus on exploring form in a new way, this style brings a touch of modern heritage to the home. Perfect for adding a quaint, nostalgic feel, these pieces are a nod to the timeless beauty of floral folk motifs.

A



A: 88614 WONDER WHEEL | B: 88621 SUMMERS END III | C: 88620 SUMMERS END II
D: 88619 SUMMERS END I
KATHRINE LOVELL

B



C



D





88724 BUTTERFLY GARDEN DELIGHT
JULIA PURINTON





88552 ARRANGEMENT
CANDRA BOGGS



88555 SUMMER RAIN
CANDRA BOGGS



88553 FLORAL FLING I
CANDRA BOGGS



88554 FLORAL FLING II
CANDRA BOGGS

rooted



A

B

From expressive abstract interpretations to unique photography, these pieces bring a grounding, earthy element to any space, offering both visual impact and serene beauty. Perfect for nature lovers, and anyone looking to add a sense of calm into the home.

A: 88338 TEXTURAL TREES I | B: 88339 TEXTURAL TREES II
C: 88340 TEXTURAL TREES III | D: 88341 TEXTURAL TREES IV
CHRIS PASCHKE



C

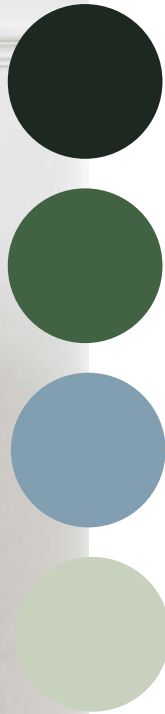


D





A



B



C



A: 88437 SOLITARY
JULIA PURINTON

B: 88693 WILLOWS BY THE POND I
C: 88694 WILLOWS BY THE POND II
SILVIA VASSILEVA

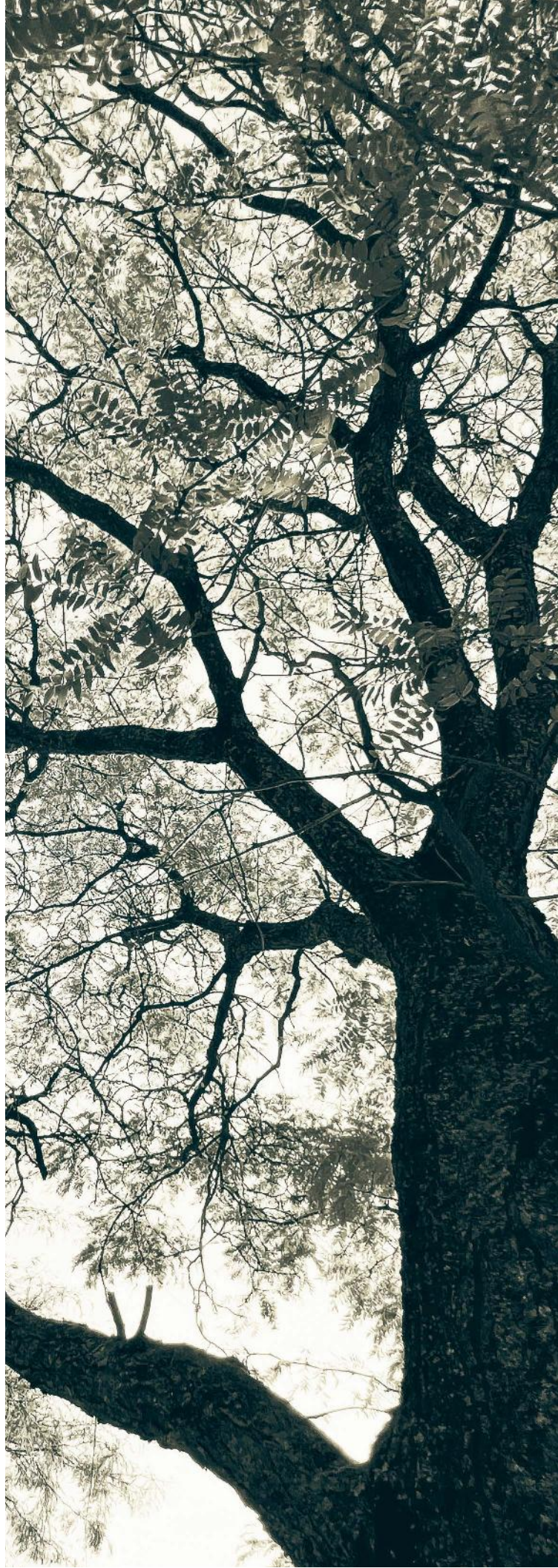
A



A: 88678 BRANCHING OUT II
B: 88677 BRANCHING OUT I
DEBRA VAN SWEARINGEN



B



classic whites

These pieces, characterized by their elegant and pure white blooms, create a tranquil and sophisticated ambiance. Perfect for minimalist and contemporary spaces, they add a subtle, yet impactful, natural beauty.



A: 88725 MIDNIGHT GARDEN
JULIA PURINTON

B: 89451 SPRING BLOSSOMS | C: 89443 MAGNOLIA BRANCH
WELLINGTON STUDIO

B



C





A: 88746 SUBLIME PEONY I | B: 88747 SUBLIME PEONY II | C: 88706 BEAUTY BOUQUET
WELLINGTON STUDIO

C



A

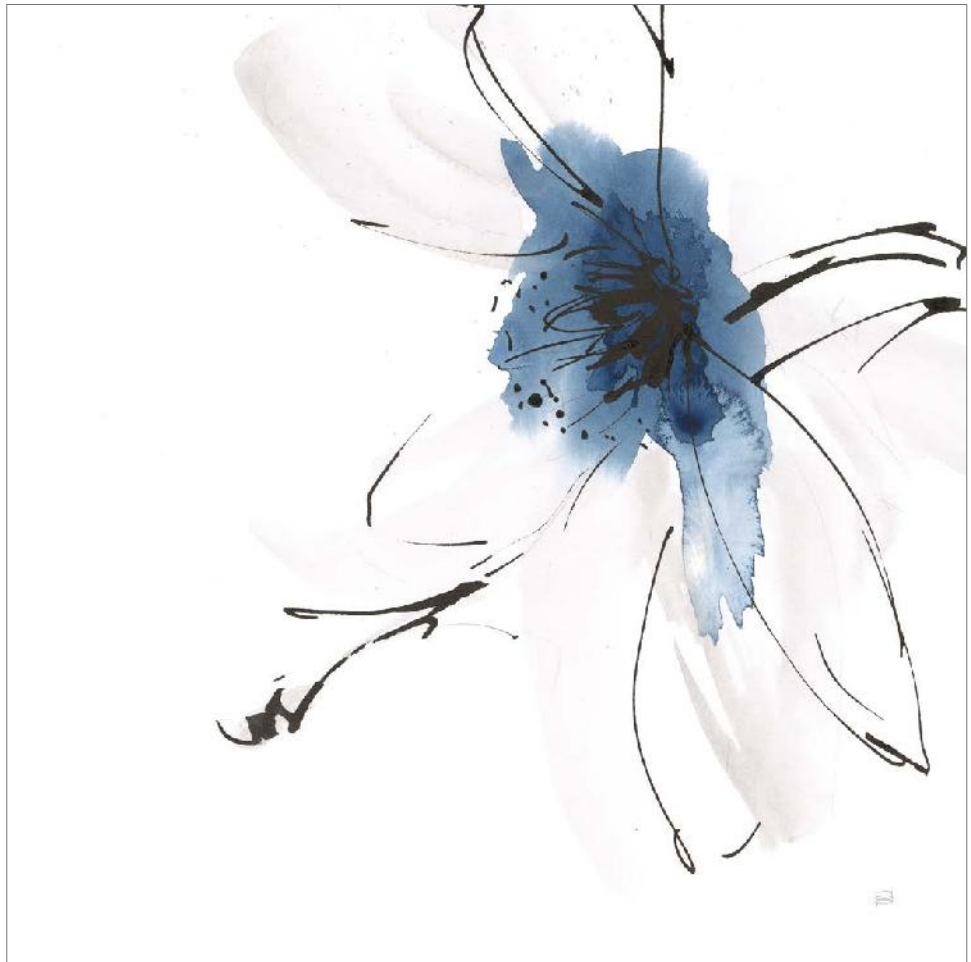


B





C



A: 88348 BLUE FANTASY I
B: 88352 BLUE FANTASY V
B: 88349 BLUE FANTASY II
CHRIS PASCHKE

explore more art

CHRIS PASCHKE



88098 SPIDER MUM BLUE I



88099 SPIDER MUM BLUE II



88567 JAIMES BOUQUET
JEANETTE VERTENTES



88689 ANGELINAS BOUQUET

JEANETTE VERTENTES



88688 SAPPHIRE STAR



88565 ABUNDANT



88690 AUTUMNS EXCITEMENT



88566 PATIENCE

KATRINA PETE



85885 WHITE DELIGHT

KATRINA PETE



85884 PURE ELEGANCE

SILVIA VASSILEVA



88696 AMONG THE APRIL FLOWERS

SILVIA
VASSILEVA

Silvia Vassileva pursued her love of art at the Academy of Fine Art in Bulgaria, where she earned both her bachelors and masters degrees. She spent six years painting and exhibiting her work in Japan before moving to the U.S. Silvia describes her style as very free and bold. She makes her paintings come alive by using contrast and unusual color palettes. Silvia's home studio, which she designed herself, is bright, contemporary and minimalist.



88822 MORNING GLORY
KATRINA PETE



KATRINA
PETE

Katrina Pete's artwork is a collection of inspired mementoes from her garden, woodland walks, and outdoor adventures with her family. Painting since childhood, she loves incorporating natural elements and light into her watercolor paintings. Her beautiful collections are created with a loose technique that allows the paint to do what it does best, flow and bloom and fade into other colors on the page.

JULIA PURINTON



88398 LIGHT OF DAWN

SILVIA VASSILEVA



88695 GLOWING SKY



88712 MISTY MORNING LANDSCAPE



88707 AUTUMN TREES

CHRIS PASCHKE



88354 ALTERED LANDSCAPE I



88355 ALTERED LANDSCAPE II

CHRIS
PASCHKE

Chris Paschke is an internationally accomplished artist and calligrapher. Her fascination with both Eastern and Western letterforms and art has been a lifelong study. She has studied with contemporary European master calligraphers in Belgium, Germany, Austria, Russia, and after an inspiring visit to China her work took on a strong Asian influence.

For decades her art has been inspired by traditional Chinese masters and Japanese Sumi-e painting, crossed with the edgy abstract expressionism of Kline, Pollock, Rothko, Gottlieb, Motherwell and Jasper Johns—thus redefining both mediums into her own contemporary style. Her art is abstractly interpretive as she uses assorted mediums including gesso, resist, watercolor, gouache, text, encaustic, collaged paper and accents of gold leaf to achieve her images.

YVETTE ST. AMANT



88521 SHELLS BY THE SHORE

YVETTE ST. AMANT



88278 TWO SAILS AT REST



88279 SAIL ON THE HORIZON

KRISTY RICE



88609 SUNSET SHORE

COURTNEY PRAHL



88580 BROAD REACH

NATHAN LARSON



88868 WHEN SEA BECOMES SKY

DEBRA VAN SWEARINGEN



88676 COLORADO SCENE



88568 FALL TRANSFORMATION
JEANETTE VERTENTES



JEANETTE
VERTENTES

Jeanette Vertentes is a contemporary painter known for colorful paintings filled with vibrant spirit. Living in Connecticut, close to the sea, her vivid creations are brought to life with contrasting and harmonious colors, movement and bold compositions.

SHIRLEY NOVAK



88308 NATIVE DANCE

PAMELA MUNGER



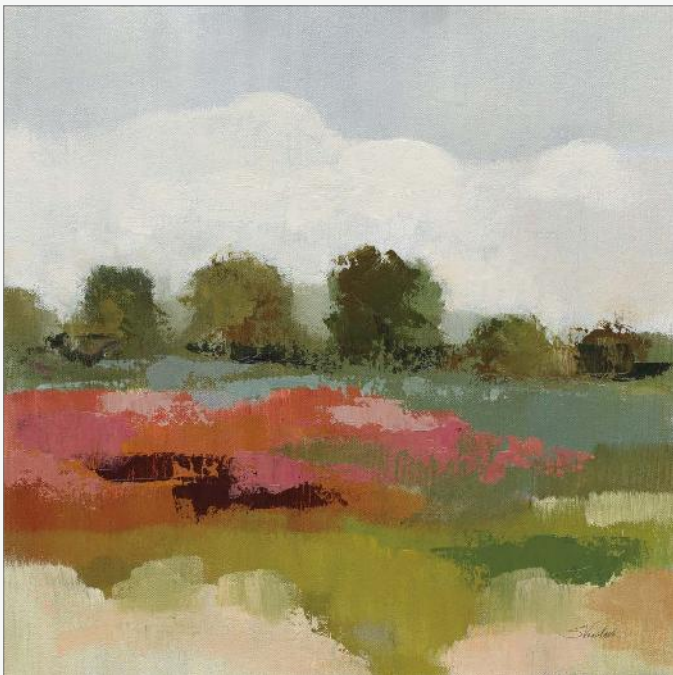
88425 REST

PAMELA MUNGER



88433 DARKENING

SILVIA VASSILEVA



88438 BURGUNDY AND SAGE LANDSCAPE I



88439 BURGUNDY AND SAGE LANDSCAPE II



86347 MUNICH STREET



86348 VILLAGE STREET
WILD APPLE PORTFOLIO

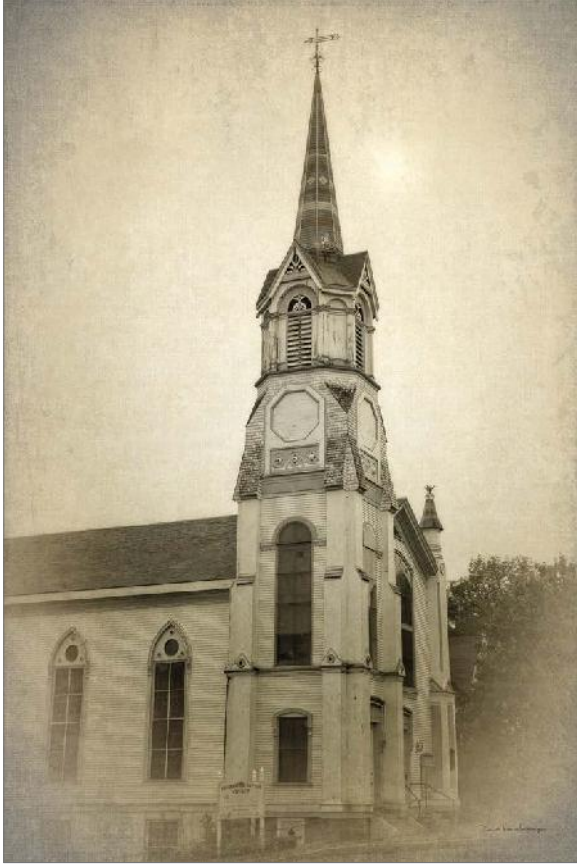


88557 SEPIA MAP OF AMERICAS
YVETTE ST. AMANT



88334 HARBOR DUO
WILD APPLE PORTFOLIO

DEBRA VAN SWEARINGEN



88675 WOODEN STEEPLE



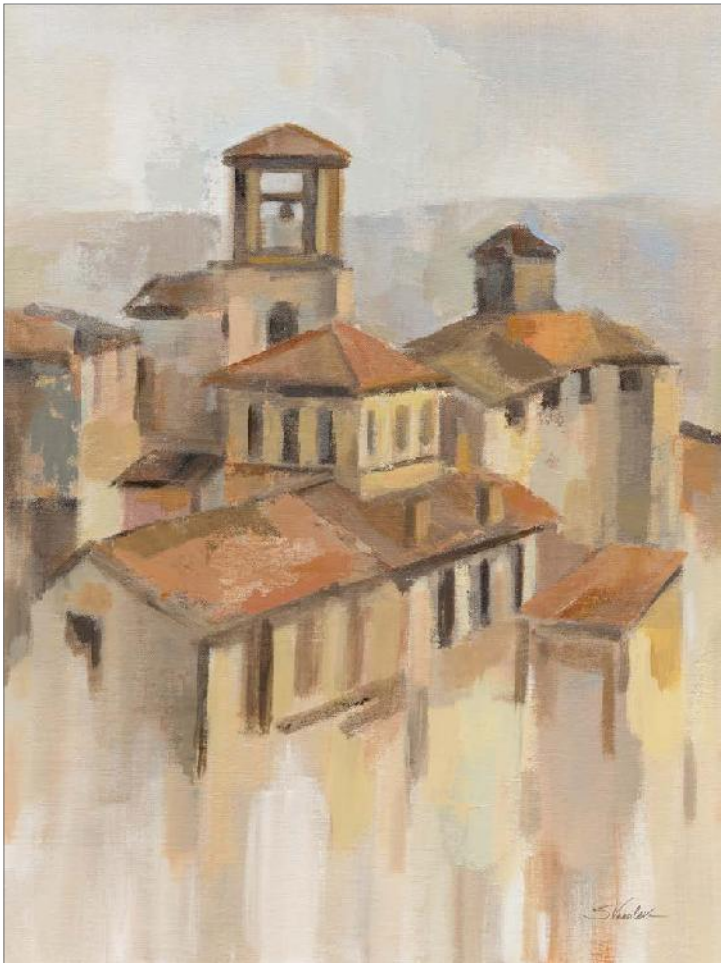
88462 RUSTIC DOOR



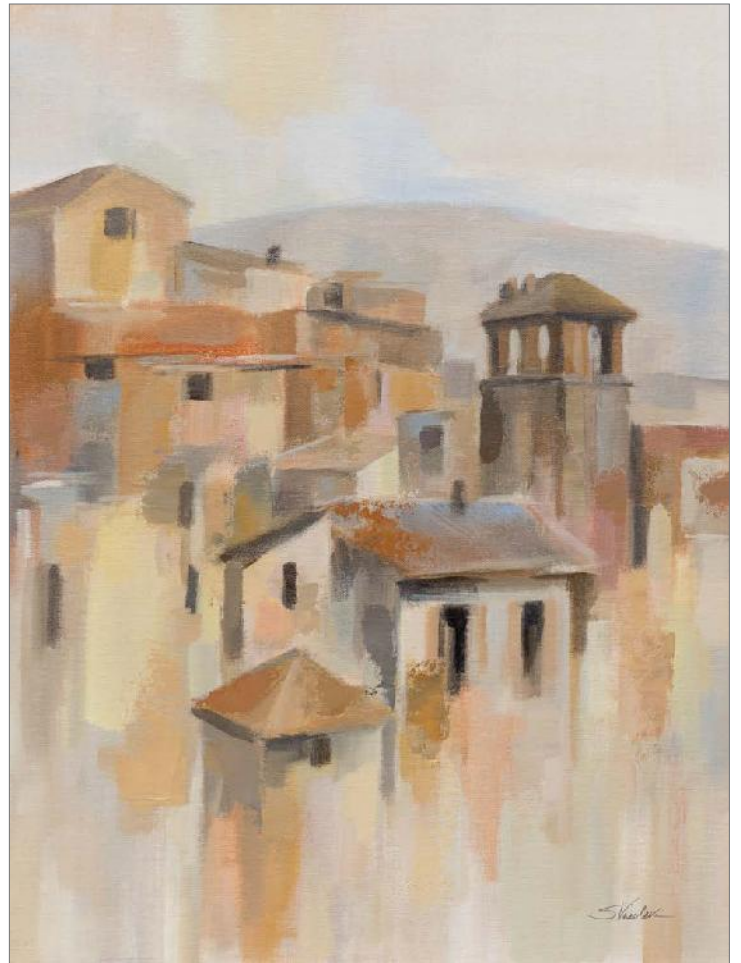
DEBRA VAN
SWEARINGEN

Debra Van Swearingen has had a passion for photography since the age of 12. She supported her hobby by working in government contracts, while taking classes at the Oklahoma School of Photography. It was in 1995, after a year of cancer remediation, that Debra decided to make her passion and her profession one and the same. Her studio is in the artistically vibrant Paseo District of Oklahoma City.

SILVIA VASSILEVA

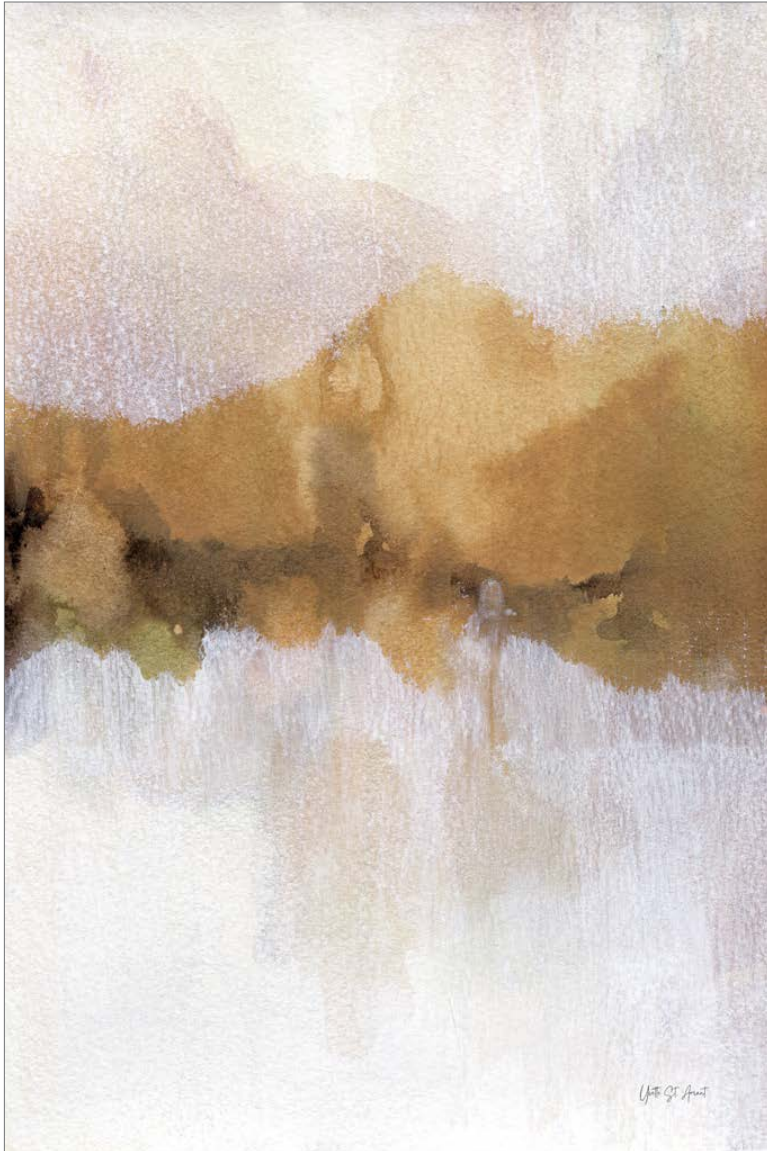


88691 TOWN IN UMBRIA I



88692 TOWN IN UMBRIA II

YVETTE ST. AMANT



88274 GOLDEN ABSTRACT

88645 FOREST SECRETS
PAMELA MUNGER



PAMELA
MUNGER

Pamela Munger grew up in southern California and now calls rural western Colorado home. The big sky, mountains and seasons are a constant inspiration for her. "Painting is a lifeline, combining creativity, solitude and limitless possibilities. I'm all about experimentation with paint, surfaces and subject matter. I like to keep it simple, avoiding detail and not giving away the whole story."

Pamela started painting as a creative outlet for her work as an English teacher, which soon grew to a passion. She paints with acrylics, using brushes and palette knives. Pamela and her husband co-own Misty Mountain Hop Farm and she paints full time. If she isn't enjoying the outdoors, you'll find her at her easel.



YVETTE ST. AMANT



88276 ABSTRACT SEASCAPE

SILVIA VASSILEVA



88444 SILVER SAND I



88445 SILVER SAND II

YVETTE ST. AMANT



88275 CLASSIC CONSERVATORY I

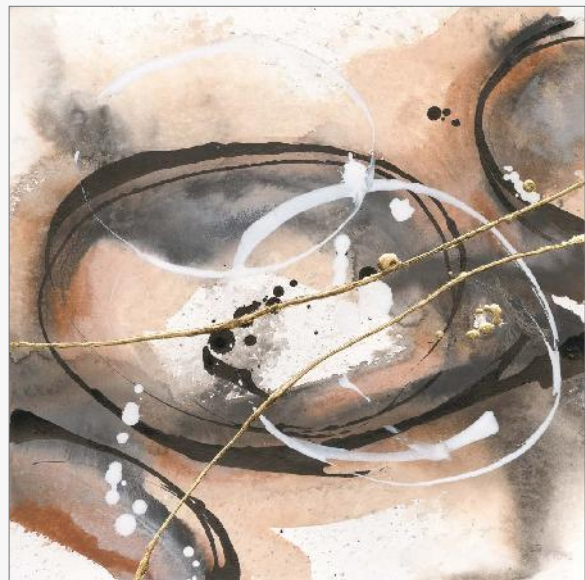


88333 CLASSIC CONSERVATORY II

CHRIS PASCHKE



88363 EXPRESSIONISM IV



88362 EXPRESSIONISM III

SILVIA VASSILEVA



88441 KYOTO SPRING

MIKE SCHICK



88371 DECONSTRUCTED I



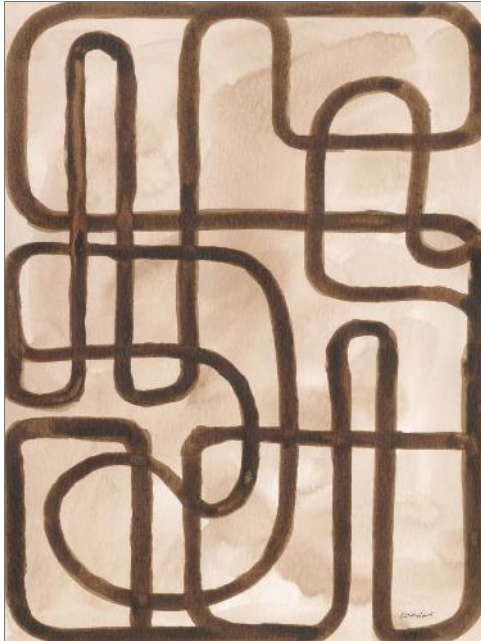
88372 DECONSTRUCTED II

PAMELA MUNGER



88646 OUTSIDE TOWN

KATHRINE LOVELL



88639 LIVE WIRE I



88640 LIVE WIRE II

A: 87971 PRACTICE IS OVER
B: 87970 JUST AROUND THE BEND
KENT YOUNGSTROM



KENT
YOUNGSTROM

"As an artist I enjoy the struggle as much as the end product." Kent Youngstrom is an artist with a beautifully varied background from interior design to graphics. His art is a journey combining a touch of faith, sentimental imagery and, every once and a while, a laugh, so that the viewer can experience the same emotional passage.



A



A



B

NATHAN LARSON



88238 BASQUE RANCH



NATHAN
LARSON

Nathan Larson is a Vermont-based photographer and chocolate consumer. For over 20 years he has created work that ranges from fine art photography to landscapes, abstracts, wildlife, and mixed media. He enjoys collaborating with clients to produce the perfect images for their projects and believes the world is a better place with more art in it. "I still use my first camera, though I have added some tools along the way, and I'm still seeking new ways to share visual stories with my audience."

DEBRA VAN SWEARINGEN



88463 VINTAGE TRAIN I BW



88464 VINTAGE TRAIN II BW



88465 VINTAGE TRAIN III BW

NATHAN LARSON



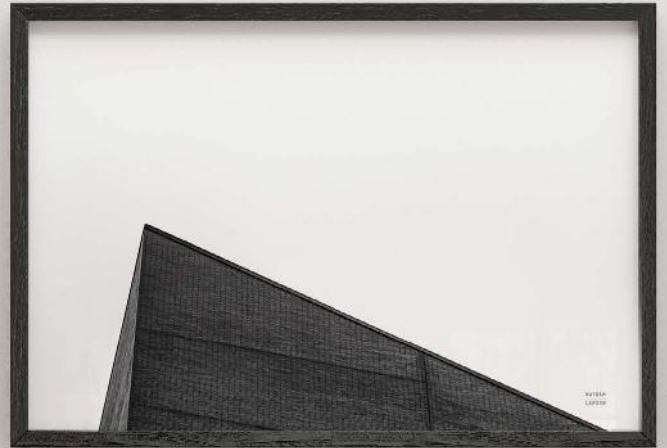
88597 PHILLY I



88599 PHILLY III



88598 PHILLY II
NATHAN LARSON



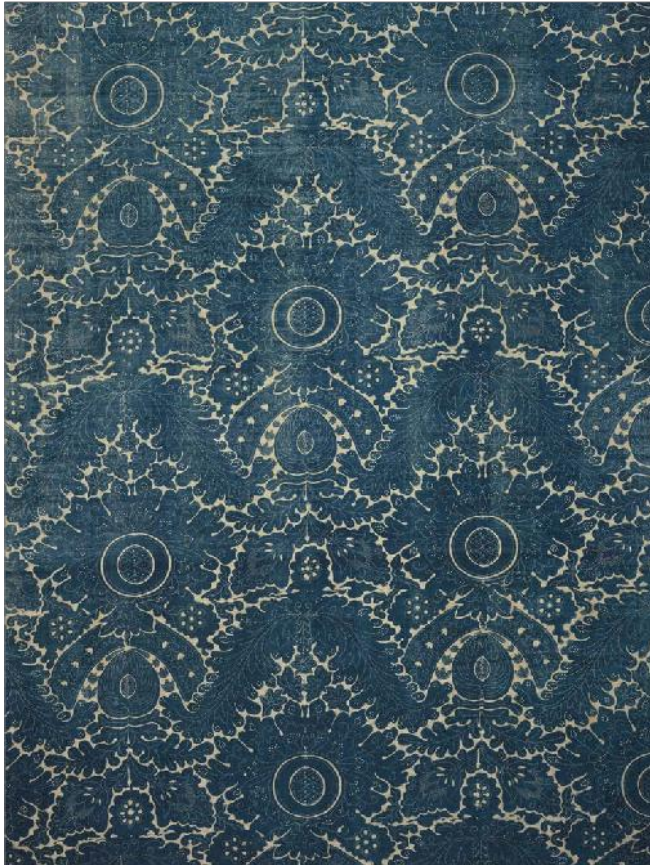
88600 PHILLY IV
NATHAN LARSON



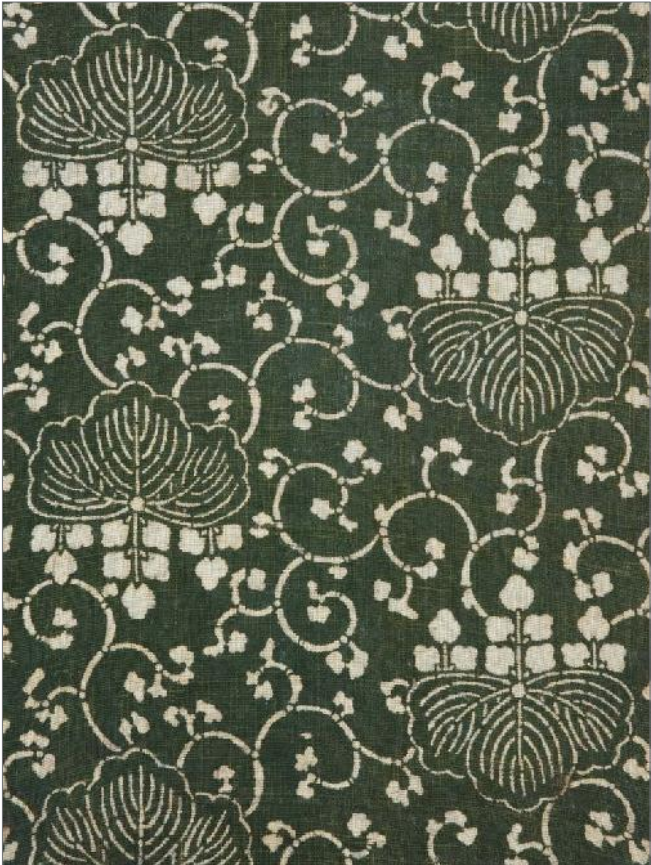
88601 PHILLY VIEW I
NATHAN LARSON



88602 PHILLY VIEW II
NATHAN LARSON



86357 VINTAGE TEXTILE I



86358 VINTAGE TEXTILE II

CANDRA BOGGS



88491 STARSHINE MANDALA II



88493 STARSHINE MANDALA IV

WILD APPLE PORTFOLIO



88336 WILD STRAWBERRIES

PAMELA MUNGER



88644 PEAR AND ORANGE

SILVIA VASSILEVA



88697 LEMONS FROM THE SOUTH I

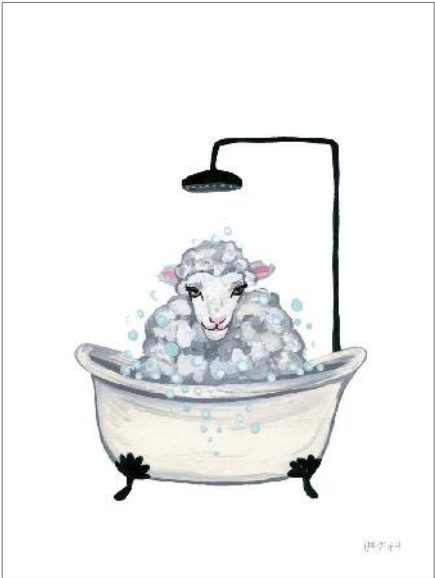


88698 LEMONS FROM THE SOUTH II

YVETTE ST. AMANT



88218 HIGHLAND COW IN TUB



88219 SHEEP IN TUB AND SUDS

YVETTE ST. AMANT

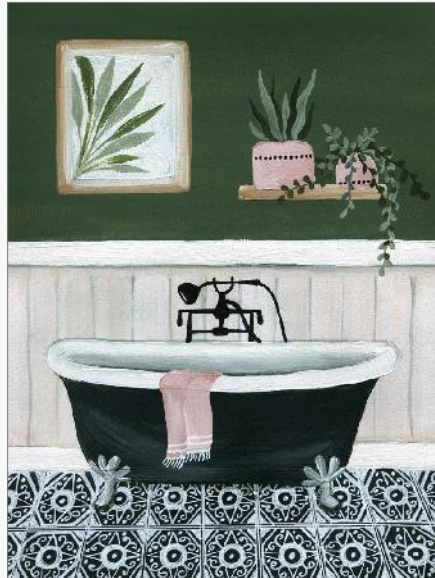


88220 BOHO CHIC BATH I



88221 BOHO CHIC BATH II

YVETTE ST. AMANT

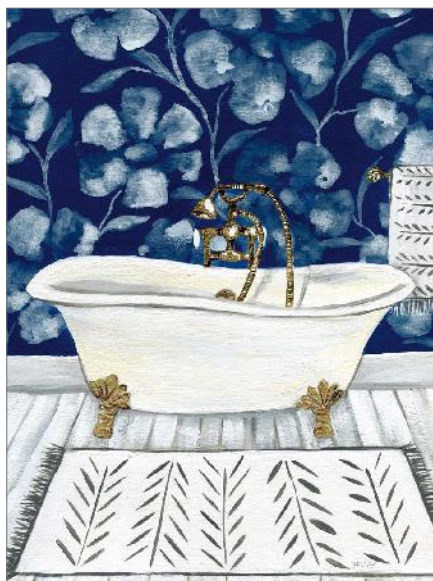


89026 GREEN BATHROOM I



89027 GREEN BATHROOM II

YVETTE ST. AMANT

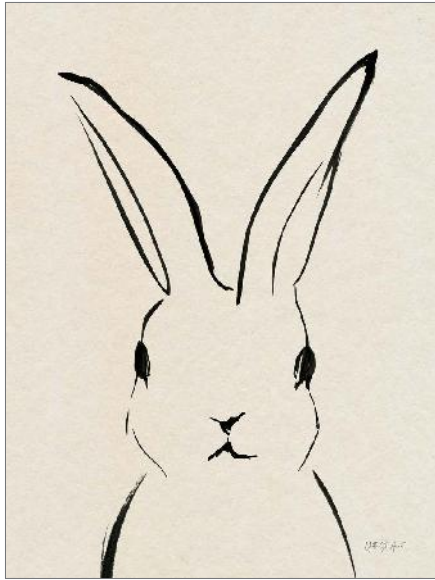


89054 BOLD BATHROOM I



89055 BOLD BATHROOM II

YVETTE ST. AMANT



88273 BUNNY PORTRAIT

PAMELA MUNGER



88423 RABBIT FACE I



88424 RABBIT FACE II

A: 88272 ILLUSTRATIVE BUNNY II
B: 88271 ILLUSTRATIVE BUNNY I
YVETTE ST. AMANT



YVETTE ST.
AMANT

Yvette St. Amant, a French-Canadian born licensed and published artist, now living in the USA, is well known for producing a variation of unique styles with her diverse techniques. Through her online art courses and social media, she inspires and teaches thousands of aspiring artists. Drawing and painting since she was a toddler, she developed a strong interest in interior design by her teens. Raised on a lake surrounded by wilderness, she is deeply connected to nature and water. With a great love for the beach and tropics, her first globally published tropical florals collection in 2003 set the foundation for her professional artistic career. Her style is a fusion of culture, nature, and personality, strongly influenced by interior design, and trend forward colors.

A



B



PROUD MEMBER OF

ART ©OPYRIGHT ©OALITION
PROTECTING ART *and* CREATIVITY