

art DECOR

APRIL 2024 | WALL DECOR



NUESTRAS OBRAS Y CUADROS SON PERSONALIZADOS

Todas las imágenes de este catálogo están disponibles para impresión en el tamaño que lo desees. Dependiendo del tipo de enmarcado que elijas, se pueden imprimir en litografía (papel) o Canvas (lienzo).

También las enmarcamos a tu gusto y te asesoramos en todo el proceso

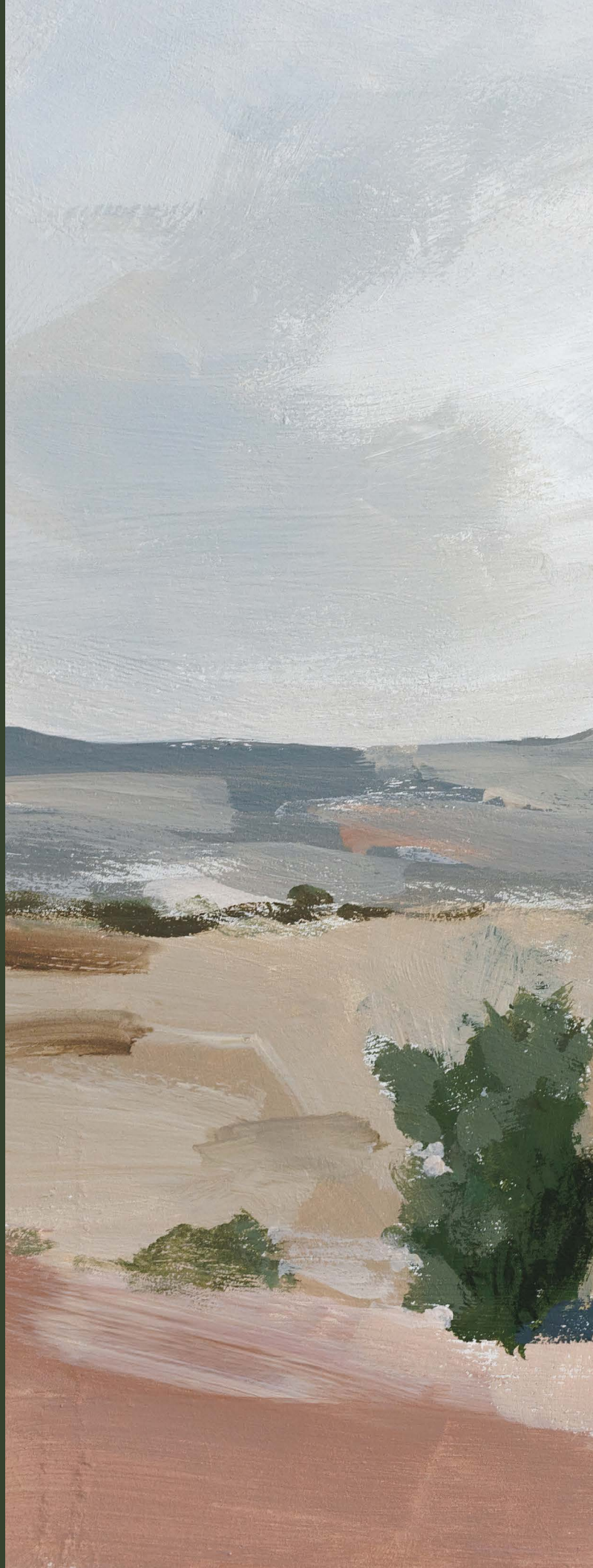
Visítanos y contáctanos:

 www.facebook.com/artgallery.mexico

 www.instagram.com/artgallerymexico/

 www.pinterest.com/artgallerymex/

 www.twitter.com/artgallerymex







darkscapes

Immerse yourself in the world of Darkscapes, where moody landscapes come alive with rich, deep color stories. These artworks, painted in a loose, painterly style, evoke a sense of mystery and drama. Perfect for adding a touch of enigmatic beauty to any space.



- 82606 EVENING LANDSCAPE ABSTRACT
- 89970 MISTY RIVER VALLEY
- 78313 TWILIGHT FOG DARK
- 89973 WAKING UP AT PAPA GRANNYS HOUSE
- 89964 CHESTNUT SPRINGS II





A

welcome

HALEY

KNIGHTEN

In the heart of a studio filled with the joyful chaos of creativity, Haley Knighten brings her visions to life. Surrounded by a treasure trove of paints, brushes, and an array of unconventional tools, she layers colors and textures with a love and care that's palpable in every stroke. Her creations are more than just pieces of art; they're invitations to find joy and comfort in the everyday.

A: 90304 MOODY BABY
HALEY KNIGHTEN



89967 MAUVE MESA I
HALEY KNIGHTEN



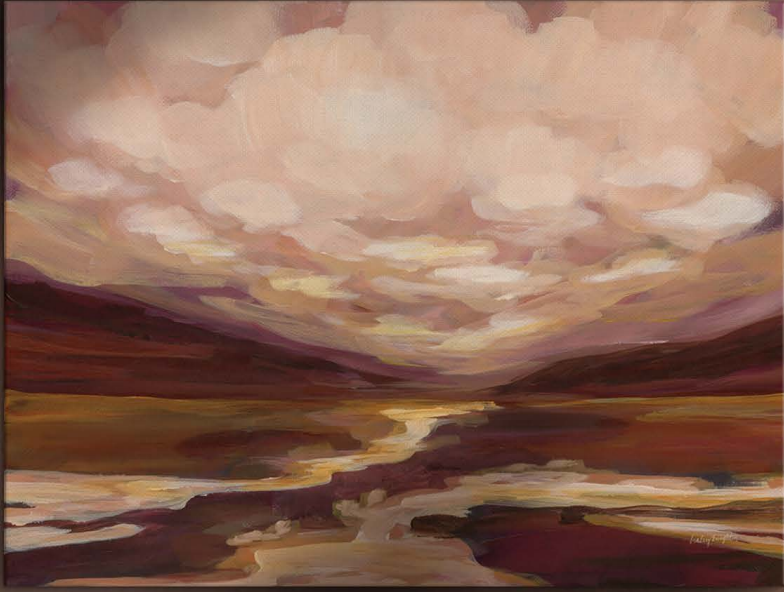
89968 MAUVE MESA II
HALEY KNIGHTEN



89957 LAUREL LOWLAND I
HALEY KNIGHTEN



89958 LAUREL LOWLAND II
HALEY KNIGHTEN



Inspired by everything from the texture of a leaf to the color of the sky at dusk, her work is a celebration of the beauty that surrounds us



89975 HENNA HOLLOW
HALEY KNIGHTEN



89962 TIMBER THICKET II
HALEY KNIGHTEN



89963 CHESTNUT SPRINGS I
HALEY KNIGHTEN



89964 CHESTNUT SPRINGS II
HALEY KNIGHTEN



89973 WAKING UP AT PAPA GRANNYS HOUSE
HALEY KNIGHTEN



A



B





Haley shares her journey with a growing community of art lovers online, offering glimpses into her process and the messily beautiful space where it all comes together at [@haleyrussellstudio](https://www.instagram.com/haleyrussellstudio)

C



D



A: 90301 FADE INTO FALL I
B: 90302 FADE INTO FALL II
C: 89959 QUEEN OF HEARTS I
D: 89960 QUEEN OF HEARTS II
HALEY KNIGHTEN

A



B



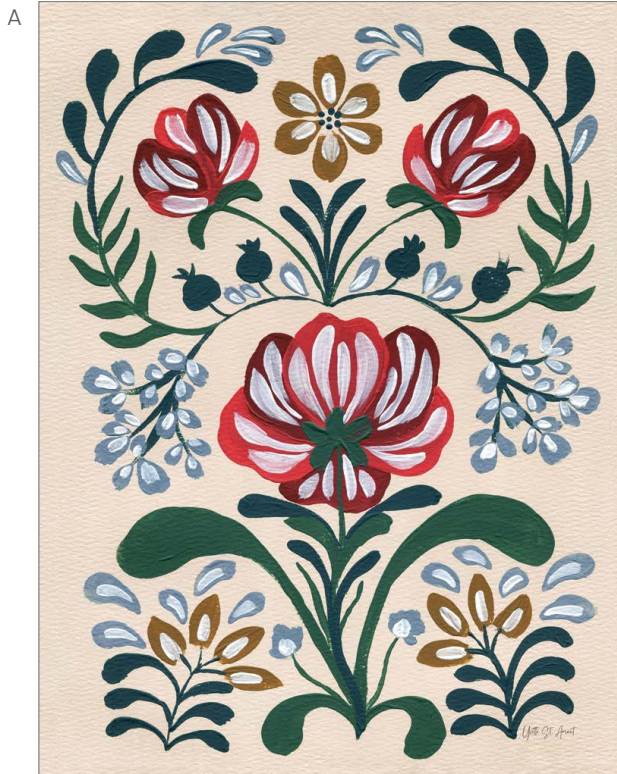
C



A: 90303 BEVY
B: 89971 WILDWOOD
C: 89970 MISTY RIVER VALLEY
HALEY KNIGHTEN

spring fling

Embrace the rejuvenating spirit of spring with a collection of art that beautifully blends vintage charm with the season's vibrant energy. From delicate florals in warm color palettes to vintage collections of rabbits, hares, and botanical birds, each piece adds a touch of natural elegance, creating a harmonious balance between the old and the new. Perfect for infusing the home with a sense of renewal and timeless beauty, this art makes every corner feel like a celebration of nature's awakening.



A: 89949 FOLKSY FLORAL II | B: 89948 FOLKSY FLORAL I
C: 89950 FOLKSY FLORAL III
YVETTE ST. AMANT

C





A: 89980 WOODLAND FOLK BIRD | B: 89981 WOODLAND FOLK OWL
YVETTE ST. AMANT

C: 19592 SUMMERTIME I | D: 19593 SUMMERTIME II
CANDRA BOGGS







A: 86692 COUNTRY HARE
JULIA PURINTON

B: 89938 COTTAGE HARE I | C: 89939 COTTAGE HARE II
WILD APPLE PORTFOLIO

A



B





C



A: 89570 VINTAGE WARBLER II
B: 89571 VINTAGE WARBLER III
B: 89572 VINTAGE WARBLER IV
WILD APPLE PORTFOLIO





roun

This trend is where art embraces the
and symmetry of circles and manda
Featuring modern interpretations of
timeless shapes painted in neutral
palettes, this collection exudes calm
balance. Perfect for adding a touch
geometric elegance and mindfulne
any space, we're loving the contem
take on ancient motifs that symboli
and harmony.

A: 88255 COLLECTED MANDALA STAM
B: 88256 COLLECTED MANDALA STAM
YVETTE ST. AMANT

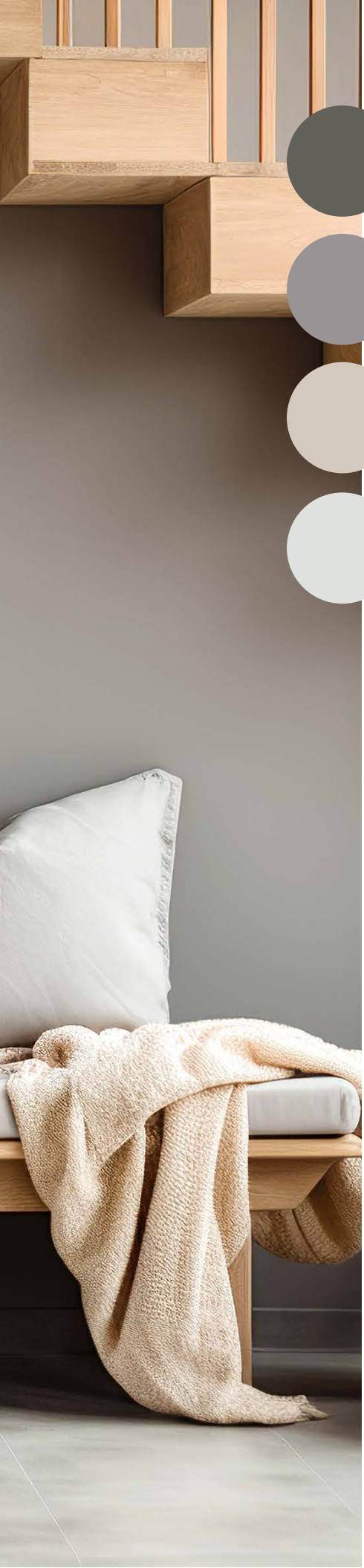
d & round

the beauty
of these
color
and
of
ess to
emporary
ze unity



A





B



C



A: 86228 GENTLE MANDALA
DANHUI NAI

C: 88253 NATURES PINWHEEL I
D: 88254 NATURES PINWHEEL II
YVETTE ST. AMANT



B



A: 88261 MUSTARD MANDALA | B: 88259 ROSE MANDALA | C: 88260 PINK MANDALA
YVETTE ST. AMANT



C



moody florals

Explore the darker, more dramatic side of botanical beauty. With a focus on composition, these collections feature contemporary and abstract interpretations of flowers, and striking macro photography. The color palettes are deep and moody, with a mix of black and white and rich, saturated hues. This trend is perfect for adding a touch of contemporary sophistication and emotional depth to any space, showcasing the complex and mysterious nature of florals.



A: 89717 DAHLIA II | B: 89725 DAHLIA IV BW | C: 89726 DAHLIA V BW
DEBRA VAN SWEARINGEN

B



C





A

A: 88547 ELEVATION BLOOM
NATHAN LARSON

B: 89377 WHITE RUSSIAN POPPIES | C: 89487 LATE SUMMER
SHIRLEY NOVAK



B



C





A



A: 13525 MORNING GLOW I
JAMES WIENS

B: 89385 MIDNIGHT ROSES
YVETTE ST. AMANT

B



A





A: 89490 COQUELICOTS | B: 89375 GARDEN MEMORIES
SHIRLEY NOVAK



cool coastal

Featuring coastal creatures and seascapes, this trend is painted in deep blues and creamy neutrals, creating a calming and tranquil color story. This look is perfect for bringing a touch of the ocean's majesty and the cool, refreshing vibe of coastal living into your home.



A: 90487 DEEP DWELLER
DANHUI NAI

B: 86319 COASTAL CRABS I | E: 86320 COASTAL CRABS II
MERCEDES LOPEZ CHARRO

C: 86638 WAVE WORDS I | D: 86639 WAVE WORDS II
WILD APPLE PORTFOLIO



89856 LONG LEGGED SANDPIPER
WILD APPLE PORTFOLIO





88247 BEACH TREASURES I
YVETTE ST. AMANT



88248 BEACH TREASURES II
YVETTE ST. AMANT



89983 BLUE CRAB
YVETTE ST. AMANT



89982 SWIMMING SEA TURTLE
YVETTE ST. AMANT

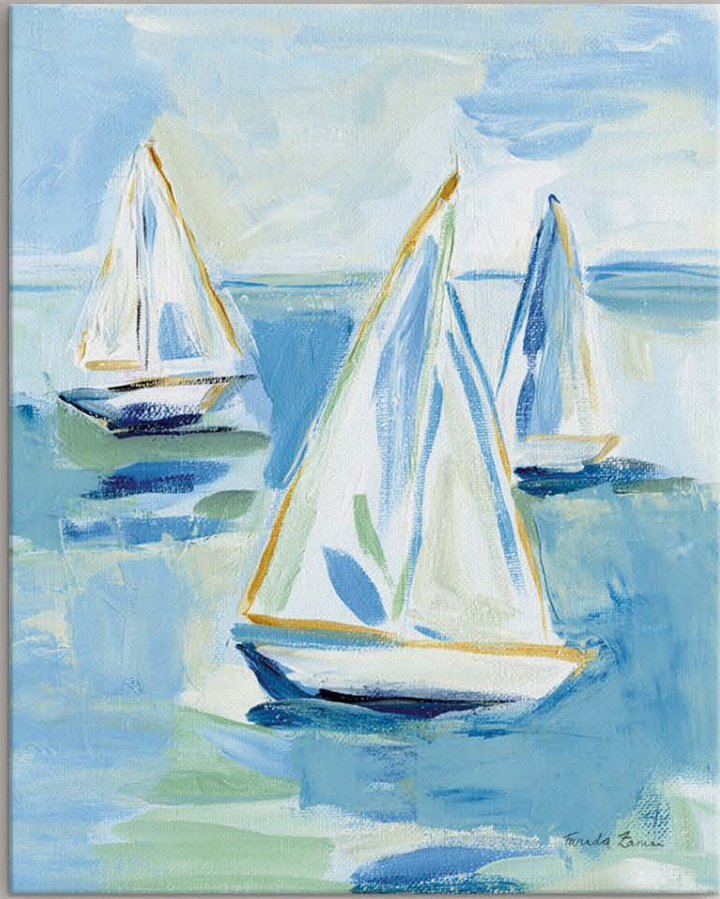
A



A: 89810 CRASH
JEANETTE VERTENTES

B: 87979 SETTING SAIL
FARIDA ZAMAN

B



explore more art

FARIDA ZAMAN

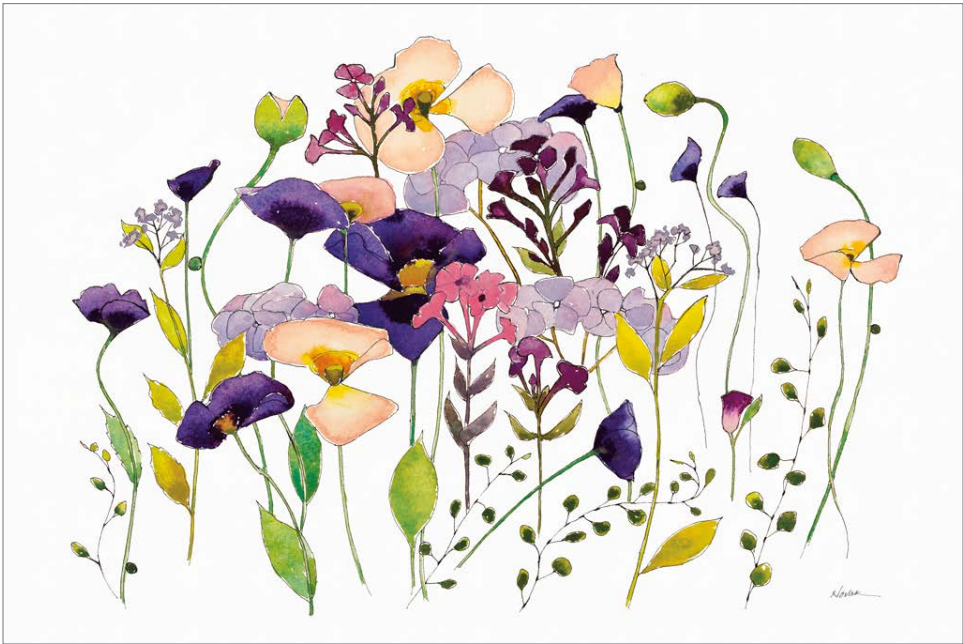


87132 COASTAL BLOOMS



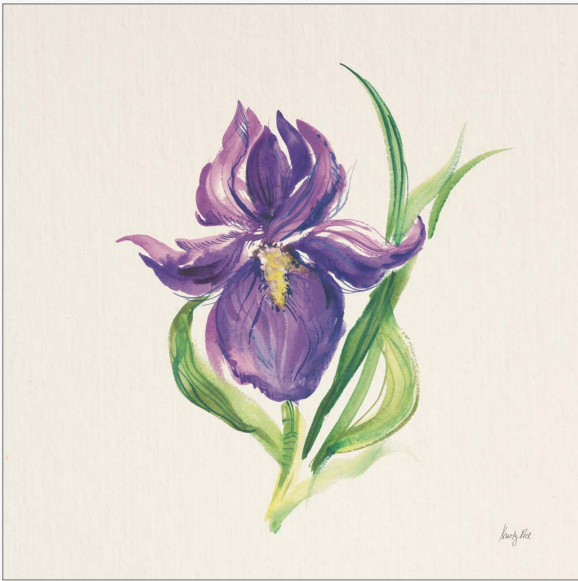
A: 89386 MAGNOLIA TIME | B: 89387 BRANCH OF BLOSSOMS
WELLINGTON STUDIO

SHIRLEY NOVAK



89483 PINK AND PURPLE POPPIES

KRISTY RICE

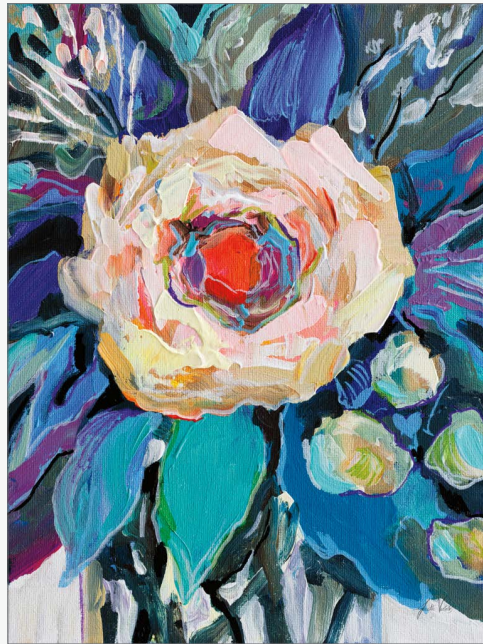


87618 EASTER BLOOM I



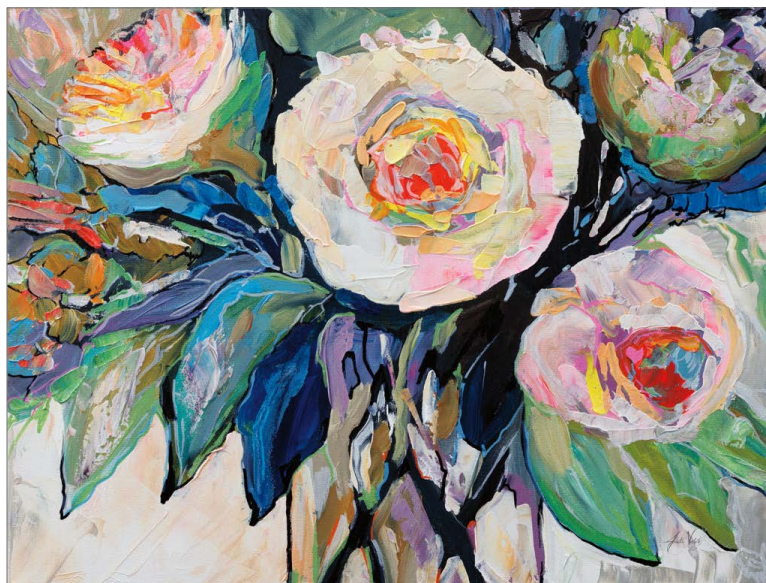
87619 EASTER BLOOM II

JEANETTE VERTENTES



89653 MAEVES BOUQUET

JEANETTE VERTENTES



89655 WHITNEYS BOUQUET

SHIRLEY NOVAK



89491 THE BLACK POPPY

SHIRLEY NOVAK



89378 SUNNY GOODGE STREET

SHIRLEY NOVAK



89484 FOUR BIRDS A BLENDING

SHIRLEY NOVAK



89485 ESSENCE

SILVIA VASSILEVA



89700 PEACH PINK FLORAL

JULIA PURINTON



81284 COTTAGE GERANIUMS

LESLIE TRIMBACH



86418 PINK PEONY



LESLIE
TRIMBACH

Leslie Trimbach has always had a creative need to draw and paint. Growing up in a creative and encouraging atmosphere, she learned to explore her talents. At the age of 8 she began watercolor classes with Roger Haas and later received her Fine Art Degree from the University of Dayton. Working from her home studio, Leslie is sought after for her beautiful collections for home decor products as well as gift, wall art and tabletop.

A



B



A: 89800 SAGE AND PEACH FLOWERS I
B: 89801 SAGE AND PEACH FLOWERS II
DANHUI NAI



DANHUI
NAI

Danhui Nai was born in mainland China and raised in an artistic household with her sculptor father and painter mother. Her natural passion for art was guided through classical training which she applies in her California studio to create beautiful, on-trend artwork in a variety of media. She studied interior design later in Paris and New York City. She worked in the textile industry in Manhattan, where she continued her studies and artistic development.

DANHUI NAI



89936 DANCING SHADOWS

JULIA PURINTON



87671 GOING HOME

CHRIS PASCHKE



89507 TINTED TREESCAPE III



89508 TINTED TREESCAPE IV

PAMELA MUNGER



87853 ARID

PAMELA
MUNGER

Pamela Munger grew up in southern California and now calls rural western Colorado home. The big sky, mountains and seasons are a constant inspiration for her. "Painting is a lifeline, combining creativity, solitude and limitless possibilities. I'm all about experimentation with paint, surfaces and subject matter. I like to keep it simple, avoiding detail and not giving away the whole story."

Pamela started painting as a creative outlet for her work as an English teacher, which soon grew to a passion. She paints with acrylics, using brushes and palette knives. Pamela and her husband co-own Misty Mountain Hop Farm and she paints full time. If she isn't enjoying the outdoors, you'll find her at her easel.



89450 WINDBLOWN TREE
WELLINGTON STUDIO



WELLINGTON
STUDIO

Tucked away on Canada's West Coast, Wellington Studio is more than just an art studio, it's a place buzzing with creativity. Known for its eclectic mix of art and techniques, Wellington Studio produces a variety of collections in today's most sought-after styles.

The studio isn't just about making art; it's about creating collections that make your space feel like you. Whether it's a tranquil nature scene that brings a touch of calm or a bold abstract that makes a statement, their art collections are designed to bring art home.

With a deep love for all things creative and colorful, Wellington is a place where different art forms mingle, where new ideas take shape, and where creativity is king; it's where art comes to life, constantly evolving and inspiring.

SILVIA VASSILEVA

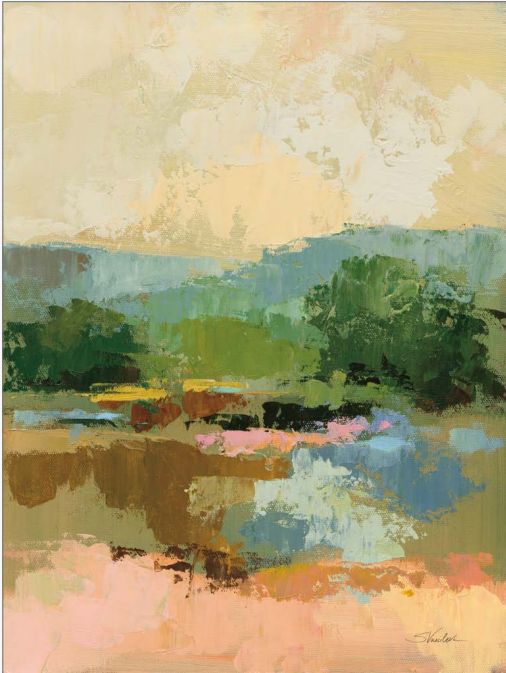


89701 LIGHT SUMMER RAIN I



89702 LIGHT SUMMER RAIN II

SILVIA VASSILEVA

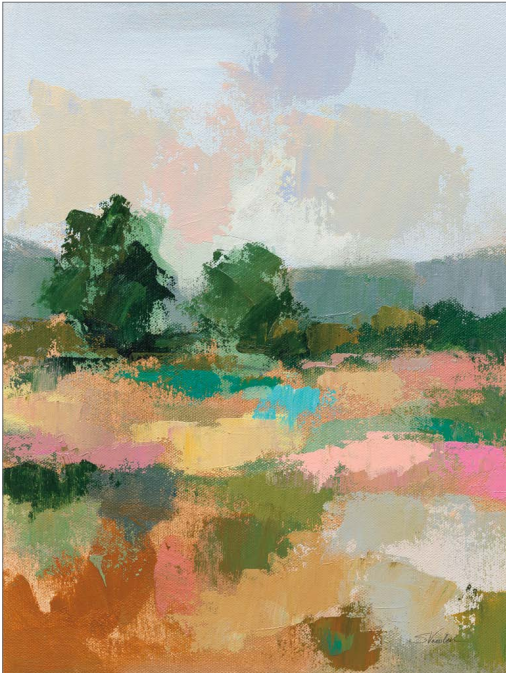


89695 ACROSS THE RIVER VIEW I

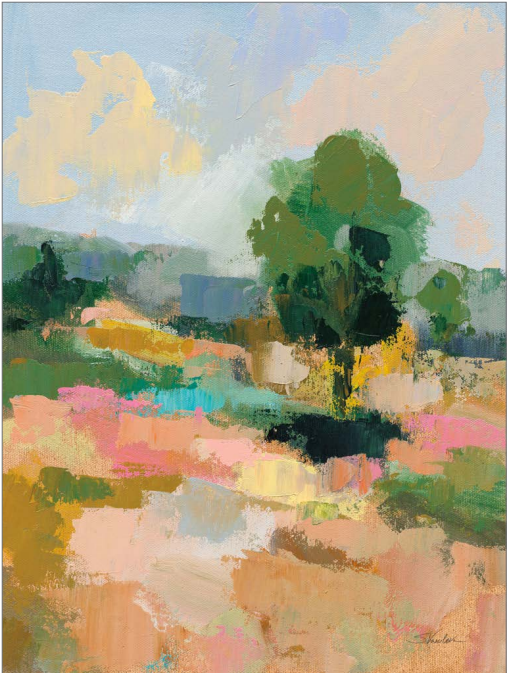


89696 ACROSS THE RIVER VIEW II

SILVIA VASSILEVA

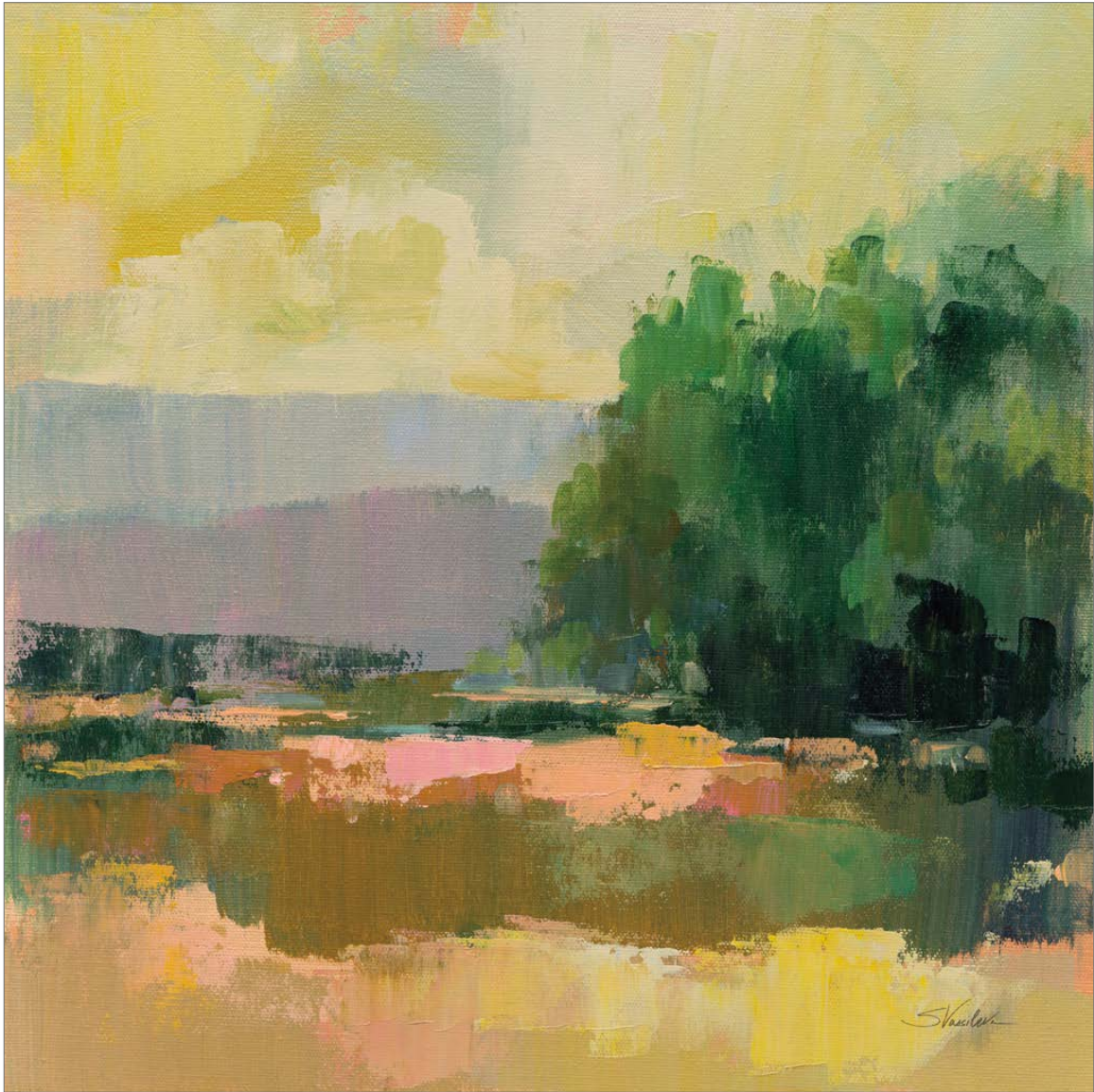


89704 SPRING LANDSCAPE I



89705 SPRING LANDSCAPE II

SILVIA VASSILEVA



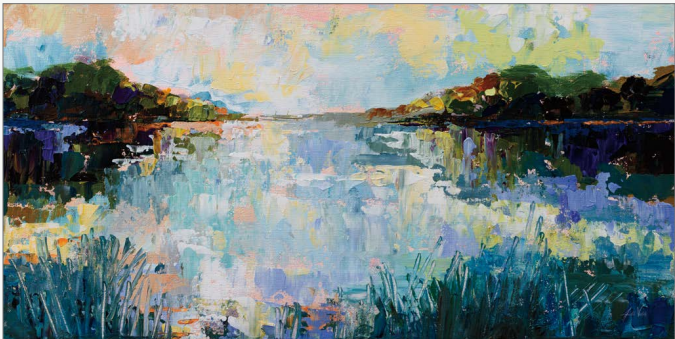
89706 WILLOW

SILVIA VASSILEVA



89703 SEASIDE SUNSET

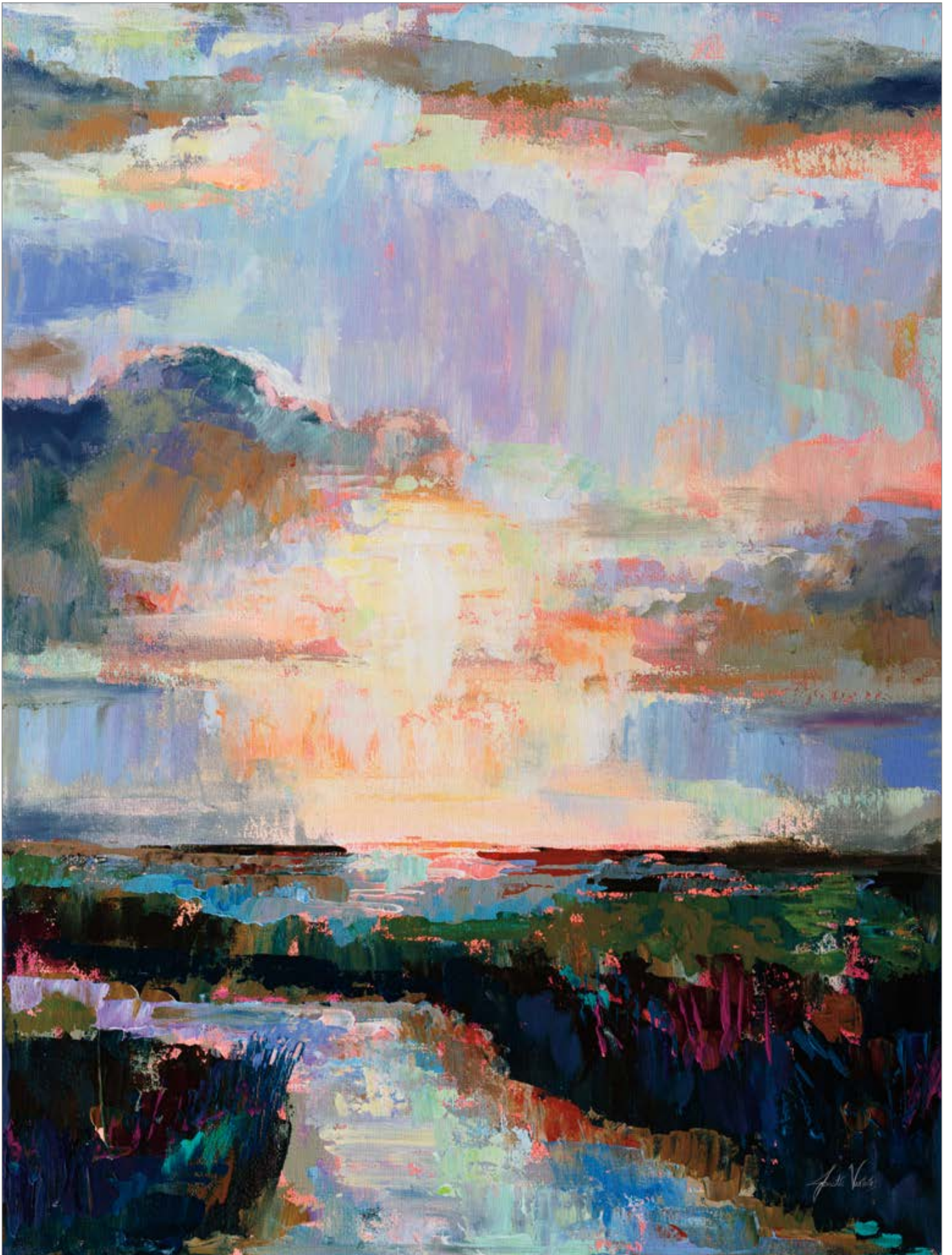
JEANETTE VERTENTES



89214 FIND



89216 FOUND



89217 LIGHT

PAMELA MUNGER



89356 EARLY DECEMBER

JULIA PURINTON



87670 STILL

BELINDA ALDRICH



89446 PENOBSCOT BAY



89447 PENOBSCOT BAY CHANNEL MARKER

YVETTE ST. AMANT



89319 INK LANDSCAPE

YVETTE ST. AMANT



89219 WOODSY I



89220 WOODSY II

SARAH ADAMS



89902 ETHEREAL LEAVES I



89903 ETHEREAL LEAVES II

DANHUI NAI



89937 MIGRATION

A



B



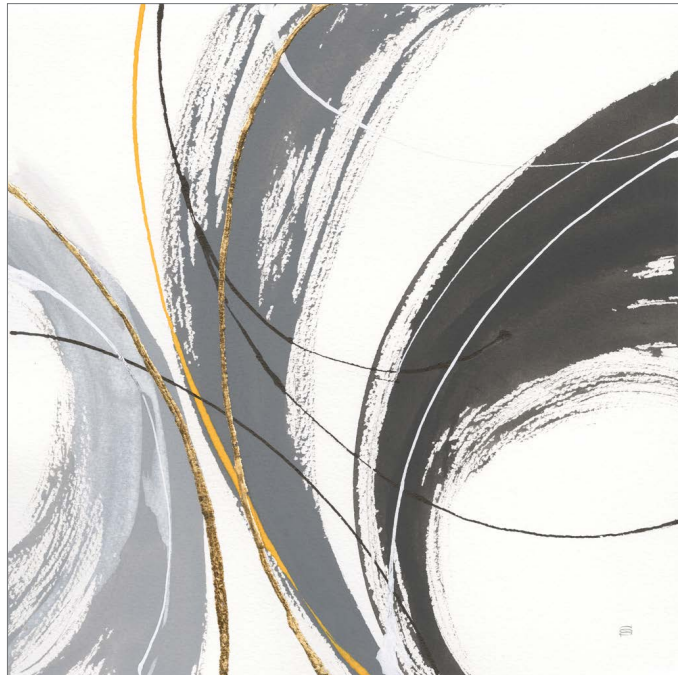
A: 89805 FREE SPIRIT
 B: 89806 WIND DANCER
 ALBENA HRISTOVA



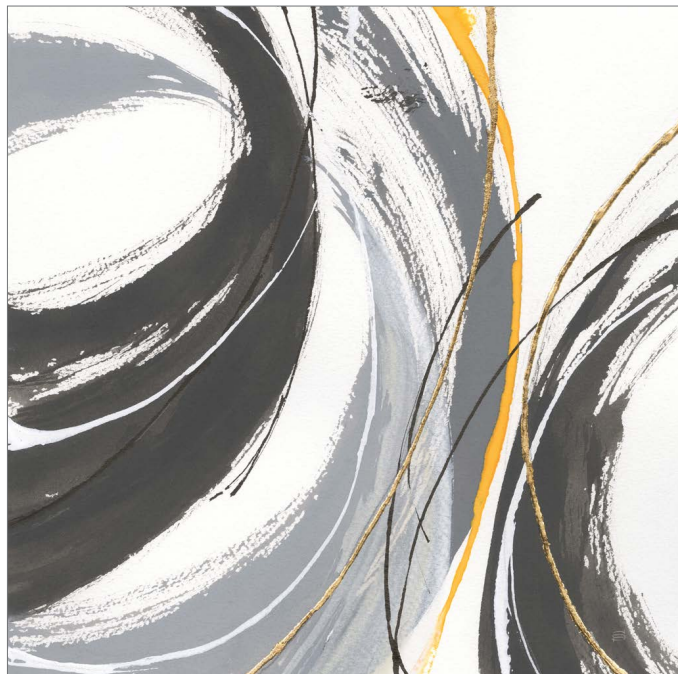
ALBENA
 HRISTOVA

Albena Hristova, an international artist with over twelve years of classical art training and a master's in mural painting, is one of the most successful open edition artists on the market. Albena started her career in Europe showing her artwork at Art Basel and creating several murals. She relentlessly searches for the perfect combination of form, color and texture. Albena travels actively around the world and searches for inspiration from nature and civilization. Her paintings exude elegance and timelessness.

CHRIS PASCHKE

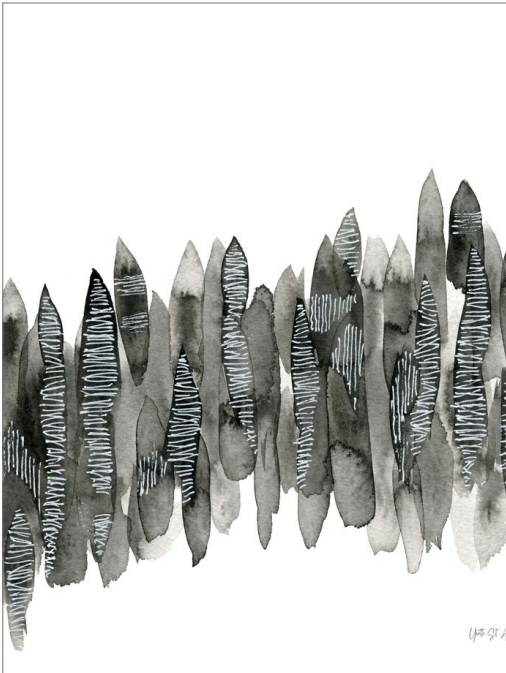


88082 WEBBED I

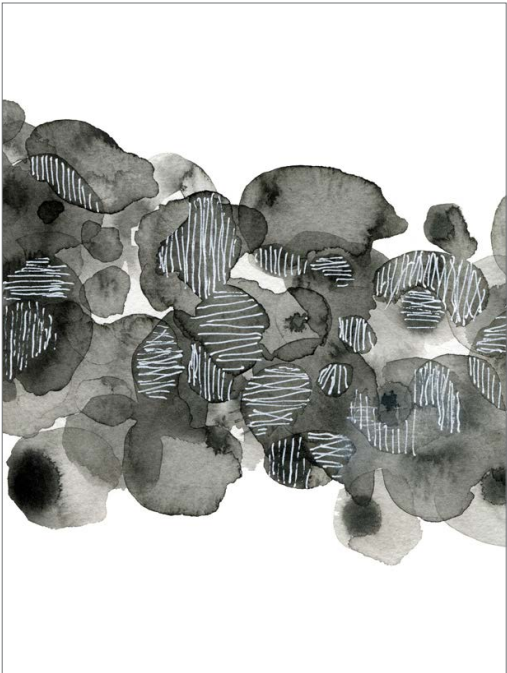


88083 WEBBED II

YVETTE ST. AMANT



88251 KINDLING I



88252 KINDLING II

YVETTE ST. AMANT

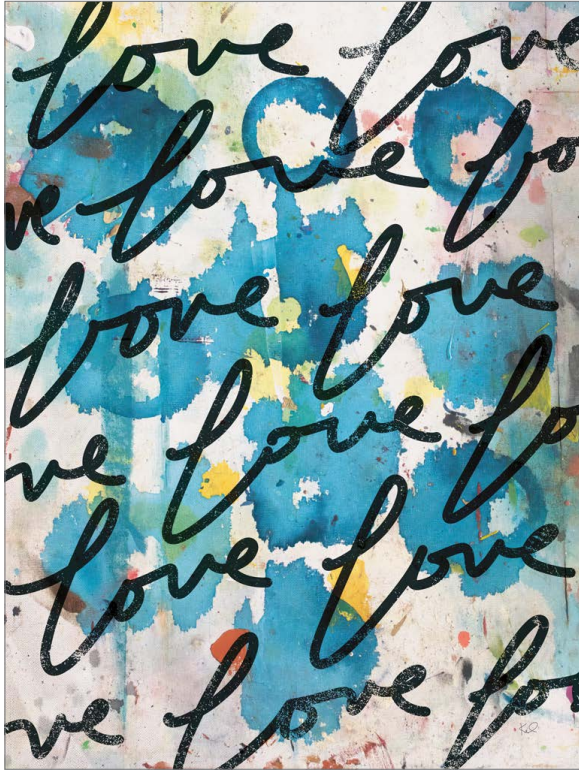


88249 GRADIENT MOVEMENT I

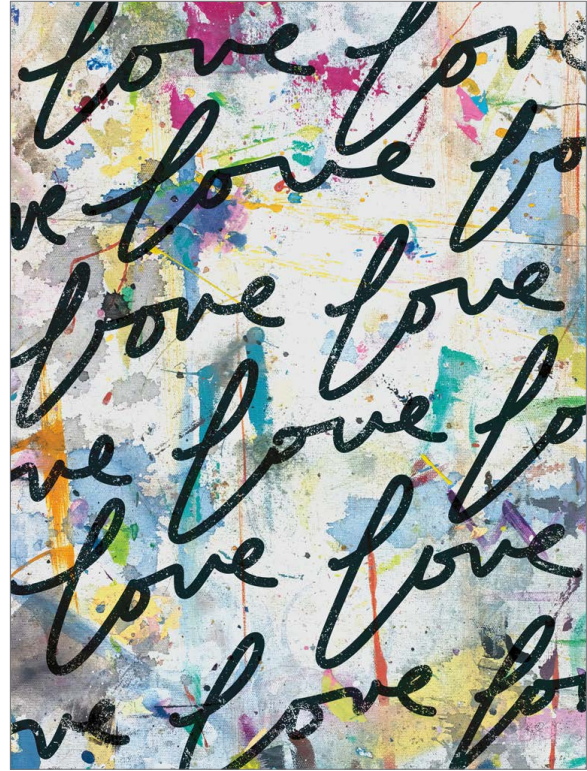


88250 GRADIENT MOVEMENT II

KENT YOUNGSTROM



89380 LOTS OF LOVE II



89379 LOTS OF LOVE I



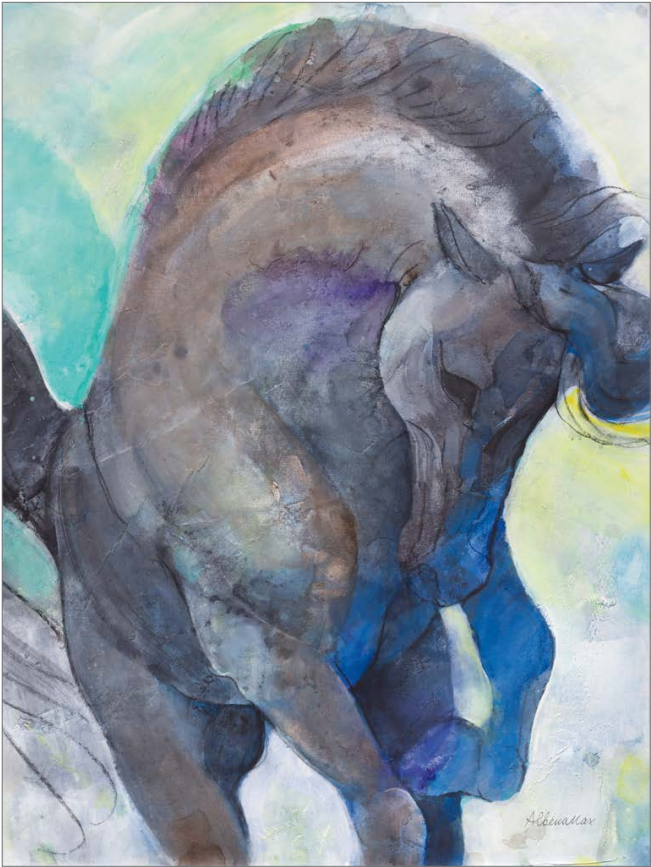
KENT
YOUNGSTROM

“As an artist I enjoy the struggle as much as the end product.” Kent Youngstrom is an artist with a beautifully varied background from interior design to graphics. His art is a journey combining a touch of faith, sentimental imagery and, every once and a while, a laugh, so that the viewer can experience the same emotional passage.

ALBENA HRISTOVA



89803 MAJESTIC VALOR



89802 ROYAL SPLENDOR

A



A



A: 89811 PULL | B: 89812 PUSH
JEANETTE VERTENTES

PROUD MEMBER OF

ART  COPYRIGHT  COALITION
PROTECTING ART *and* CREATIVITY