

# art DECOR

MAY 2024 | WALL DECOR




## NUESTRAS OBRAS Y CUADROS SON PERSONALIZADOS

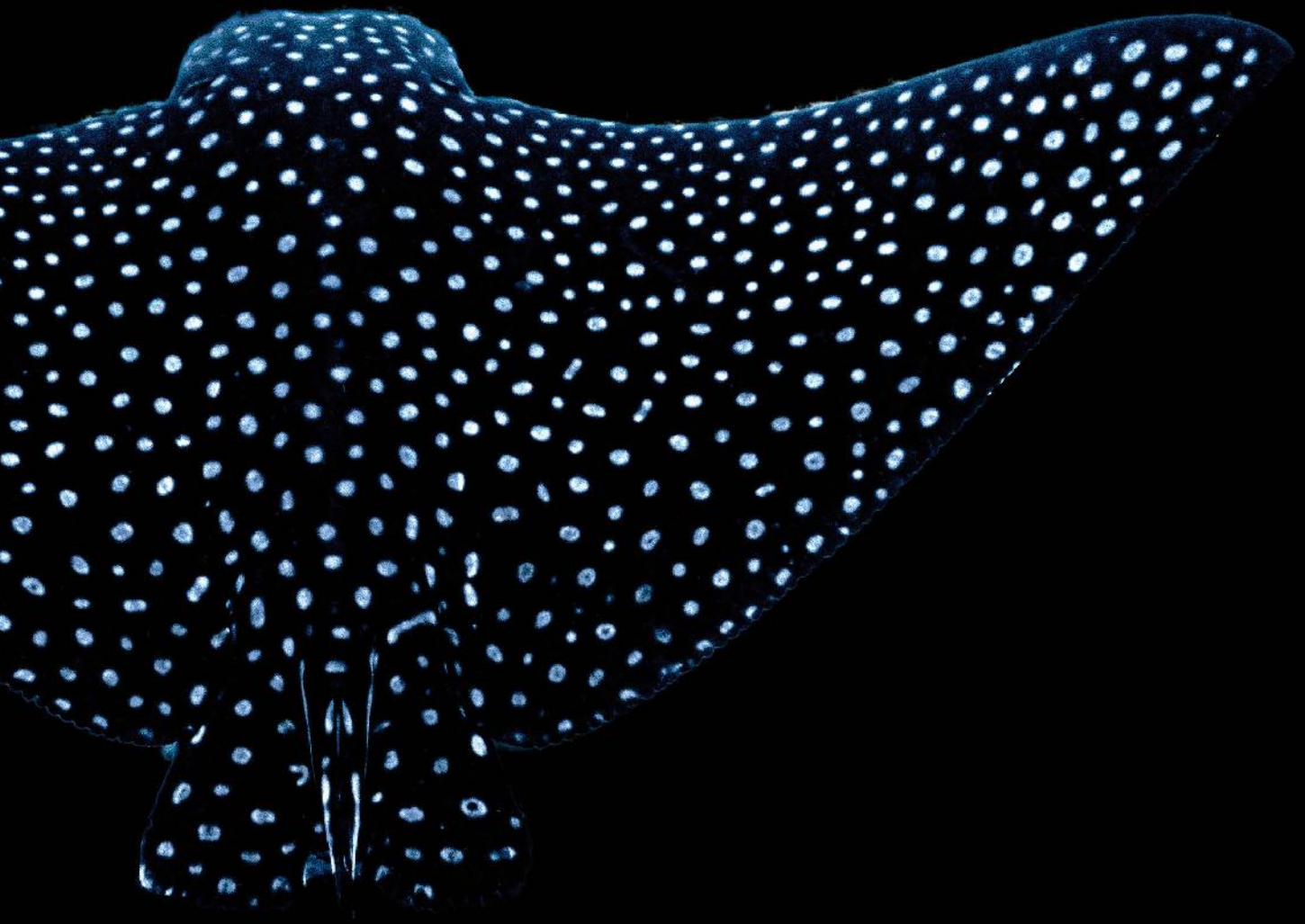
Todas las imágenes de este catálogo están disponibles para impresión en el tamaño que lo desees. Dependiendo del tipo de enmarcado que elijas, se pueden imprimir en litografía (papel) o Canvas (lienzo).

También las enmarcamos a tu gusto y te asesoramos en todo el proceso

Visítanos y contáctanos:

-  [www.facebook.com/artgallery.mexico](https://www.facebook.com/artgallery.mexico)
-  [www.instagram.com/artgallerymexico/](https://www.instagram.com/artgallerymexico/)
-  [www.pinterest.com/artgallerymex/](https://www.pinterest.com/artgallerymex/)
-  [www.twitter.com/artgallerymex](https://www.twitter.com/artgallerymex)

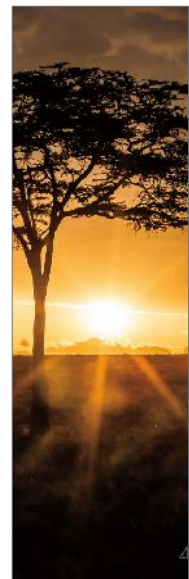






# pathfinder

*This trend is perfect for those who dream of adventure and long to bring a piece of the world into their living space. From the mysterious depths of underwater realms to sweeping landscapes and remote vistas, get ready to explore the beauty and diversity of our planet.*



- 91006 HAWAIIAN GLOW
- 90882 CLOSE UP
- 89477 HIGHLAND COW KING OF THE HILL
- 90884 ABOVE AND BELOW
- 90844 AFRICAN SUNRISE



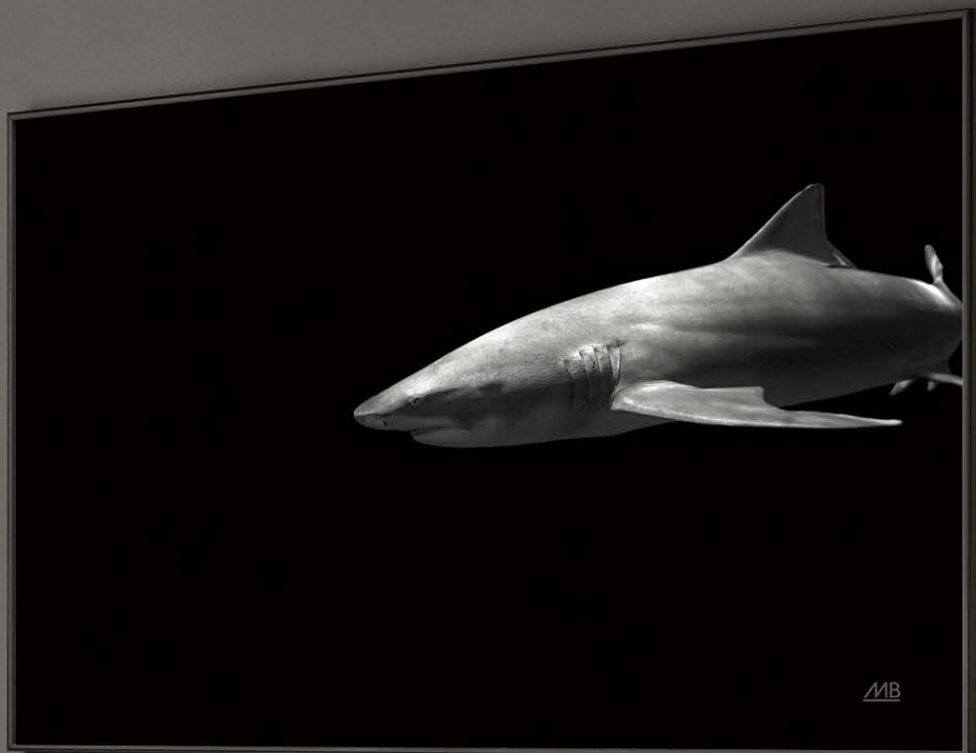
NEW ARTIST

*Max*  
BLAKESBERG  
STUDIOS

*Max Blakesberg, a South Florida-born photographer, captures the essence of the natural world with stunning clarity. His artistry is shaped by a family legacy in the creative industry and a lifelong passion for exploration. Max's unique blend of natural light and underwater photography has garnered accolades, including features in Rolling Stone and Discovery. Influenced by renowned artists like Ansel Adams and Chris Burkard, his portfolio is a testament to his deep connection with nature and his ability to convey its beauty and purity through his lens.*

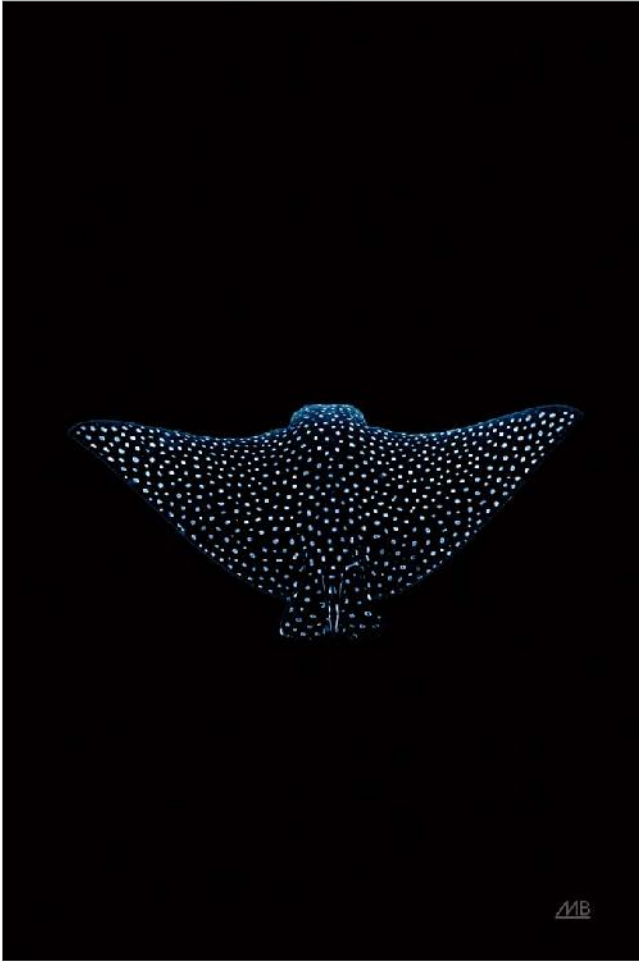


A





B



C



*I've been granted countless opportunities to live a life that straddles the lines between reality and dreams— from immortalizing the electric energy of music festivals for Rolling Stone, to locking eyes with great white sharks through my lens for the Discovery Channel*

A: 90848 ON THE HUNT  
B: 90982 EAGLE RAY DARK  
C: 90883 ABOVE THE ABYSS  
MAX BLAKESBERG STUDIOS





90885 BLOWING BUBBLES  
MAX BLAKESBERG STUDIOS



90882 CLOSE UP  
MAX BLAKESBERG STUDIOS

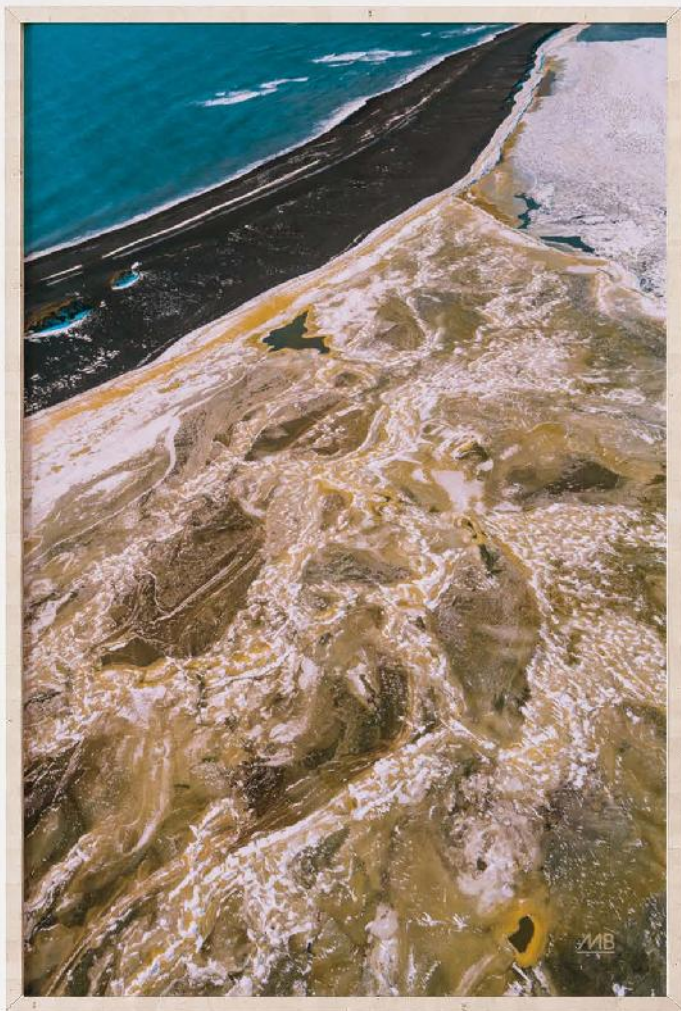


90847 HELLO SEA TURTLE  
MAX BLAKESBERG STUDIOS

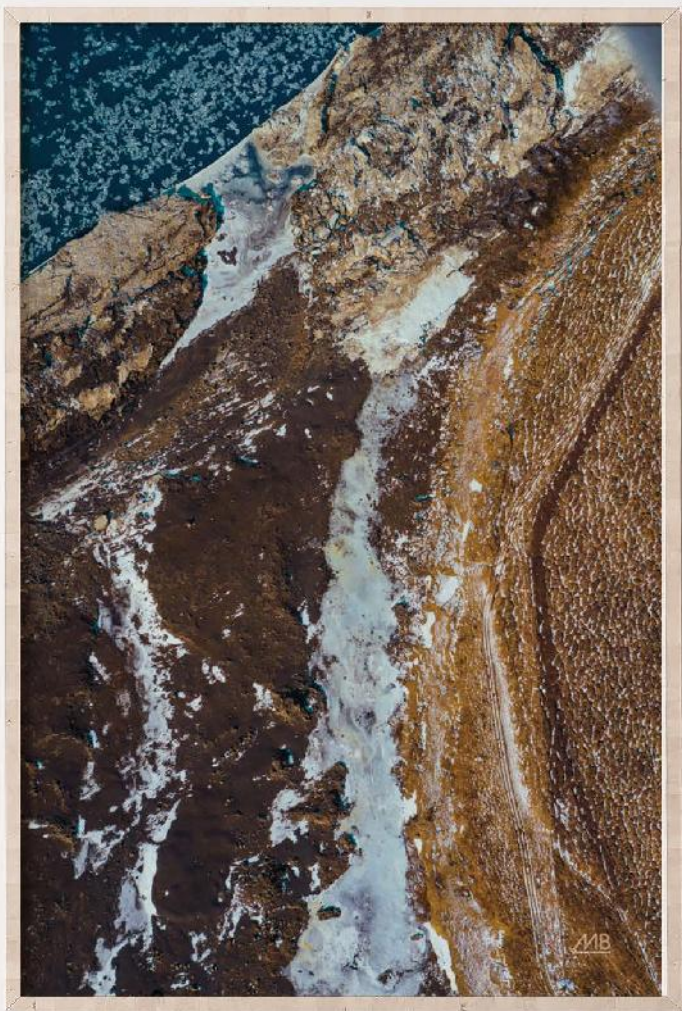


90884 ABOVE AND BELOW  
MAX BLAKESBERG STUDIOS

A



B



A: 90838 ICELAND FROM ABOVE I | B: 90839 ICELAND FROM ABOVE II  
 MAX BLAKESBERG STUDIOS

A



B



A: 90842 ROCKY SHORE HAWAII | B: 91006 HAWAIIAN GLOW  
MAX BLAKESBERG STUDIOS



A



*As I continue to progress in my career as a visual storyteller, my hope is to have the opportunity to work under the guidance of those that I have looked up to since the very beginning of my journey, allowing me to come full circle and contribute to the world of visual arts not only as an artist but as a lifelong student.*

B



A: 90840 ICELAND SHORES I  
B: 90837 ICELAND HIKE  
MAX BLAKESBERG STUDIOS

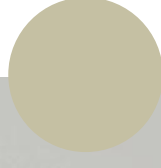
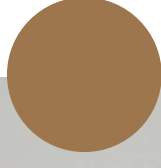
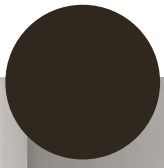
# earthbound

*Picture this: stunning landscapes and abstracts, all brushed in soothing earthy tones—think lush greens, deep rusts, and robust browns. It's the perfect palette for creating interiors that feel inviting and utterly peaceful.*



A: 89966 MCCORMICK RIDGE | B: 90534 A KENTUCKY WEEKEND II | C: 90540 COPPER CREEK  
HALEY KNIGHTEN



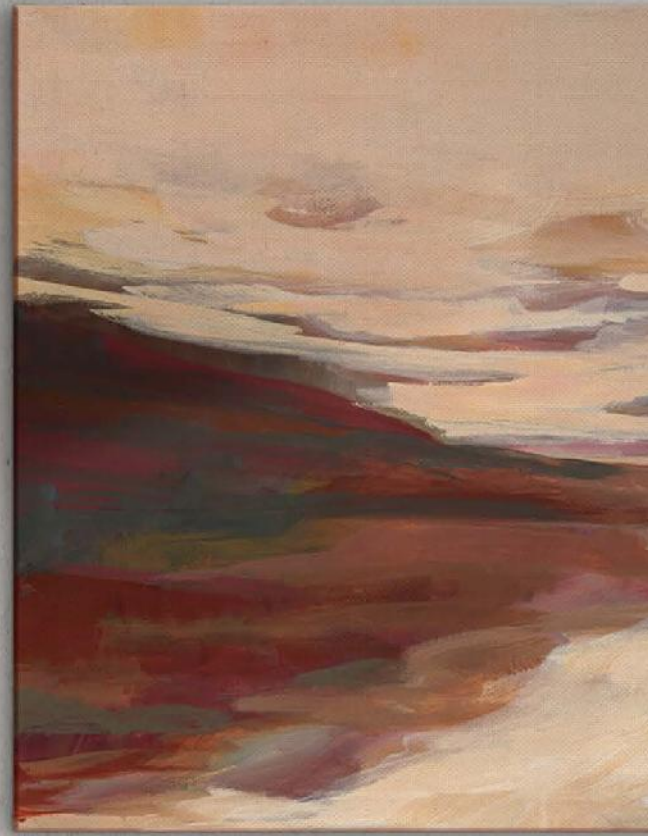


B



C





90132 CRIMSON CREEK  
HALEY KNIGHTEN





A



B



C





D



A: 90194 AMERICAN RUST | B: 89357 RARE EARTH  
PAMELA MUNGER

C: 88548 DREAMY SEASCAPE | D: 88549 DREAMY LANDSCAPE  
YVETTE ST. AMANT

A



B



C

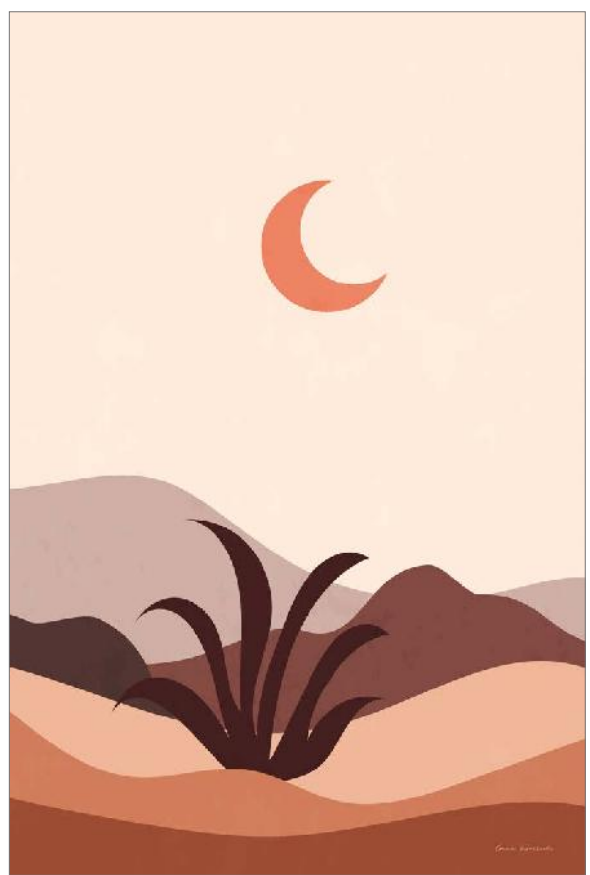


*Perfect for creating serene spaces that speak to contemporary tastes, this simplified illustrative collections transform traditional scenery into a fresh, on-trend and modern take on nature's timeless beauty*

D



E



- A: 90451 BOHO LANDSCAPE I
  - B: 90452 BOHO LANDSCAPE II
  - C: 90702 BOHO LANDSCAPE III
  - D: 90456 BOHO DESERT I
  - E: 90457 BOHO DESERT II
- OMAR ESCALANTE



# soft petals

*This trend brings the light and airy vibes of springtime right into our living spaces with soft and pretty floral art. We're talking about those soft muted tones of pink, yellows, and earthy greens that just make your heart sing. It's like having your own little garden party on your walls!*

A: 88225 GOLDEN BLOOMS II | B: 88224 GOLDEN BLOOMS I  
YVETTE ST. AMANT

C: 90014 FULL BLOOM IX | D: 90015 FULL BLOOM X  
ANNE TAVOLETTI



C



D



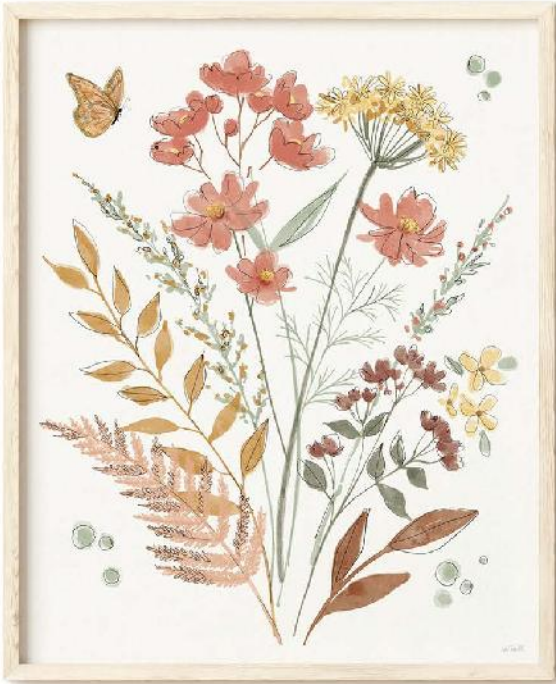
A



B



C



D



*Whether it's chilly outside or the sun's out, these pieces keep the spring spirit alive and kicking. So, why wait for the flowers to bloom outside when you can surround yourself with blooming beauty all year round?*

E



A: 88794 SPRING BOUQUET I | D: 88795 SPRING BOUQUET II | B: 90008 FULL BLOOM III | C: 90009 FULL BLOOM IV  
KATRINA PETE ANNE TAVOLETTI

E: 89488 PASTELS  
SHIRLEY NOVAK

# gourmet gallery

*From delectable sweets to savory meals, this collection is a feast for the eyes, rendered in lush, vivid colors that bring out the textures and tones of each dish.*

*Ready to dine in style?*

A

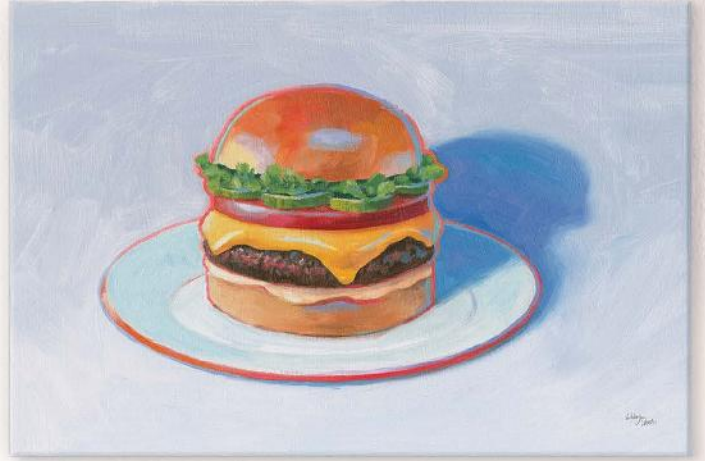


A: 90168 CHEESY | B: 90167 SOUP DU JOUR | C: 90651 BURGER  
WELLINGTON STUDIO

B



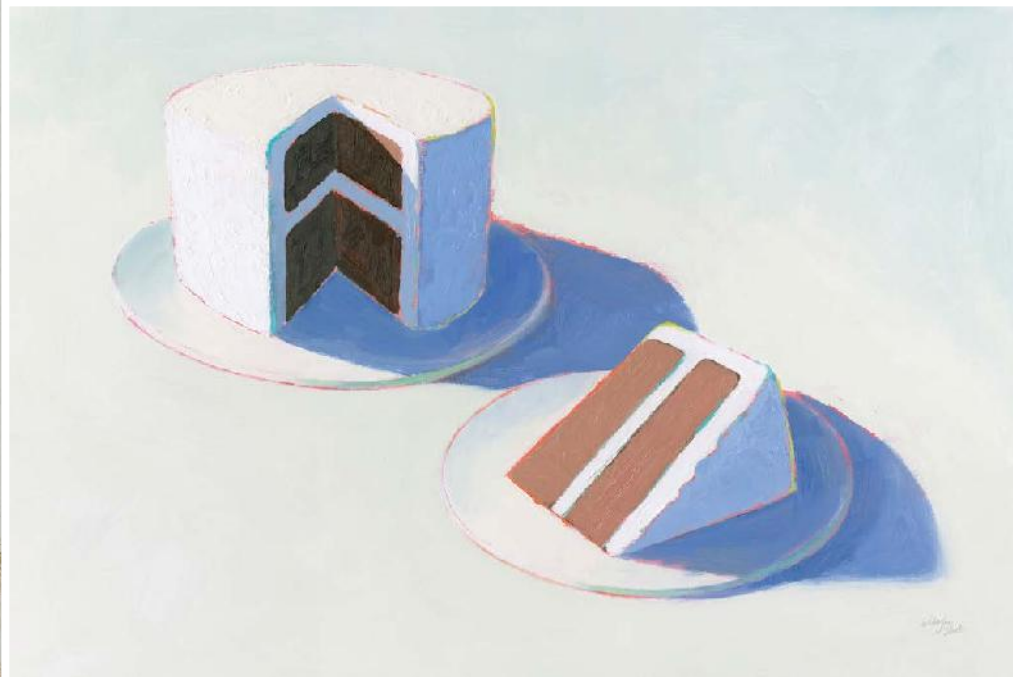
C



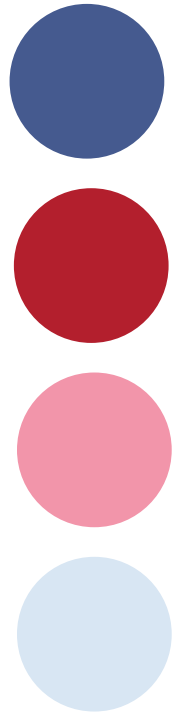
A



B



C



A: 90652 SUNDAE  
B: 90169 LAYER CAKE  
B: 90650 DOUGHNUTS  
WELLINGTON STUDIO

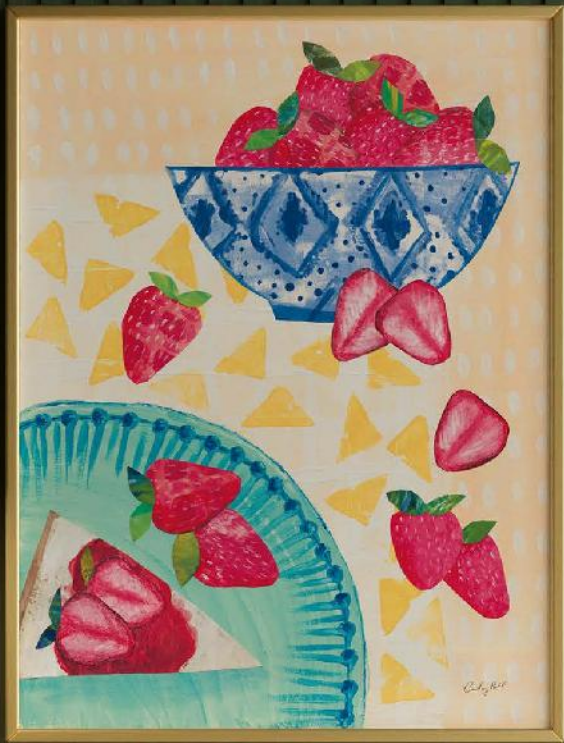
A



A: 89860 TABLESCAPE LEMONS | B: 89859 TABLESCAPE DESSERT | C: 89861 TABLESCAPE SUSHI  
COURTNEY PRAHL



B



C



A



B





# squeeze the day

*With artful nods to classic blue and white pottery, these pieces merge the zest of lemon groves with a whisper of vintage charm. The vibrant color palettes fused with these lively lemon motifs are sure to squeeze a splash of refined yet cheerful style into any home.*

A: 88190 BLUE LEAF LEMONS I | B: 88191 BLUE LEAF LEMONS II  
YVETTE ST. AMANT



*Lemons on Delft pottery? A nod to the days when citrus was the globe-trotter's fruit, a slice of the exotic right at home. This blue and white trend isn't just a classic—it's a story of wanderlust from a time when lemons were as posh as it got. They brought the world's splendor into the Dutch Golden Age home. Today, the look is trending again. Artists and designers are mixing that old-world luxe with our modern love for all things timeless.*



A: 88188 LEMON TREE IN CHINOISERIE I  
B: 88189 LEMON TREE IN CHINOISERIE II  
YVETTE ST. AMANT

C: 87855 ELEGANT FRUIT I  
D: 87856 ELEGANT FRUIT II  
MERCEDES LOPEZ CHARRO



A



B



A: 88612 LEMON BRANCHES I | B: 88613 LEMON BRANCHES II  
DANHUI NAI

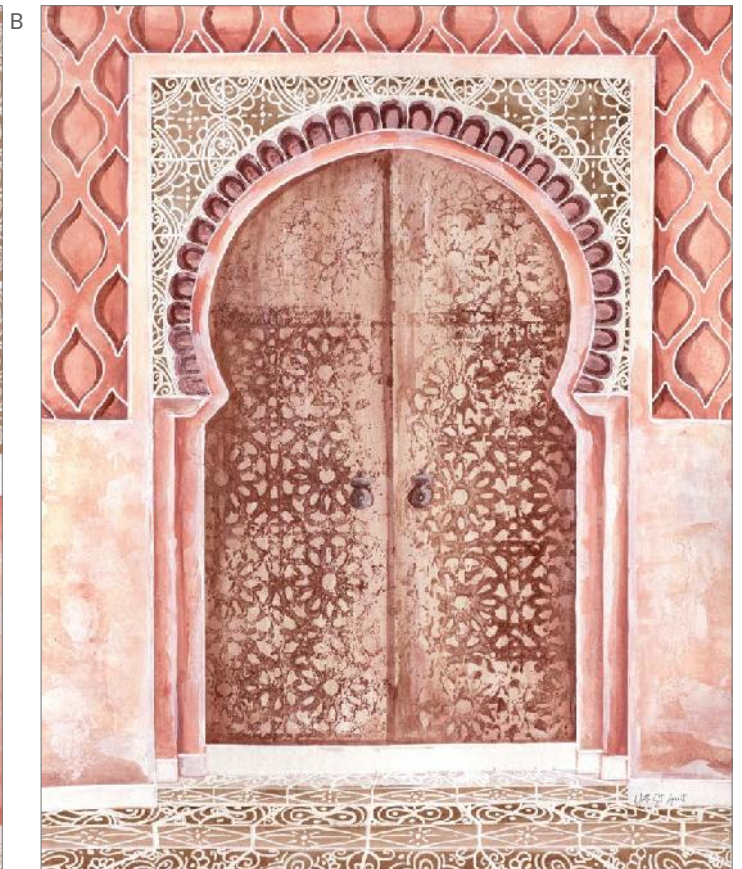
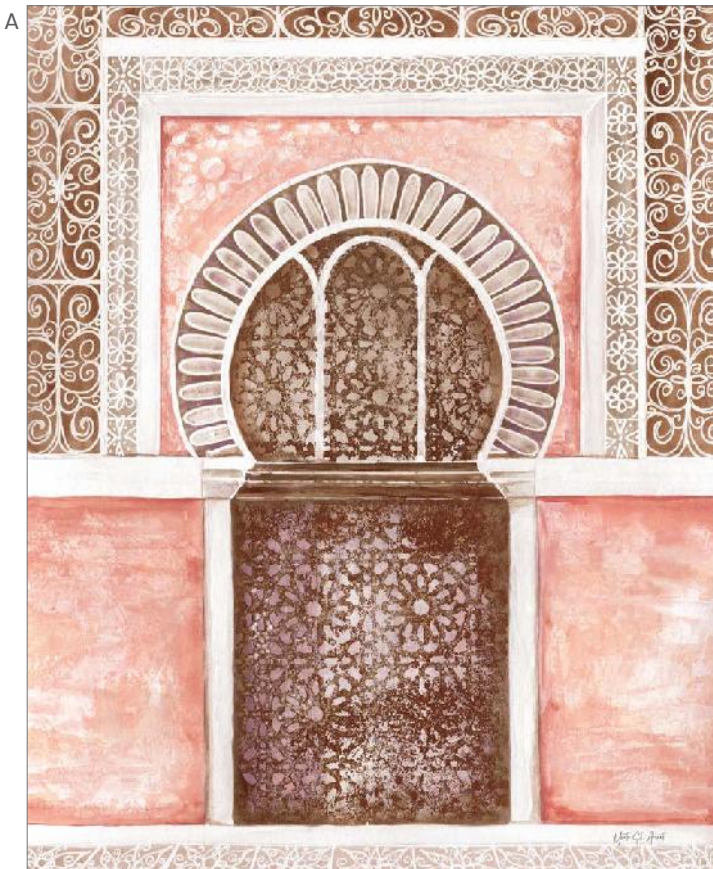
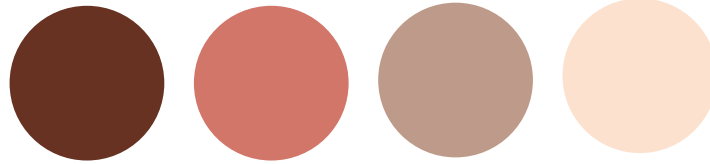
C: 89358 TWO LEMONS  
PAMELA MUNGER

C



# global shapes

*Our artists are celebrating the intricate beauty of Moroccan gates, the spiritual symmetry of mandalas, the ornate detail of tiles, and the timeless swirl of paisley. Rendered in muted pastels, these designs bring a whisper of global flair to any space, inviting a journey of the eyes and the imagination.*



A: 88246 MOROCCAN STREETS TILED ALCOVE | B: 88245 MOROCCAN STREETS TILED ENTRANCE  
C: 90987 SPIRAL MANDALA | D: 90986 DESERT MANDALA  
YVETTE ST. AMANT





C



D



A



B



C



D





E



A: 38674 JAIPUR V | B: 38677 JAIPUR VIII  
C: 38676 JAIPUR VII | D: 38675 JAIPUR VI  
DANHUI NAI

E: 88139 WANDERER II PINK  
PIPER RHUE

# explore more art

YVETTE ST. AMANT



88806 PAINTERLY FLORALS IN VASE I



88807 PAINTERLY FLORALS IN VASE II



90393 DARK GARDEN  
DANHUI NAI

JEANETTE VERTENTES



89209 AUGUST BLOOMS

JEANETTE VERTENTES



89656 AMOUR



89211 NEW BEGINNINGS

JEANETTE VERTENTES



89210 COURTESY



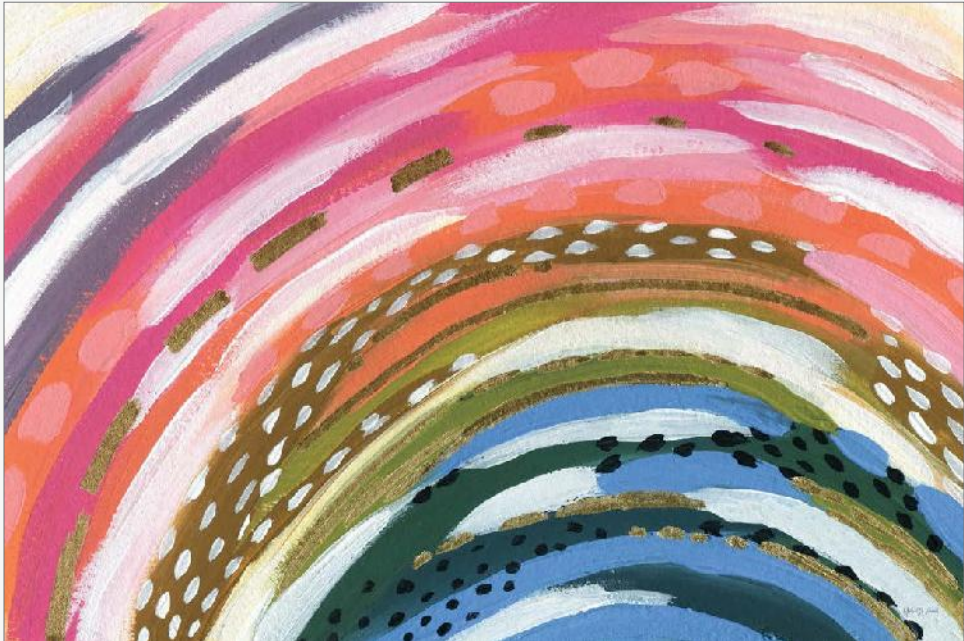
JEANETTE  
VERTENTES

*Jeanette Vertentes is a contemporary painter known for colorful paintings filled with vibrant spirit. Living in Connecticut, close to the sea, her vivid creations are brought to life with contrasting and harmonious colors, movement and bold compositions.*

YVETTE ST. AMANT



88801 HAPPY DAYS



88802 RAINBOW SPLASH



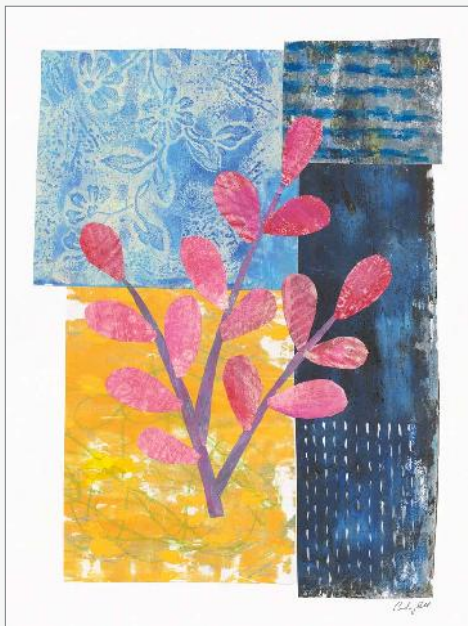
COURTNEY PRAHL



90310 PATCHWORK PLANTS I



90311 PATCHWORK PLANTS II

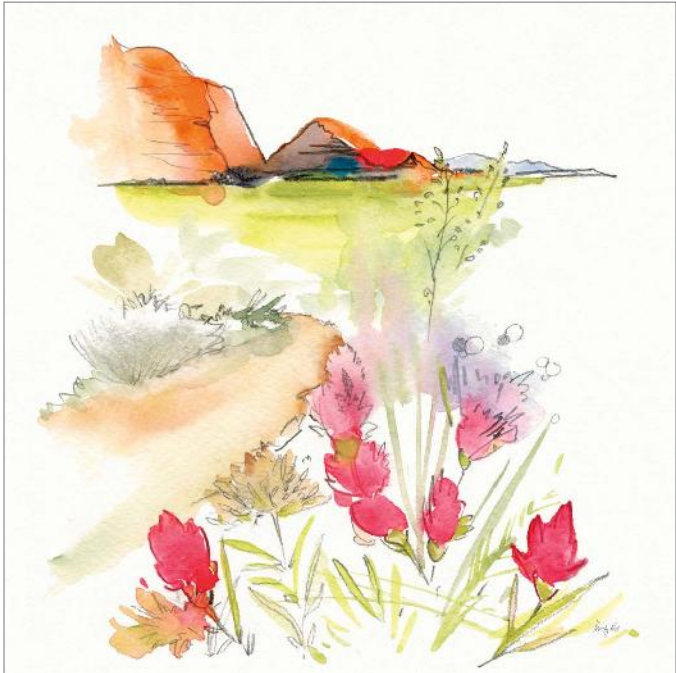


90312 PATCHWORK PLANTS III



90313 PATCHWORK PLANTS IV

KRISTY RICE



90384 DESERT BLOOMING

KRISTY RICE



90386 LOOKOUT POINT



90385 VERDANT VALLEY

SILVIA VASSILEVA



90321 CALIFORNIA BLOOM

SILVIA VASSILEVA



90330 WILDFLOWER BLOOM II



90329 WILDFLOWER BLOOM I

NATHAN LARSON



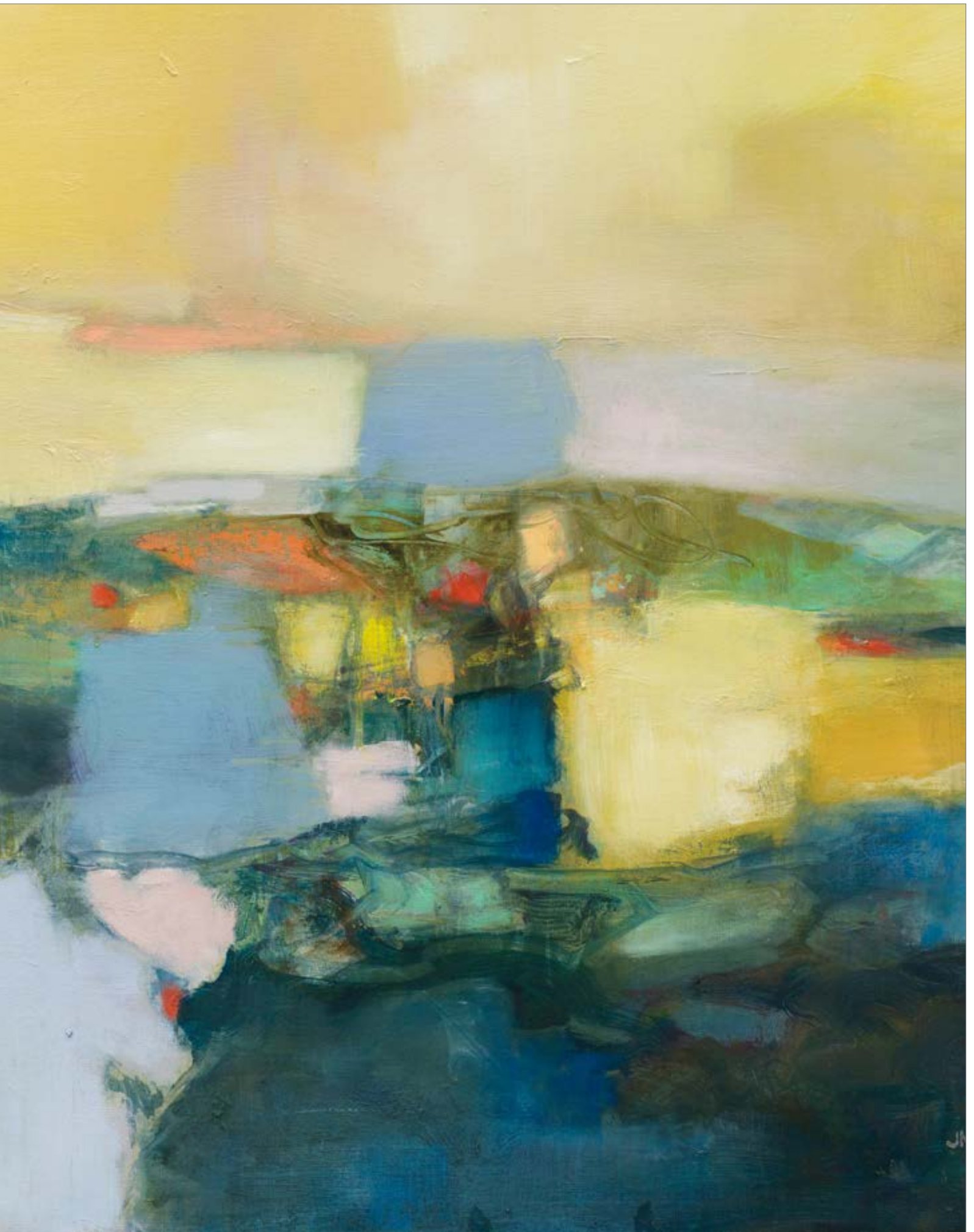
90481 COMMON FIDDLENECK I



90482 COMMON FIDDLENECK II

90244 VOYAGE | JULIA PURINTON





SILVIA VASSILEVA



90253 SUMMER SOLSTICE



90250 SUNSHINE

SARAH ADAMS



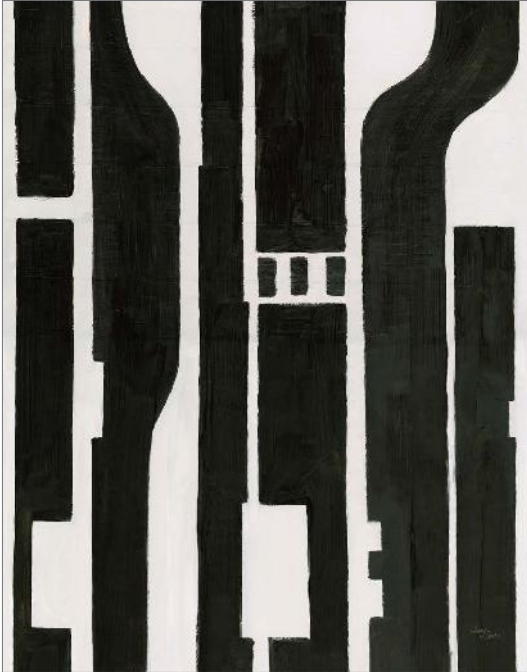
89947 JUST PEACHY



SARAH  
ADAMS

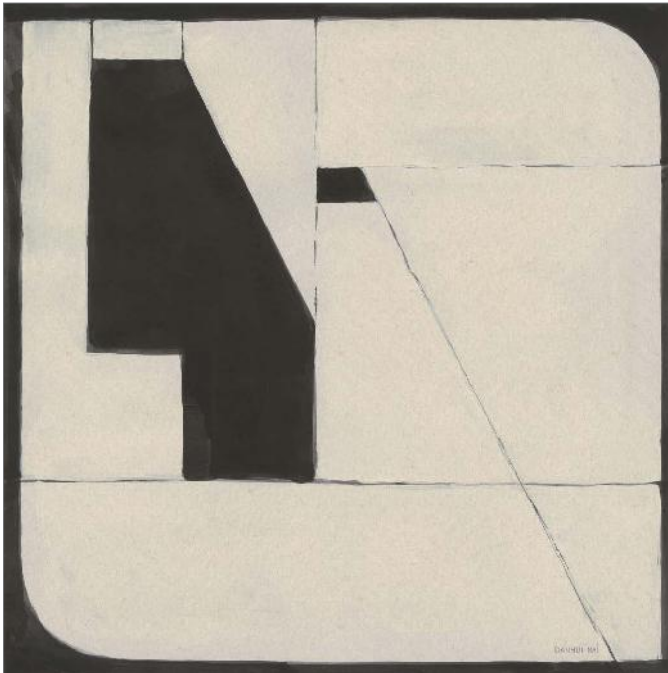
*Sarah Adams has been creating art and design since she began drawing cartoons as a child in South Africa. Sarah received her BFA in Graphic Design and Photography from Endicott College. Sarah's designs often begin with objects and backgrounds painted in black ink on wood, textured paper or canvas. She then adds design elements and her signature bold colors. Now living with her husband and son in Vermont, Sarah draws inspiration from her childhood in South Africa, sports, nature and her energetic family.*

WELLINGTON STUDIO



87330 CIRCUIT

DANHUI NAI



86781 SOMEDAY SOON TAN

87307 GOLD RUSH  
WELLINGTON STUDIO



WELLINGTON  
STUDIO

*Tucked away on Canada's West Coast, Wellington Studio is more than just an art studio, it's a place buzzing with creativity. Known for its eclectic mix of art and techniques, Wellington Studio produces a variety of collections in today's most sought-after styles.*

*The studio isn't just about making art; it's about creating collections that make your space feel like you. Whether it's a tranquil nature scene that brings a touch of calm or a bold abstract that makes a statement, their art collections are designed to bring art home.*

*With a deep love for all things creative and colorful, Wellington is a place where different art forms mingle, where new ideas take shape, and where creativity is king; it's where art comes to life, constantly evolving and inspiring.*





HALEY KNIGHTEN



90490 TIME LAPSE II



90539 SLOW MOTION

COURTNEY PRAHL



89857 STORMY SEAS

JULIA PURINTON



87667 SEASIDE IMPRESSIONS

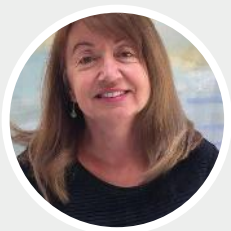


90394 SHIMMERING SEA BRIGHT

SILVIA VASSILEVA



90251 BY THE BEACH



SILVIA  
VASSILEVA

*Silvia Vassileva pursued her love of art at the Academy of Fine Art in Bulgaria, where she earned both her bachelors and masters degrees. She spent six years painting and exhibiting her work in Japan before moving to the U.S. Silvia describes her style as very free and bold. She makes her paintings come alive by using contrast and unusual color palettes. Silvia's home studio, which she designed herself, is bright, contemporary and minimalist.*

SILVIA VASSILEVA



90324 HAZE

SILVIA VASSILEVA



90322 MORNING AT STONE BEACH

SILVIA VASSILEVA



90323 ISLANDS

SILVIA VASSILEVA



90252 WAVES AND CLOUDS



90188 OCEAN BEACH SUNSET



JEANETTE VERTENTES



89497 OLD FASHIONED

WELLINGTON STUDIO



90246 MOSAIC BIRDS I



90247 MOSAIC BIRDS II



90248 MOSAIC BIRDS III



90249 MOSAIC BIRDS IV

SILVIA VASSILEVA



90320 POPPIES IN BLUE II



89315 POPPIES IN BLUE

A



B



A: 90446 WATERWOOD  
B: 90477 ANCIENT REDWOOD FOREST  
NATHAN LARSON



NATHAN  
LARSON

*Nathan Larson is a Vermont-based photographer and chocolate consumer. For over 20 years he has created work that ranges from fine art photography to landscapes, abstracts, wildlife, and mixed media. He enjoys collaborating with clients to produce the perfect images for their projects and believes the world is a better place with more art in it. "I still use my first camera, though I have added some tools along the way, and I'm still seeking new ways to share visual stories with my audience."*

NATHAN LARSON



90442 KING OF THE MOUNTAIN



90436 ON GUARD



90437 AMERICAN BORDERLANDS



90440 SONORAN WONDERLAND BW

NATHAN LARSON



87941 BISON PAIR

NATHAN LARSON

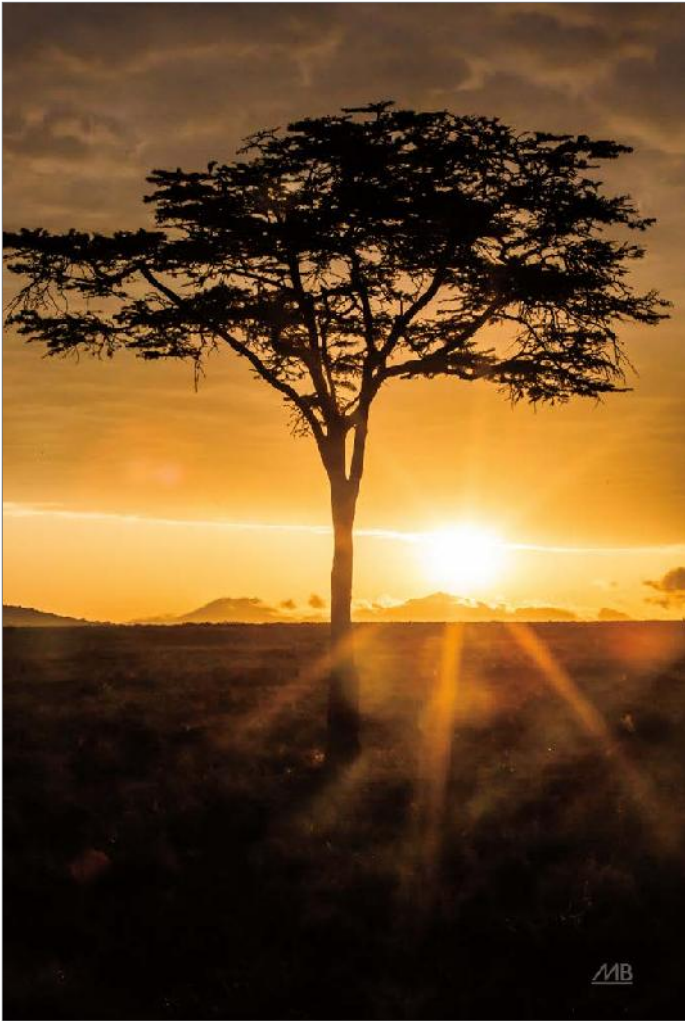


90435 THE CLIMB



90479 ARIZONA DREAMS

MAX BLAKESBERG STUDIOS



90844 AFRICAN SUNRISE



90887 AFTER LUNCH



90833 LION





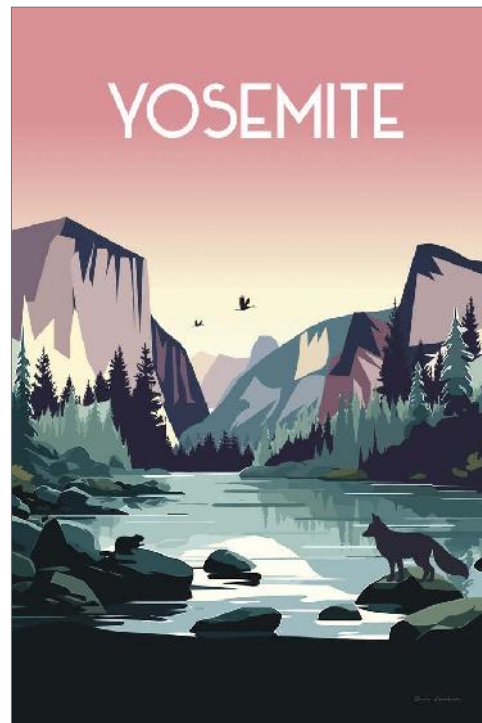
A: 90453 BOHO VALLEY I  
 B: 90454 BOHO VALLEY II  
 B: 90455 BOHO VALLEY III  
 OMAR ESCALANTE



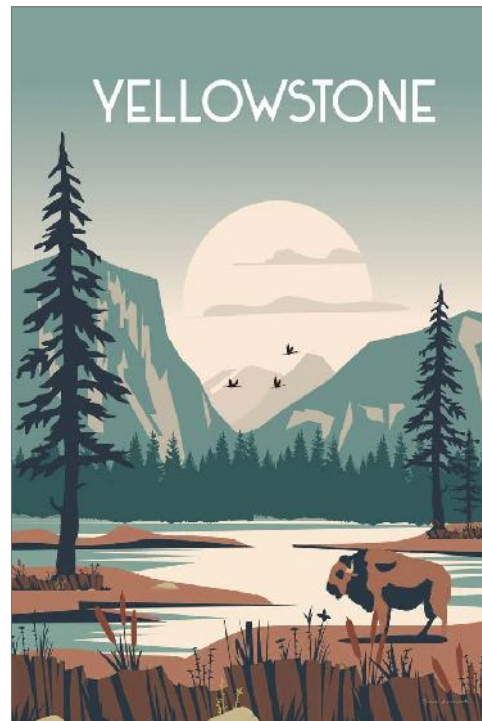
OMAR  
 ESCALANTE

*Omar Escalante's art style is influenced by pop art and Art Deco style. "I like to tell stories through my illustrations," he says "Especially when I travel, I like to look for the feeling of places and show it through my work." When he began to create artwork based on vintage travel posters, the theme became his passion. In 2017 he won a travel poster contest promoting travel to Finland, where he lives with family. Omar grew up in Guatemala and has lived in Finland since 2007. His multicultural family (where five different languages might be spoken on any given day) also inspires and influences him in making his art.*

OMAR ESCALANTE



90449 YOSEMITE



90450 YELLOWSTONE



90141 DOWN ON THE FARM I



90142 DOWN ON THE FARM II



90143 DOWN ON THE FARM III



90144 DOWN ON THE FARM IV

JULIA PURINTON



86691 AMERICANA BARN

JULIA PURINTON



90243 SUN GRAZING

DANHUI NAI



90238 VALLEY RETREAT

YVETTE ST. AMANT



88522 FLOWERS ALONG THE PATH

HALEY KNIGHTEN



90493 LILY PAD LAGOON I

JULIA PURINTON



86690 COUNTRY VIEW



90135 CAMP  
HALEY KNIGHTEN

PROUD MEMBER OF

ART OPYRIGHT OALITION  
PROTECTING ART *and* CREATIVITY